

# MIC7000 Illuminator

## MIC-ILx-100



**BOSCH**

### Quick Installation Guide

english

deutsch

français

中国语文 CHS

español

dansk

suomi

italiano

日本語

nederlands

norsk

polski

portuguese

русский

svensk



english	Table of contents	5
deutsch	Inhaltsverzeichnis	16
français	Table des matières	27
中国语文 CHS	目录	38
español	Tabla de contenidos	49
dansk	Indholdsfortegnelse	60
suomi	Sisällysluettelo	71
italiano	Sommario	82
日本語	目次	93
nederlands	Inhoudsopgave	104
norsk	Innholdsfortegnelse	115

polaki	Spis treŃci	126
portuguese	Índice	137
русский	Содержание	148
svensk	Innehållsförteckning	159

# 1 Install the MIC7000 Illuminator

## Parts List

1	One (1) MIC Illuminator accessory
1	One (1) spanner tool [to remove the access plug from the camera head]
3	Three (3) M4x10 socket head Torx screws
1	One (1) Quick Installation Guide

## Additional Tools Required

1	1/4 in. drive wrench to use with the spanner tool
1	Torx driver, T20, for M4 Torx screws
1	Phillips-head screwdriver, #2, to remove factory-installed plastic screws from the camera head



### Warning!

IR emitted from this product.

Meets IEC 62471, Risk Group 1.

---

**Notice!**

This product has been tested according to standard IEC62471:2006 “Photobiological safety of lamps and lamp systems”. The product emissions exceed the EXEMPT Group limit for both Retinal Blue Light and Cornea/Lens infrared hazard as defined by IEC 62471:2006. The product was found to meet the Risk Group 1 exposure limits for IR and White LEDs.

---

Refer to the MIC7000 Operation Manual for complete information on illumination safety.

---

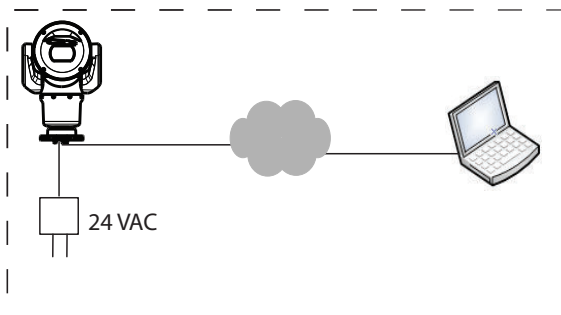
**Notice!**

If the MIC camera will have both illuminator and sunshield accessories, install the illuminator first. Extreme low temperature MIC7000 models do not support the illuminator.

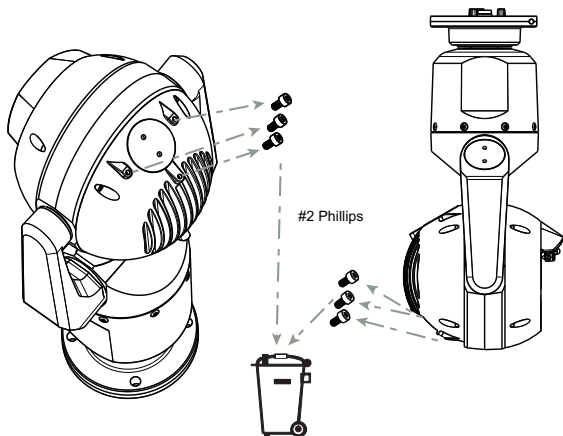
---

1. Mount the camera or stand it temporarily in the packaging foam on a stable surface before proceeding. (Refer to the Operation Manual.)

**Note:** If the camera will be mounted inverted, you must rotate the tilt head before attaching the illuminator. Apply power and connect to your network as illustrated in the figure below.

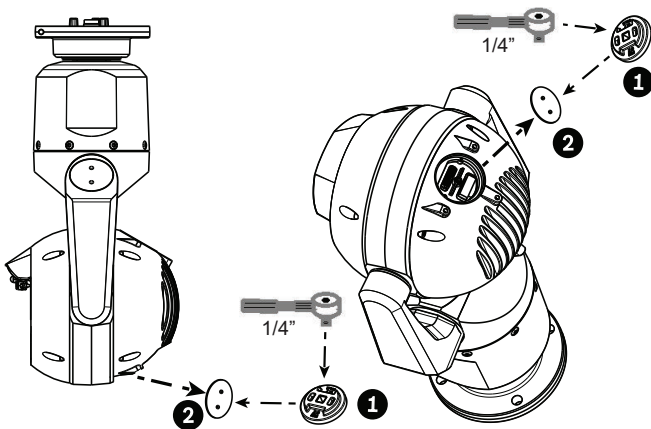


From the web browser, access the camera's Settings page. Select **Advanced > Camera > Installer Menu > Orientation**, and then select "Inverted". Click **Set** to confirm the selection. The camera head will rotate automatically into inverted position (180°). Regardless of mounting orientation, the visor should always be above the camera window.



2. Remove and discard the three (3) plastic screws **surrounding the appropriate access port where the illuminator will be installed.**



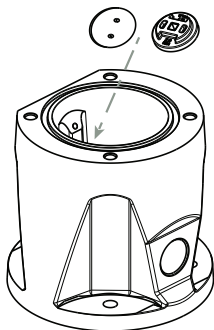


3. Remove the appropriate access plug from the camera head, using a 1/4 in. drive wrench (not supplied) with the spanner tool (supplied). For upright cameras, remove the plug near the visor. For inverted cameras, remove the plug farther away from the visor.

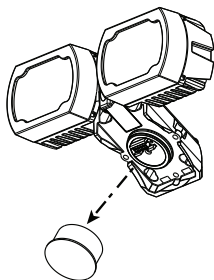
**Notice!**

Risk of damage to camera!

Do not allow water or dirt to enter the open connector port.



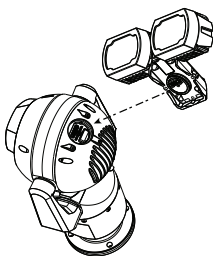
Bosch suggests storing the access plug and spanner tool inside the DCA mount (or wall mount accessory) in case it becomes necessary to remove the illuminator.



4. Remove the plastic cap from the illuminator accessory. Discard.

**Notice!**

Do not disturb the O-ring as you slide off the cap.

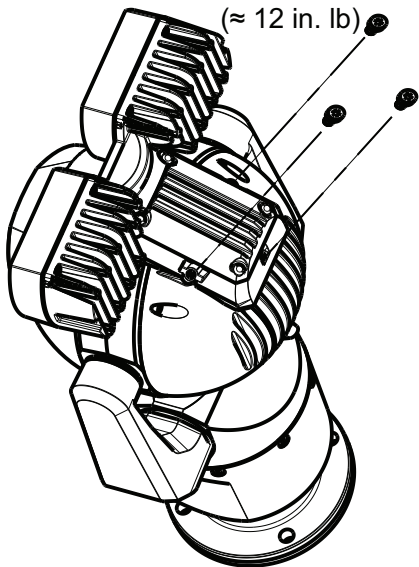


5. Align the illuminator over the access port and carefully push into position on the camera head.

# T20 Torx

1.4 N m

( $\approx$  12 in. lb)



6. Partially engage the threads of all three (3) screws.  
Do not tighten any one screw completely at this point.

**Notice!**

If you are also planning to install the MIC sunshield, insert only the rear center screw to hold the illuminator accessory in position until you install the sunshield.

---

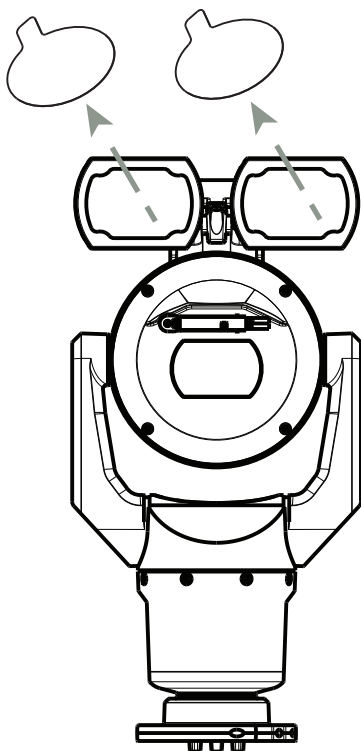
Tighten the screw on one side by two (2) turns. Tighten the screw on the other side by two (2) turns. Tighten the center screw by two (2) turns. Repeat until all screws are tight.

---

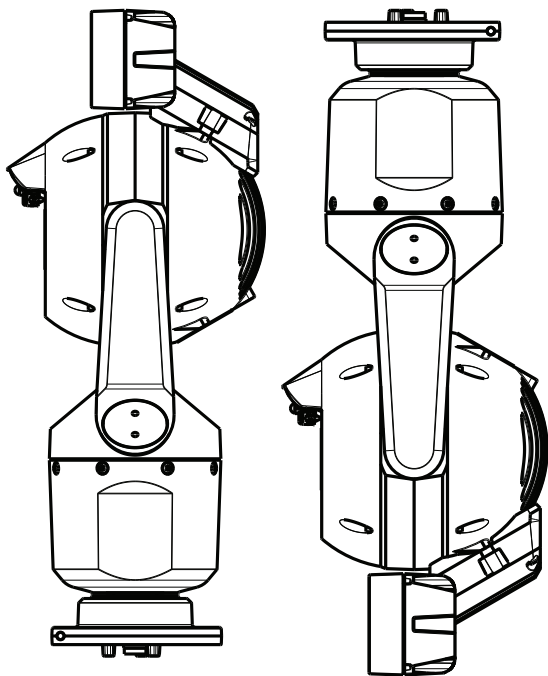
**Warning!**

Total engagement is not complete until you tighten all three (3) screws.

---



7. Remove the translucent film.



8. Installation of the illuminator is complete.