

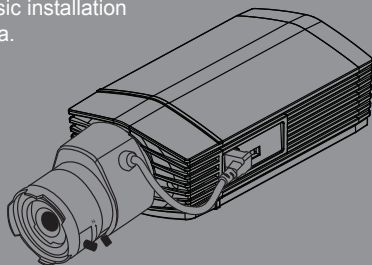


Quick Installation Guide

HD Day & Night Network Camera

This document will guide you through the basic installation process for your new D-Link Network Camera.

DCS-3112



Documentation also available on
CD and via the D-Link Website

DCS-3112 Quick Install Guide

This installation guide provides basic instructions for installing the DCS-3112 Network Camera on your network. For additional information about how to use the camera, please see the User's Manual which is available on the CD include in this package or from the D-Link support website.

Installation Steps

1. Verify the package contents against the list below.
2. Hardware Overview
3. Hardware Installation
4. Configuration with Wizard
5. Adjust the Zoom/Focus

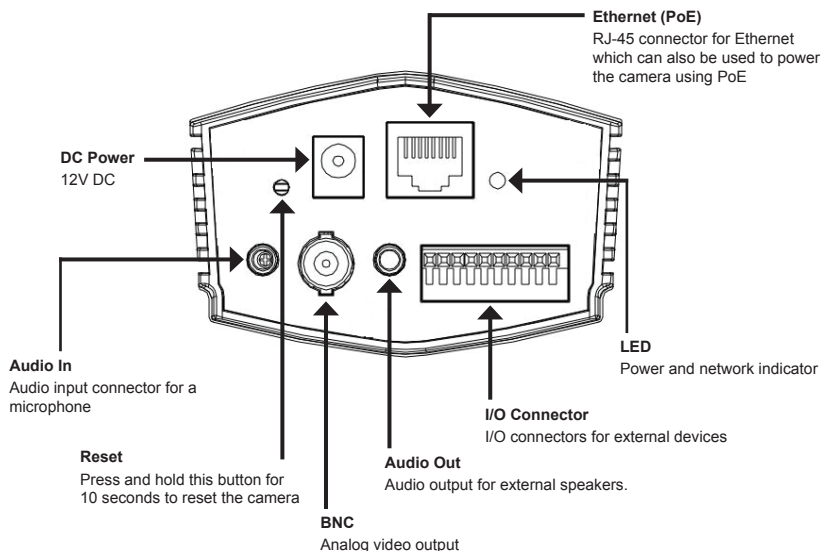
1. Package Contents

- DCS-3112 Network Camera
- Camera Stand
- Manual and Software on CD-ROM
- CAT5 Ethernet Cable
- Power Adapter
- Quick Install Guide
- C-CS Mount Adapter (5mm Ring)

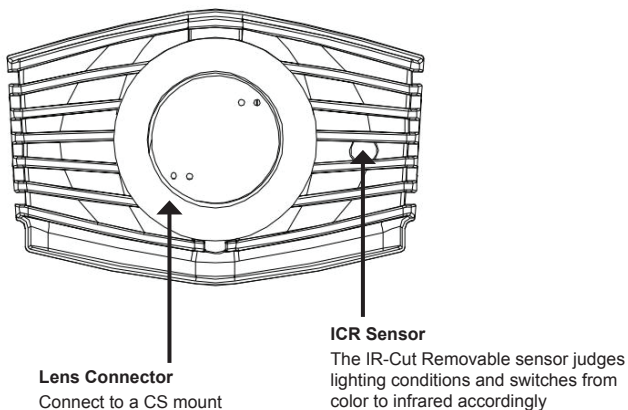
If any of the above items are missing, please contact your reseller.

2. Hardware Overview

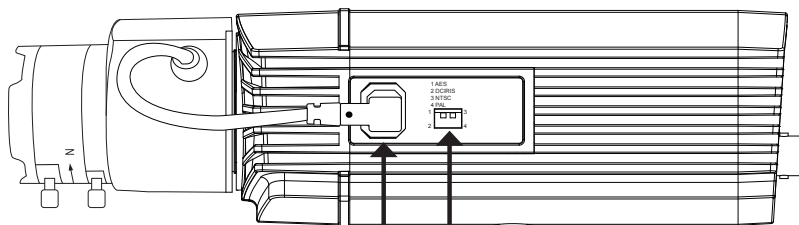
Rear Panel



Front Panel



Right Panel

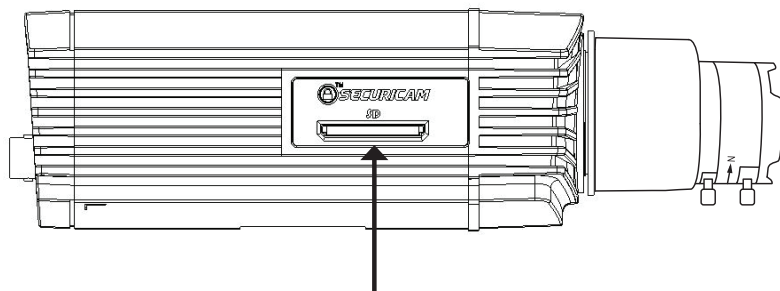


DC-Iris Connector
Connector for DC auto iris lens

DIP Switch
Toggles between several regional formats.

1 3	1. AES: Auto Electric Shutter
	2. DC IRIS: Toggle auto iris (DC drive)
	3. NTSC: TV output signal selector
2 4	4. PAL: TV output signal selector

Left Panel

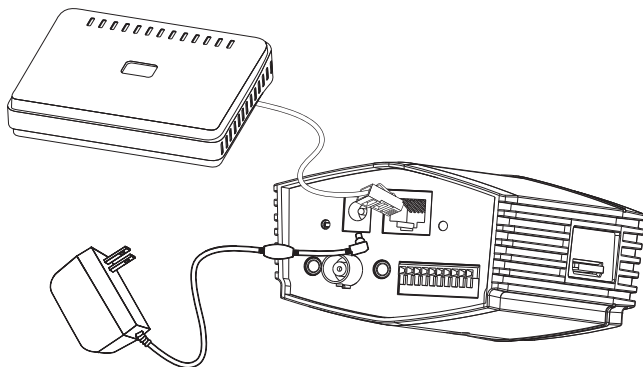


SD Card Slot
Local SD card for storing recorded images and video

3. Hardware Installation

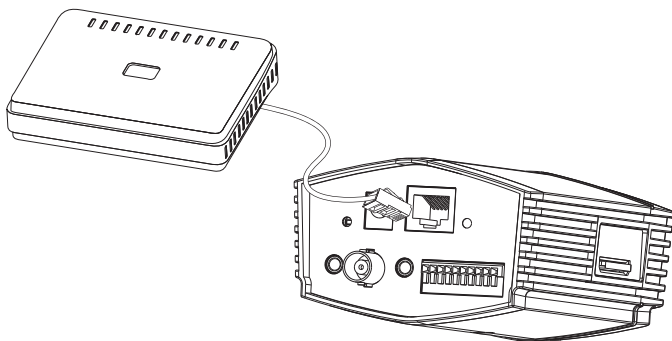
Basic Connection (without PoE)

Connect the camera to your switch or router via Ethernet cable.
Connect the supplied power cable from the camera to a power outlet.



Connection Using a PoE Switch

If using a PoE switch or router, connect the network camera via Ethernet cable.
PoE will transmit both power and data over a single cable.



Note: Once power has been established, the LED will turn red. When the device has obtained an IP address and is accessible, the LED will turn green.

4. Configuration with Wizard

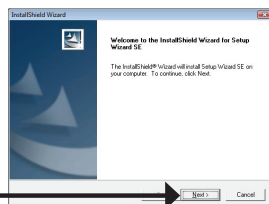
Insert the DCS-3112 CD into your computer's CD-ROM drive to begin the installation. If the Autorun function on your computer is disabled, or if the D-Link Launcher fails to start automatically, click **Start > Run**. Type **D:\autorun.exe**, where D: represents the drive letter of your CD-ROM drive.

Click **Installation Wizard** to begin the installation.

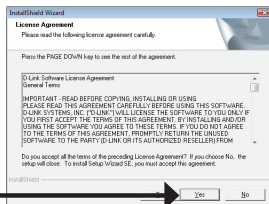


After clicking Setup Wizard, the following window will open.

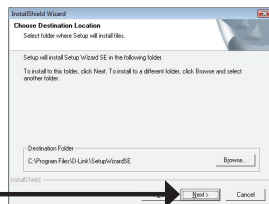
Click **Next** to continue.



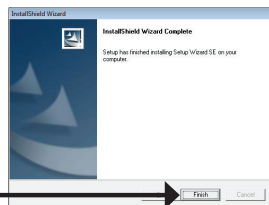
Click **Yes** to accept the License Agreement.



To start the installation process, click **Next**.



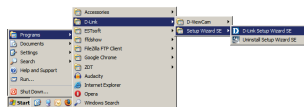
Note: The installation may take several minutes to finish.



Click **Finish** to complete the installation.

Click on the **D-Link Setup Wizard SE** icon that was created in your Windows Start menu.

Start > D-Link > Setup Wizard SE



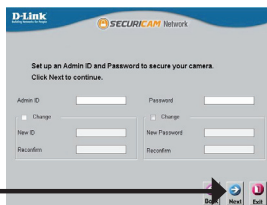
The Setup Wizard will appear and display the MAC address and IP address of your camera(s). If you have a DHCP server on your network, a valid IP Address will be displayed. If your network does not use a DHCP server, the network camera's default static IP **192.168.0.20** will be displayed.

Click the **Wizard** button to continue.



Enter the Admin ID and password. When logging in for the first time, the default Admin ID is **admin** with the password left blank.

Click **Next**, to proceed to the next page.

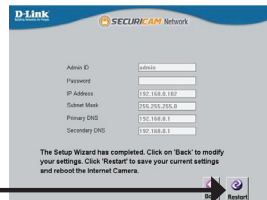


Select DHCP if your camera obtains an IP address automatically when it boots up. Select static IP if the camera will use the same IP address each time it is started.

Click **Next**, to proceed to the next page.



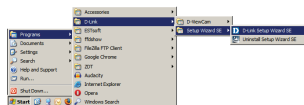
Take a moment to confirm your settings and click **Restart**.



Viewing Camera via Web Browser

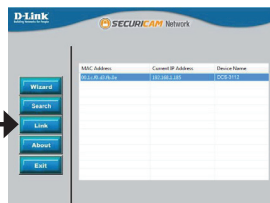
Click on the **D-Link Setup Wizard SE** icon that was created in your Windows Start menu.

Start > D-Link > Setup Wizard SE

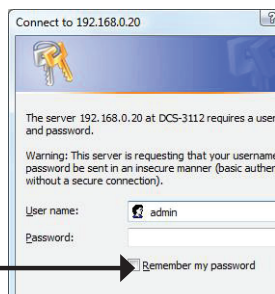


Select the camera and click the button labeled **"Link"** to access the web configuration.

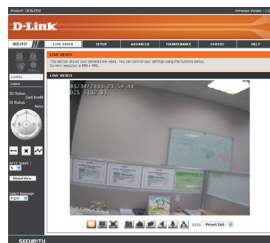
The Setup Wizard will automatically open your web browser to the IP address of the camera.



Enter **admin** as the default username and leave the password blank. Click **OK** to continue.



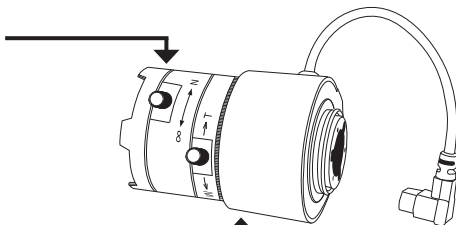
This section shows your camera's live video. You can select your video profile and view or operate the camera. For additional information about web configuration, please refer to the user manual included on the CD-ROM or the D-Link website.



5. Adjust the Zoom/Focus

Adjust Focus

Unscrew the focus controller to loosen it. Adjust the focal range by moving the controller to the left or right until the image is clear. Tighten the focus controller once completed.



Adjust Zoom Ratio

Unscrew the focus controller to loosen the zoom controller. Adjust the zoom factor by moving the controller the left or right until the desired range is achieved. Tighten the zoom controller once completed.