



## DAY & NIGHT PoE DOME NETWORK CAMERA

### WIRED PoE ACCESS

Built-in 802.3af compliant Power over Ethernet (PoE) module, for a simple and more cost effective installation

### Day & Night Surveillance

CCD sensor, and low lux sensitivity for high quality images in variable lighting conditions.

### DUAL-STREAM SUPPORT

Simultaneous dual-streaming for live monitoring and recording

### DAY AND NIGHT SURVEILLANCE

D-Link's DCS-6410 day and night PoE-enabled network camera is a professional camera for round-the-clock surveillance. It features built-in LEDs for night time viewing of up to 49 feet (15 meters). DCS-6410 uses a CCD sensor to deliver high quality images without any distortions. This day and night camera is designed for indoor surveillance such as homes, buildings and business applications.

### POWERFUL SURVEILLANCE

DCS-6410 is a high-performance dome network camera designed to produce exceptional quality images even in low-lighting conditions. It supports simultaneous dual-streaming for live monitoring and recording, and delivers excellent video quality at D1/30 frames per second. Embedded with powerful SoC (System-on-Chip), the camera provides high quality real-time video compression in MPEG-4 and motion JPEG formats. In addition, the free-bundled 32-channel recording software makes DCS-6410 an ideal solution for high quality viewing and reliable recording.

With a built-in Samba client for NAS, DCS-6410 network camera does not need a direct connection to a PC or any other hardware or software to capture and transfer images.

### SHARP IMAGE MONITORING FROM DIFFERENT ANGLES

DCS-6410 provides high quality real-time videos in MPEG-4 and JPEG compression with D1/CIF/QCIF resolution for Images are delivered at a maximum resolution of D1 at up to 30 frames per second. DCS-6410 easily adapts to different network environments. For example, it is suitable for narrow space surveillance, like an elevator.

### 3GPP MOBILE SURVEILLANCE<sup>1</sup>

DCS-6410 supports 3GPP mobile surveillance. A live camera feed from the camera can be pulled from a 3G cellular network through a 3G cell phone, PDA or any compatible RTSP (Real Time Streaming Protocol) devices. Anywhere within the 3GPP service area, users are offered a flexible and convenient way to remotely monitor their homes or office in real time.

### WIRED PoE ACCESS

Compact dome design and Power over Ethernet connectivity allows for discreet installation in virtually any indoor or outdoor location. For effective surveillance in and around a building, this camera comes with a built-in 802.3af compliant Power over Ethernet (PoE) module, which eases the installation process and also gives you the freedom to place the camera where it's needed. In addition, the 10/100BASE-TX Ethernet port is also provided for convenient connection to an Ethernet network or to a broadband Internet via a gateway router. The camera can be accessed and viewed from any network place as a device on the network. It also features an RCA connector which can be integrated easily into your existing analog CCTV (closed circuit television) system. This helps users migrate analog security system into an IP-based video solution.

### EASY TO INSTALL AND MANAGE

DCS-6410 is designed for easy installation. It can either be surface mounted or drop ceiling bracket is another alternative option for an installation method. DCS-6410 gives you the flexibility to maintain an effective and reliable IP Surveillance system. The network camera can be managed using D-ViewCam software. It allows you to view up to 32 cameras on a single computer screen at one central location. Users can set up automated e-mail alerts to be instantly informed of unusual activities. In addition, this network camera supports the Universal Plug-n-Play feature, which allows computers running on Windows XP/Vista to automatically recognize the camera and adds it to the network. Sign up with D-Link DNS services available on the web, to assign a name and domain to the camera (e.g. mycamera.dlinkddns.com). This allows users to remotely access the camera without having to remember the IP address.

#### WHAT THIS PRODUCT DOES

DCS-6410 is a PoE-enabled network camera with day and night feature designed to deliver clear, high-resolution images. With the built-in infrared LEDs, the network camera can effectively monitor distance up to 49 feet in the night. DCS-6410 is ideal for security surveillance delivering high quality real-time videos in MPEG-4 and JPEG compression for small to medium-sized businesses, office and homes. In addition, it supports dual stream output for simultaneous live monitoring and high resolution recording. With 3G video support, DCS-6410 connects to your Ethernet to enable remote monitoring over the Internet. DCS-6410 is a deluxe-size dome network camera, giving you a more professional look to your business or location making it an excellent choice for home and business surveillance.

#### REMOTE MONITORING OPTION

DCS-6410 supports 3GPP mobile surveillance feature that enables you to view a live video feed from your camera on a 3G mobile phone or PDA anywhere in your 3G coverage area. The 3G mobile video support allows remote monitoring without using a computer or an internet connection. D-ViewCam software is also included to manage up to 32 cameras simultaneously from your computer, send automated e-mail alerts, and record video to your hard drive when motion is detected.



#### TECHNICAL SPECIFICATIONS

##### NETWORK PROTOCOL SUPPORT

- + TCP/IP, RTSP, RTP, RTCP, HTTP, SMTP, FTP, NTP, DNS, DHCP, UPnP, DDNS, PPPoE, ICMP, Samba client, 3GPP

##### BUILT-IN NETWORK INTERFACE

10/100BASE-TX Ethernet Port

##### LAN

- + IEEE 802.3 compliance
- + IEEE 802.3u compliance
- + Supports Full-Duplex operations
- + 802.3x Flow Control support for Full-Duplex mode
- + Supports IEEE 802.3af standard (PoE)

##### CAMERA SPECIFICATIONS

- + Built-in 1/3-inch CCD sensor
- + Minimum illumination: 0.1 lux @ F1.6 (typical); 0 lux (10 meter range with optional IR lens)
- + Lens: 4.3mm, F1.6
- + Resolution: 420 TV lines
- + AGC / AWB / AES
- + Electronic Shutter:
  - NTSC: 1/60 ~ 1/100,000 sec.
  - PAL: 1/50 ~ 1/110,000 sec.
- + IR LEDs (15 meter range)
- + Field of view: 92.4° diagonal, 55.35° vertical, 73.8° horizontal

##### VIDEO FEATURES

- + Adjustable image size and quality
- + Time stamp and text overlays
- + Motion adaptive de-interlacing
- + 16x digital zoom

##### PAN AND TILT FUNCTIONS

- + Pan Range: 170° ~ -170° (by manual)
- + Tilt Range: 60° ~ -15° (by manual)

##### VIDEO RESOLUTION

- + NTSC support:
  - up to 30 fps at 176x120
  - up to 30 fps at 352x240
  - up to 30 fps at 704x480
- + PAL support:
  - up to 25 fps at 176x144
  - up to 25 fps at 352x288
  - up to 25 fps at 704x576

##### VIDEO ALGORITHM SUPPORT

- + JPEG for still images
- + Simultaneous MPEG4/MJPEG dual format compression
- + Simultaneous profile support for web viewing, 3G mobile viewing and video recording

##### AUDIO

- + Sampling rate:
  - GSM-AMR: 12.20 Kbps
  - PCM: 8 Kbps
- + Full duplex audio communication

##### LED INDICATORS

- + Link & Power

##### I/O CONNECTOR

- + 2 inputs
- + 1 output

##### PORT SUPPORT EXTERNAL PT DEVICES

- + RS-485

##### MEMORY

- + SDRAM: 64 MB
- + Flash ROM: 8 MB

##### RESET BUTTON

- + Reset to factory default settings

##### SYSTEM REQUIREMENTS

- + Windows XP, Vista

##### REMOTE MANAGEMENT

- + Configuration can be accessed via web browser
- + Take snapshots and save to hard drive via web browser

##### SECURITY

- + Administrator and user group protected
- + Password authentication

##### SURVEILLANCE SOFTWARE FUNCTIONS

- + Remote management and control of up to 32 IP cameras
- + View up to 32 cameras on one screen
- + Supports all management functions provided in web interface
- + Scheduled motion triggered or manual recording options

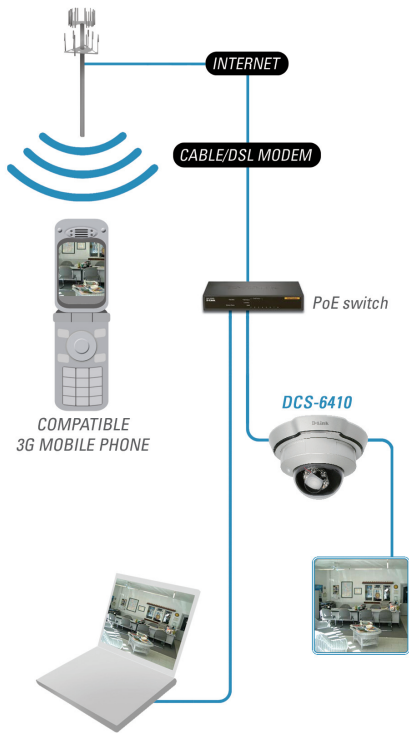
##### OPTIONAL ACCESSORIES

- + External Speakers

##### POWER INPUT

100-240V AC, 50/60 Hz, 1A

#### YOUR NETWORK SETUP



**POWER OUTPUT**  
12V DC, 1.25A

**POWER CONSUMPTION**  
11.04 watts maximum

**DIMENSIONS**  
195 (W) x 180 (D) x 110 (H) mm

**WEIGHT**  
575.5g

**OPERATING TEMPERATURE**  
0° to 40°C (32° to 104°F)

**STORAGE TEMPERATURE**  
-20° to 70°C (-4° to 158°F)

**HUMIDITY**  
20 to 80% non-condensing

**EMISSION (EMI), SAFETY & OTHER CERTIFICATIONS**

- + FCC Class B
- + IC
- + CE
- + C-Tick

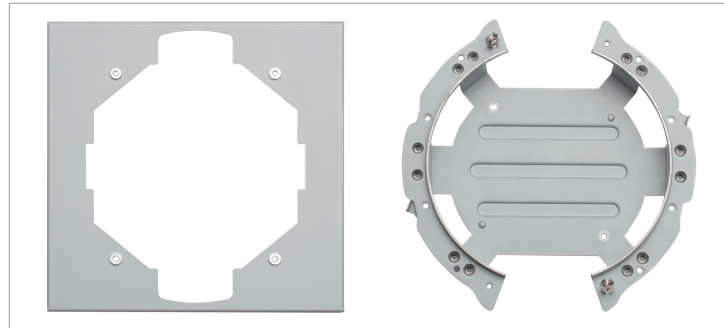
#### Surface installation



#### Drop-ceiling installation



#### Drop-ceiling Bracket (optional)



<sup>1</sup> The mobile device must have 3G support and subscribe to 3G service from the phone service provider. The playback device must be equipped with 3G video playback such as RealPlayer™ or PacketVideo™.



D-Link Corporation  
No. 289 Xinhua 3rd Road, Neihu, Taipei 114, Taiwan  
Specifications are subject to change without notice.  
D-Link is a registered trademark of D-Link Corporation and its overseas subsidiaries.  
All other trademarks belong to their respective owners.  
©2009 D-Link Corporation. All rights reserved.  
Release 01 (January 2009)