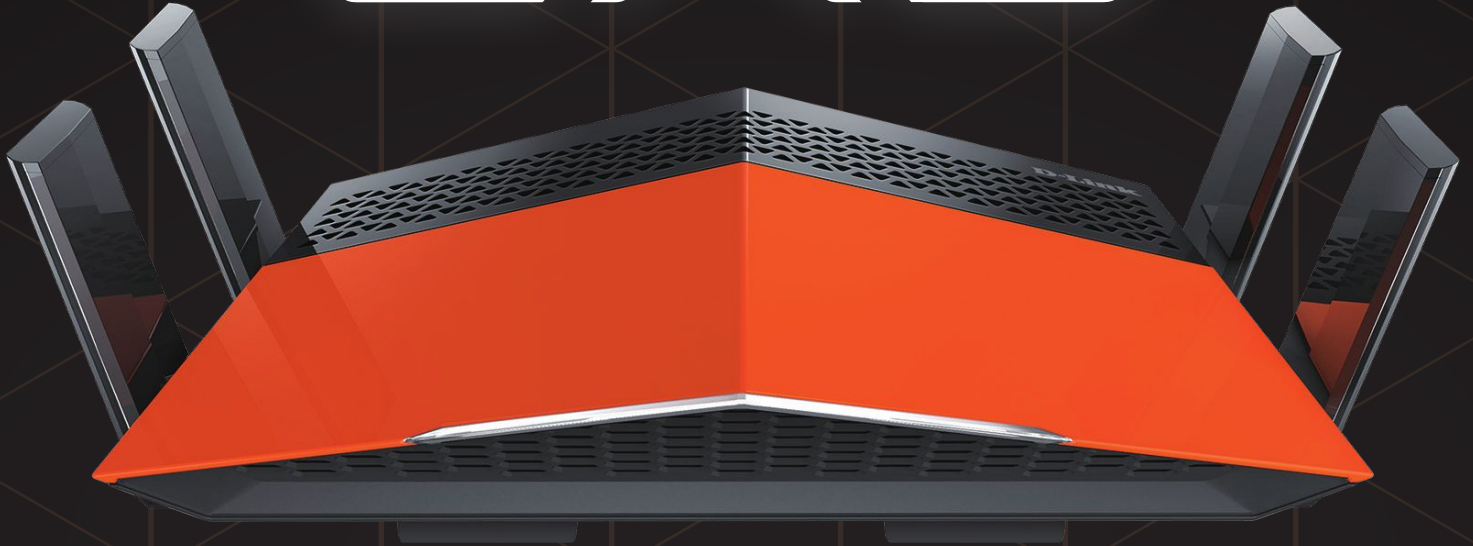


**EXO**



**FAST** looks  
and **PERFORMANCE** to match



1.0 GHz Dual Core  
Processor  
Better, Faster, Stronger



Dual-Band Wi-Fi  
Ultimate Coverage,  
Ultimate Reliability



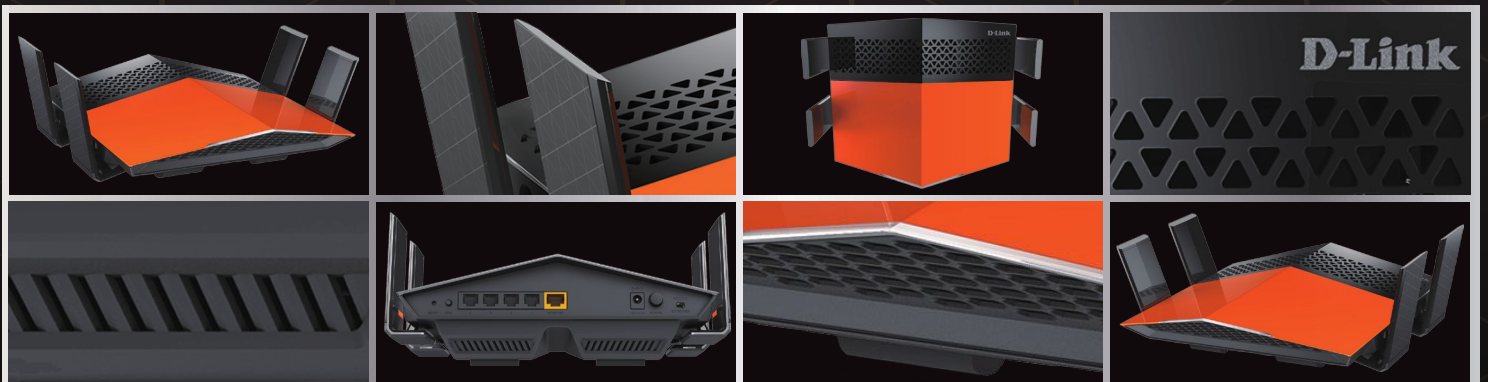
D-Link Smart  
Connect Technology  
Hassle Free Connectivity



Advanced AC  
SmartBeam  
Enhanced Speed & Range

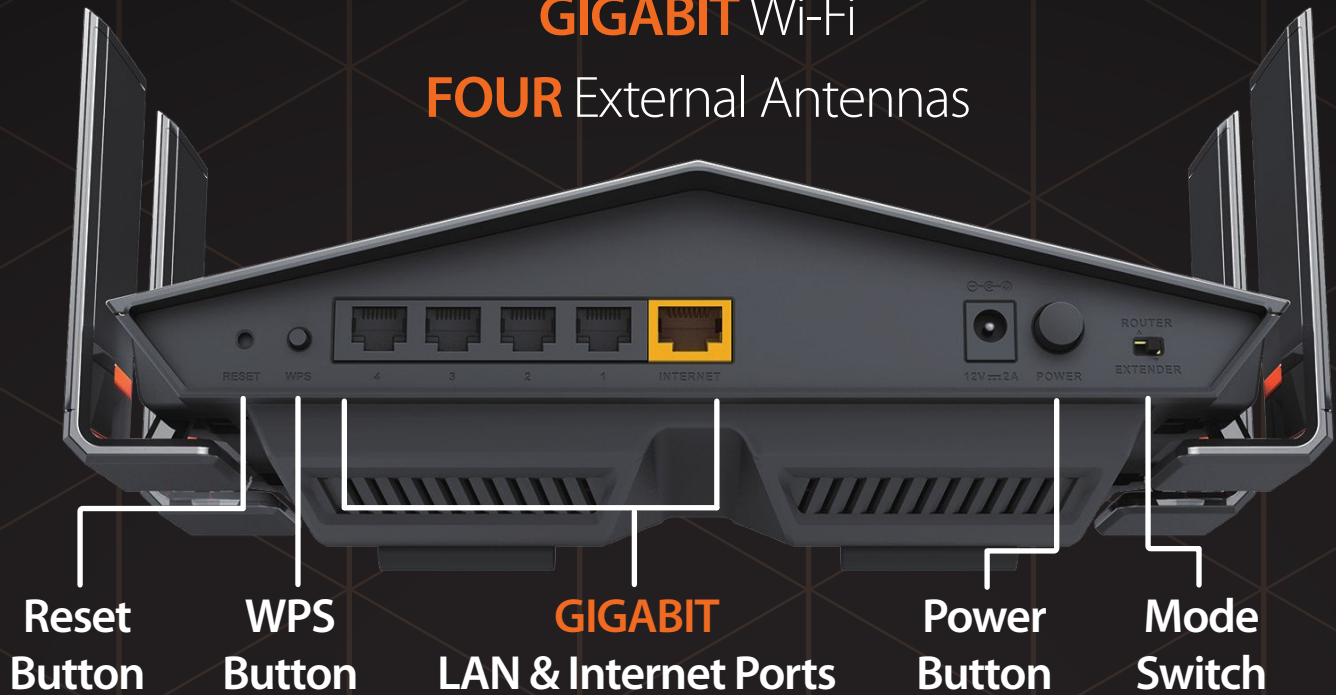


High Power Amplifier  
Stronger Signal &  
Longer Range



# HYPER-FAST SPEED FOR HD STREAMING & GAMING

**GIGABIT** Wi-Fi  
**FOUR** External Antennas



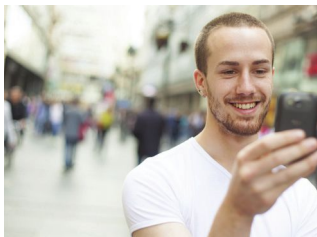
## Super-Charged with Smarter Wireless AC Features

The DIR-879's 802.11ac wireless standard brings a host of new technologies to create the best wireless networking experience to date. High-Speed 802.11ac provides Gigabit wireless connectivity of up to 1900 Mbps (Up to 1300 Mbps 5 GHz AC + up to 600 Mbps 2.4 GHz N)<sup>1,2</sup> allowing you to create a blazing fast home network that connects all of your computers, game consoles, 4K video capable set top boxes, and mobile devices to your broadband Internet connection. Plus, with AC SmartBeam technology you don't have to worry about your existing older devices limiting performance.



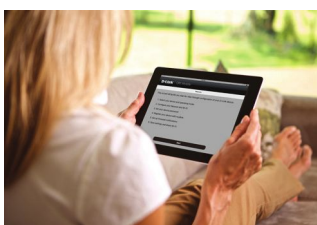
## More Power, More Antennas, More Coverage

The DIR-879 features the strongest and most sensitive wireless radio we've ever built, offering four times the power of a typical wireless router's<sup>3</sup>, letting you blanket large areas or multi-story buildings with Wi-Fi. The DIR-879's superior design allows you to enjoy full motion, high definition video calls on your mobile device while moving from room to room in your home. Featuring a 3x4 antenna configuration, the DIR-879 offers better data rates, fewer dead-spots, more coverage, and increased reliability.



## Hassle-Free D-Link Smart Connect Technology

Ever since the introduction of 5 GHz wireless technology, users have had to blindly guess whether 5 GHz or 2.4 GHz would provide them with the best networking experience. D-Link's Smart Connect Technology eliminates this confusion by automatically distributing devices to the optimal network. Simply initiate a connection to the DIR-879 and its advanced algorithms will determine the best network for your device to connect to, thereby ensuring a faster, more reliable, and hassle-free experience for all of your friends and family.



## Easy to Set Up and Use

Get the DIR-879 up and running in no time right from your couch using the QRS (Quick Router Setup) Mobile application on your smartphone or tablet. Simply plug in the router, open the application, and follow a few easy steps to get your home network connected without having to touch a computer. You can also set up a secure network with the touch of a button using Wi-Fi Protected Setup or use the built in web-based configuration utility.

# DIR-879 AC1900 Wi-Fi Router

## Technical Specifications

### General

Connectivity	<ul style="list-style-type: none"> <li>• IEEE 802.11 ac/n/g/b/a wireless LAN</li> <li>• 10/100/1000 Gigabit Ethernet WAN port</li> </ul>	<ul style="list-style-type: none"> <li>• Four 10/100/1000 Gigabit Ethernet LAN ports</li> </ul>
Device Interfaces	<ul style="list-style-type: none"> <li>• LED Indicator</li> <li>• Mode Switch<sup>4</sup></li> <li>• Power Button</li> </ul>	<ul style="list-style-type: none"> <li>• WPS Button</li> <li>• Reset Button</li> </ul>
Antenna Type	<ul style="list-style-type: none"> <li>• Four Adjustable External Antennas</li> </ul>	<ul style="list-style-type: none"> <li>• 3x4 Antenna Configuration</li> </ul>
Radio Output	<ul style="list-style-type: none"> <li>• 1000 mW<sup>3</sup></li> </ul>	
Operating Frequency	<ul style="list-style-type: none"> <li>• 2.4 GHz Band: 2400 - 2483.5 MHz</li> </ul>	<ul style="list-style-type: none"> <li>• 5 GHz Band: 5150 - 5725 MHz</li> </ul>
Signal Rate	<ul style="list-style-type: none"> <li>• 2.4 GHz</li> <li>• 600 Mbps<sup>1</sup></li> </ul>	<ul style="list-style-type: none"> <li>• 5 GHz</li> <li>• 1300 Mbps<sup>1</sup></li> </ul>
Standards	<ul style="list-style-type: none"> <li>• IEEE 802.11ac</li> <li>• IEEE 802.11n</li> <li>• IEEE 802.11g</li> <li>• IEEE 802.3ab</li> </ul>	<ul style="list-style-type: none"> <li>• IEEE 802.11b</li> <li>• IEEE 802.11a</li> <li>• IEEE 802.3u</li> </ul>
Minimum Requirements	<ul style="list-style-type: none"> <li>• Windows 8/7/Vista or MAC OS X 10.6 or higher</li> <li>• Internet Explorer 11, Firefox 20, Safari 7, or Chrome 25 or higher version with Java installed and enabled</li> </ul>	<ul style="list-style-type: none"> <li>• Wired or Wireless Network interface card</li> <li>• Cable/DSL modem or other Internet Service Provider equipment with Ethernet port</li> </ul>

### Functionality

Security	<ul style="list-style-type: none"> <li>• WPA &amp; WPA2 (Wi-Fi Protected Access)</li> </ul>	<ul style="list-style-type: none"> <li>• WPS (Wi-Fi Protected Setup)</li> </ul>
Advanced Features	<ul style="list-style-type: none"> <li>• Smart Connect</li> <li>• Web setup wizard</li> <li>• QoS (Quality of Service)</li> </ul>	<ul style="list-style-type: none"> <li>• Firewall - Network Address Translation (NAT)</li> <li>• Guest zone</li> <li>• DMZ (Demilitarized Zone)</li> </ul>

### Physical

Dimensions	<ul style="list-style-type: none"> <li>• 219.67 x 199.45 x 73.55 mm (8.65 x 7.85 x 2.90 inches)</li> </ul>	
Weight	<ul style="list-style-type: none"> <li>• 539.7 g (19.04 ounces)</li> </ul>	
Power Adaptor	<ul style="list-style-type: none"> <li>• Input: 100 to 240 V AC, 50/60 Hz</li> </ul>	<ul style="list-style-type: none"> <li>• Output: 12 V, 2 A</li> </ul>
Temperature	<ul style="list-style-type: none"> <li>• Operating: 0 to 40 °C (32 to 104 °F)</li> </ul>	<ul style="list-style-type: none"> <li>• Storage: -20 to 65 °C (-4 to 149 °F)</li> </ul>
Humidity	<ul style="list-style-type: none"> <li>• Operating: 10% to 90% non-condensing</li> </ul>	<ul style="list-style-type: none"> <li>• Storage: 5% to 95% non-condensing</li> </ul>
Certifications	<ul style="list-style-type: none"> <li>• FCC</li> <li>• CE</li> <li>• IC</li> <li>• CCC</li> <li>• BSMI</li> </ul>	<ul style="list-style-type: none"> <li>• NCC</li> <li>• CSA international</li> <li>• WMM-PS</li> <li>• WPS</li> <li>• Wi-Fi Certified</li> </ul>

# DIR-879 AC1900 Wi-Fi Router

Order Information	
<i>Part Number</i>	<i>Description</i>
DIR-879	AC1900 Wifi Router

<sup>1</sup>Maximum wireless signal rate derived from IEEE Standard 802.11ac and IEEE 802.11n specifications. Actual data throughput will vary. Network conditions and environmental factors, including volume of network traffic, building materials and construction, and network overhead, lower actual data throughput rate. Environmental factors will adversely affect wireless signal range. Wireless range and speed rates are D-Link relative performance measurements based on the wireless range and speed rates of a standard Wireless G product from D-Link. Maximum throughput based on D-Link 802.11n devices.

<sup>2</sup>Up to 600 Mbps data-rate with 256 QAM compatible wireless client.

<sup>3</sup>Determined by FCC regulation. Maximum wireless transmission power output is subject to regional radio frequency guidelines.

<sup>4</sup>Extender mode requires future firmware update, expected availability Q1 2016.

Updated December 28, 2015 5:03 PM