



ADSL2+ 1 Port Ethernet / USB Combo Router

HIGH-SPEED ADSL2+ INTERNET CONNECTION

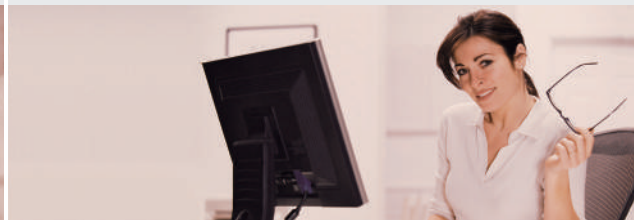
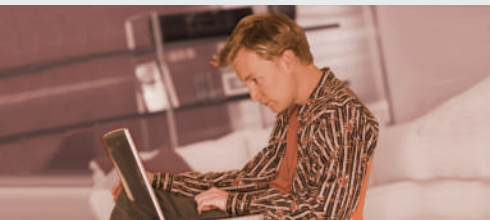
Latest ADSL2+ standard provides Internet transmission of up to 24Mbps downstream, up to 1Mbps upstream

ALL-IN-ONE SINGLE BOX SOLUTION

Built-in ADSL modem, Ethernet ports, QoS and Firewall protection, all in one single palm-sized box

TOTAL COMPATIBILITY & EASE OF USE

Works with all major Internet Service Providers, simple installation



AFFORDABLE HIGH-SPEED CONNECTION FOR HOME & SMALL OFFICE

The DSL-2520U ADSL2+ modem router is an affordable high-performance ADSL device for home and the small office. With integrated ADSL2/2+ supporting up to 24Mbps download speed, firewall protection and Quality of Service (QoS), this router provides all the essentials that a home or small office needs to establish a secure and high-speed remote link to the outside world.

FIREWALL PROTECTION & QOS

Security features prevents unauthorized access to the home and office network from Internet intruders. The router provides firewall security using DMZ (Demilitarised Zone) protection. DMZ allows computers behind the router firewall to be accessible to Internet traffic. Router access control is provided with packet filtering from the LAN based on port and source/destination IP addresses. For Quality of Service (QoS), the router supports multiple priority queues to enable a group of home or office users to experience the benefit of smooth network connection of inbound and outbound data without concern of traffic congestion. This QoS support allows users to enjoy high ADSL transmission for applications such as streaming multimedia and on-line games over the Internet.

DSL-2520U

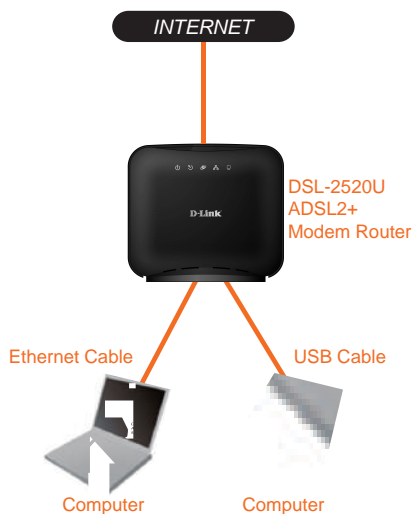
WHAT THIS PRODUCT DOES

This ADSL modem router connects your computer to the Internet using an integrated high-speed ADSL2+ interface. It provides NAT and DMZ firewall to protect your computer from Internet attacks, and QoS functions to prioritize traffic for smooth on-line games, streaming multimedia as well as download of large files, photos, music and video. When needed, multiple computers at home and the office can also share the high-speed Internet line using the router's built-in DHCP server/NAT functions and an externally connected Ethernet switch.

GET HIGH-SPEED ADSL SPEED

Ready ADSL connection with up to 24Mbps downstream and 1Mbps upstream. Watch TV, listen to live music and broadcast on the Internet, play games. Now, smooth streaming multimedia are possible at home and in the office through a simple connection to this router.

YOUR COMPUTER INTERNET CONNECTION



TECHNICAL SPECIFICATIONS

DEVICE INTERFACES

- RJ11 ADSL port
- RJ45 Ethernet LAN port
- Factory reset button
- USB1.1/2.0 device port

ADSL STANDARDS

- Full ADSL2+2/1 standards
- Discrete Multi-Tone (DMT)
- ANSI T1.413 Issue 2
- Annex A,I,J,L,M
- ITU G.992.1 (G.dmt)
- ITU G.992.2 (G.lite)
- ITU G.992.3 ADSL2 (G.dmt.bis)
- ITU G.992.5 (G.dmt.bisplus)

ATM SPECIFICATION

- Support AAL5
- Support 8 Permanent Virtual Circuits (PVCs)
- UBR, CBR, rt-VBR, nrt-VBR
- ITU-T I.610 OAM Principles & Functions (include F4/F5)

BASIC PROTOCOLS

- Multiple protocol encapsulation over AAL5:
- Support Logical Link Control (LLC) encapsulation
- Support VC-based multiplexing
- Support Bridged and Routing
- PPP over AAL5:
- Support LLC encapsulation
- Support PPP over Ethernet Pass through
- Support PPP over Ethernet
- Classical IP over ATM

BRIDGED FUNCTION

- Transparent, learning bridge with spanning tree support

ROUTING FUNCTION

- IPv4, TCP, UDP, ICMP, ARP, RARP, proxy-ARP
- Static Routing
- DHCP Server/Client
- IGMP v1, v2 Proxy
- Dynamic DNS

SECURITY

- Network Address Translator (NAT)
- PPP with PAP/CHAP
- Raw/IP Filtering
- SPI
- L2TP/PPTP Pass Through
- VPN: IPsec Pass Through
- DoS (UDP, TCP), Detection of Known Attacks
- Detect port scan attack
- ID/Password Authentication

MANAGEMENT

- Configuration through Web interface
- Configuration through Telnet connection
- Implement Log & Trace function
- PVC&ECO
- TFTP, FTP and HTTP for firmware download

DIAGNOSTIC LEDS

- Power
- DSL
- Internet
- Ethernet
- USB

POWER SUPPLY

- 12VDC/0.5A switching power adaptor

DIMENSION

- 110mm(L)*98mm(W)*37mm(H)

OPERATING TEMPERATURE

- 32F to 104F (0 C to 40 C)

STORAGE TEMPERATURE

- -4F to 149F (-20 C to 65 C)

HUMIDITY

- 5% to 95% (non-condensing)

EMC CERTIFICATION

- CE

*Actual data throughput will vary. Network conditions and environmental factors, including volume of network traffic, building materials and construction, and network overhead lower actual data throughput rate and adversely affect the range.



D-Link Corporation

No. 289 Xinhu 3rd Road, Neihu, Taipei 114, Taiwan

Specifications are subject to change without notice.

D-Link is a registered trademark of D-Link Corporation and its overseas subsidiaries.

All other trademarks belong to their respective owners.

©2012 D-Link Corporation. All rights reserved.

Release 01 (Feb 2012)