

# IS-DF103 Series

Compact size media converter, 2 10/100BASE-TX to 100BASE-FX



The IS-DF103 Series support one (1) 100BASE-FX, two (2) 100BASE-TX ports, which designed for mission critical Fast Ethernet to fiber Industrial media conversion applications. The IS-DF103 Series can be powered by wide range of DC power inputs. With its compact, easy to use design, the IS-DF103 Series can be installed on Din-Rail or be wall-mounted. As the ideal unit for IP surveillance, traffic monitoring and Security application in critical environments, the IS-DF103 Series also works great in extreme environments with its operating temperature is -40°C to 75°C, which is good for operating in extreme environment for network extensions.



## Key features

- ▶ Rugged fan less design
- ▶ Layer 2 Line-Speed Switching Fabric, non-blocking (Switch mode)
- ▶ Wide range power input, 12~58 VDC Input
- ▶ Link Fault Pass through (LFP) function
- ▶ Supports switch model and converter mode.
- ▶ Support Broadcast storm protection
- ▶ Support Far End Fault function on FX port.
- ▶ Provides increased Noise Immunity
- ▶ -40°C to 75°C operating temperature
- ▶ 2 KV surge immunity on RJ45 ports
- ▶ 1.5KV Hipot

## Specification

### Ethernet

Operating Mode	Store and Forward, L2 wire-speed/non-blocking switching engine
MAC addresses	1K
Packet Buffer	1 Mbits
Switching Fabric / Back Plane	600Mbps

### RJ45 Copper ports

Speed	10/100 Mbps
MDI/MDIX Auto-crossover	Support straight or cross wired cables
Auto-negotiation/Duplex	10/100 Mbps speed auto-negotiation; Full & Half Duplex

### Fiber Ports

Port Types supported	Fixed SFP, LC connector
Fiber port connector	LC connector for fiber ports
Optimal fiber cable	Typical 50 or 62.5/125 $\mu$ m for multimode (mm) Typical 8 or 9/125 $\mu$ m for single mode (sm)

### Protocols & Standards

IEEE 802.3 , IEEE 802.3x, Flow Control, Back Pressure, TCP/UDP
--

### Power

Power Input	Redundant Power Input, Terminal Block
Input Voltage Range	12~58 VDC
Reverse power protection	YES
Power Consumption	3 Watt (24VDC)

### Indicators

Power status indication	Power Input status
Ethernet port indication	Link & speed

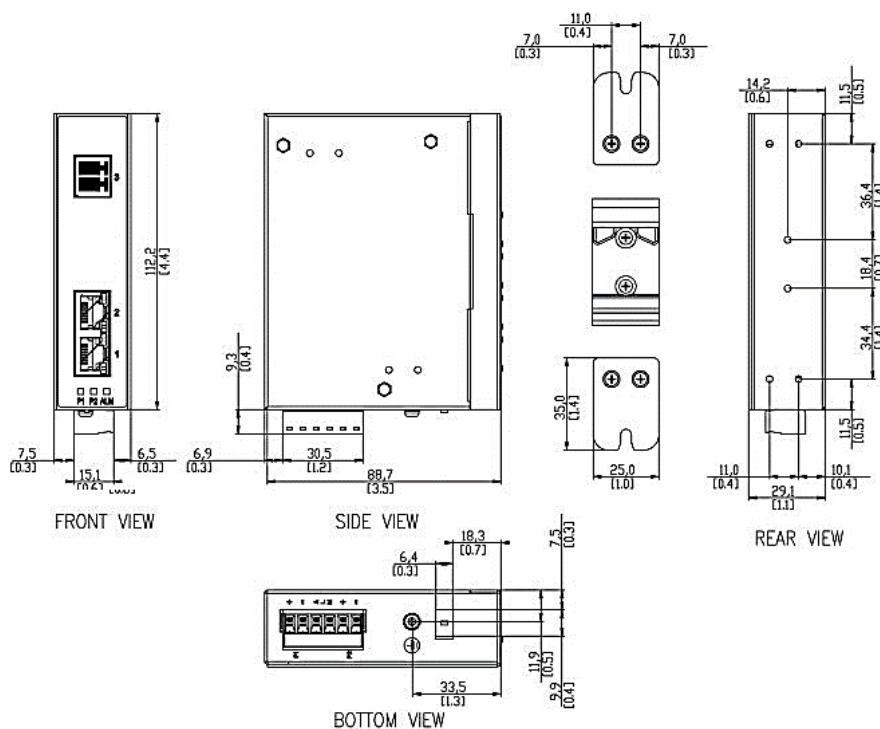
## Environmental and Compliances

Operating Temperature	-40~75°C (Cold startup at -40°C)
Storage Temperature	-40~85°C
Humidity	5~95% (Non-Condensing)
Vibration, shock, free fall	IEC-60068-2-6, -27, -32
Certification Compliance	CE, FCC
Electrical safety	CE
EMC	FCC Part 15, CISPR 22 (EN55022) Class A IEC-61000-4-2, -3, -4, -5, -6 (Level 3)
RoHS & WEEE	RoHS (Pb free) and WEEE Compliant
MTBF	>25 years

## Mechanical

Protection	IP30
Dimension	109.2mm (H) x 29.1mm (W) x 89.4mm (D) ( without DIN rail clip)
Weight	320g
Installation	DIN-Rail mounting; Wall mounting
DIP	LFP (Link Fault Pass Through) Enable/Disable Broadcast storm protection

## Dimension Diagram



## Ordering Information

Available Models	Description	10/100Mb TX	100 Mb FX
IS-DF103-M	Industrial Media Converter, 10/100M TX to 100M MM LC Connector, 2km	2	1
IS-DF103-S	Industrial Media Converter, 10/100M TX to 100M SM LC Connector, 40km	2	1

## Accessories

1. IS-RK2U 19" rack mount kit
2. IS-RK4U 19" rack mount kit
3. IS-PS20-12 Power adaptor

## Package Checklist

- IS-DF103 Media converter
- Quick Installation Guide (Printed)
- Wall Mount kit /Din-Rail kit