

Specifications

Model	TDJ-5758SPL9A
Freq. Range-MHz	5150 ~ 5850
Bandwidth-MHz	700
Gain-dBi	30
Ver. Beamwidth-°	5
Hor. Beamwidth-°	3.5
F/B Ratio-dB	≥25
VSWR	≤1.5
Impedance-Ω	50
Polarization	Vertical or Horizontal
Max. Power-W	100
Connector Type	N Female
Caliber Size-m	0.6x0.9
Weight-Kg	5
Pole Diameter-mm	φ40 ~ 50

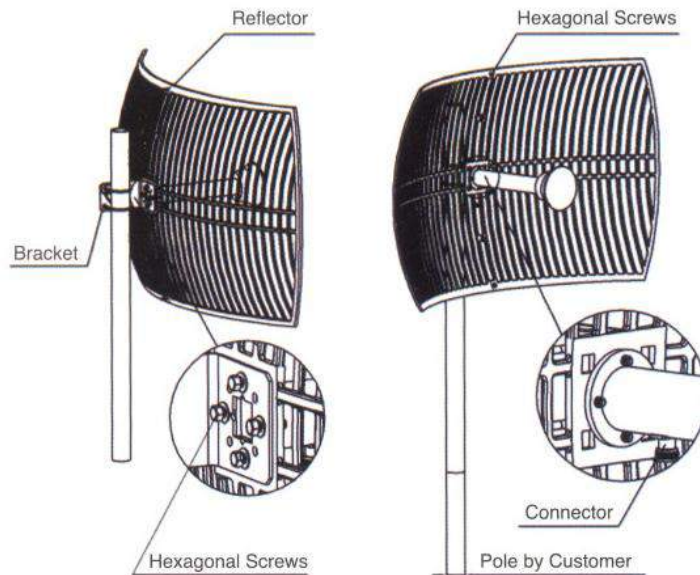
Applications

- 5.1GHz/5.5GHz/5.8GHz WLAN
- 5GHz WiMax System
- Client Antenna

Features

- High Gain, Good F/B
- High Precise Grid Reflector
- UV-Coated Aluminium Alloy
- V/H Polarization is Compatible
- Standard Mounting Kits

Install Sketch



Installation:

1. Assemble two pieces of Reflectors Symmetrically.
2. Install the feedhorn on the reflector. Make sure the polarization mark arrow direction on the feedhorn accords with the grid direction. When the arrow direction and the grid direction are both vertical to the ground, the antenna is vertically polarized. When the arrow direction and the grid direction are both parallel to the ground, the antenna is horizontally polarized.
3. Install the L bracket on the back of the reflector then install the antenna on the mast supplied by the customer according to the sketch.
4. Use equipments to test the receiving single. Tune the antenna azimuth angle and pitching angle to make the antenna receive best single. Fasten all the screws and seal the connector which connects the antenna and cable.

