

LINKSYS™

User Guide

LAPAC1200
AC1200 Dual Band
Access Point

Table of Contents

CHAPTER 1 QUICK START GUIDE.	1
Package Contents	1
Physical Details.	1
Mounting Guide	2
CHAPTER 2 ACCESS POINT SETUP.	3
Overview.	3
Setup Using a Web Browser	3
Setup Wizard	4
User Accounts	5
Time Screen	6
Log Settings Screen	7
Management Access Screen	8
SSL Certificate Screen.	9
Network Setup Screen	10
Advanced Screen	11
Basic Settings	13
Security Settings.	14
Rogue AP Detection.	19
Scheduler	20
Scheduler Association	21
Connection Control	21
Rate Limit	22
QoS	22
Workgroup Bridge.	23
Advanced Settings	24
CHAPTER 3 OPERATION AND STATUS	27
Operation	27
System Summary	27
LAN Status.	28
Wireless Status	29
Wireless Clients.	30
Statistics	30
Log View	31
CHAPTER 4 ACCESS POINT MANAGEMENT	32
Overview.	32
Firmware Upgrade.	32
Configuration.	33
Factory Default.	34
Reboot	34
Ping Test	35
Packet Capture	35
Diagnostic Log	36
APPENDIX A TROUBLESHOOTING.	37
Overview.	37
General Problems	37
APPENDIX B ABOUT WIRELESS LANS.	38
Overview.	38
Wireless LAN Terminology.	38

APPENDIX C PC AND SERVER CONFIGURATION40
Overview40
Using WEP40
Using WPA2-PSK40
Using WPA2-Enterprise41
802.1x Server Setup (Windows 2000 Server)41
802.1x Client Setup on Windows XP46
Using 802.1x Mode (without WPA)49

Copyright © 2014. All Rights Reserved.

Document Version: 1.0

All trademarks and trade names are the properties of their respective owners.

CHAPTER 1 Quick Start Guide

Package Contents

- Linksys Wireless Access Point
- Quick Start Guide
- Ethernet Cable
- AC Power Adapter
- CD with Documentation
- Mounting Bracket
- Mounting Kit
- Ceiling Mount Back Plate
- Drilling Layout Template

Physical Details

There is one LED for the device.

LED

LED Color	Activity	Status
Green	Blinking	System is booting.
	Solid	System is normal; no wireless device connected.
Blue	Blinking	Software upgrade in process.
	Solid	System is normal; at least one wireless device connected.
Red	Solid	Booting process or update failed; hard reset or service required.

Port and Button

Power Port - Connect the AC power adapter to this port.

NOTE: Use only the adapter that came with your access point.

Ethernet Port - Connect a wired network device to this port. This port supports PoE (Power over Ethernet) with a PoE switch or PoE injector. LAPAC1750 can be powered on from an 802.3at(PoE+) compliance source.

NOTE: When both PoE and AC power adapter are connected to access point, device will get power from PoE as higher precedence.

Using Cat5e or better cable is highly recommended.

Reset Button - Press and hold this button for less than 15 seconds to power cycle device. Press and hold for longer than 15 seconds to reset the device to factory default settings.

Mounting Guide

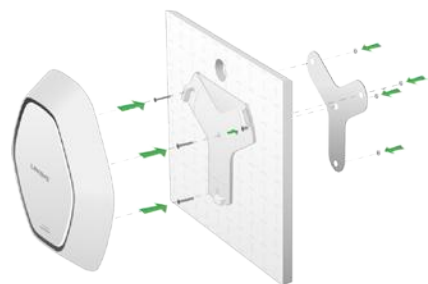
To avoid overheating, do not install your access point if ambient temperatures exceed 104°F (40°C). Install on a flat, stable surface, near the center of your wireless coverage area making sure not to block vents on the sides of the device enclosure.

Wall Installation

1. Position drilling layout template at the desired location.
2. Drill four screw holes on the mounting surface. If your Ethernet cable is routed behind the wall, mark Ethernet cable hole as well.
3. Secure the mounting bracket on the wall with anchors and screws.
4. If your Ethernet cable is routed behind the wall, cut or drill the Ethernet cable hole you marked in Step 2. Feed the Ethernet cable through the hole.
5. Connect the Ethernet cable and/or AC power adapter to your device.
6. Slide the device into the bracket. Turn clockwise until it locks into place.

Ceiling Installation

1. Select ceiling tile for mounting and remove tile.
2. Position drilling layout template at the desired location.
3. Drill four screw holes and Ethernet cable hole on the surface of ceiling tile.
4. Place back plate on the opposite side of ceiling tile. Secure mounting bracket to the ceiling tile with flathead screw and nut. Route the Ethernet cable through the Ethernet cable hole.



5. Replace tile in ceiling.
6. Connect the Ethernet cable and/or AC power adapter to your device
7. Slide the device into the bracket. Turn access point clockwise until it locks.

IMPORTANT

Improper or insecure mounting could result in damage to the device or personal injury. Linksys is not responsible for damages caused by improper mounting.

CHAPTER 2 Access Point Setup

Overview

This chapter describes the setup procedure to connect the wireless access point to your LAN, and configure it as an access point for your wireless stations.

Wireless stations may also require configuration. For details, see *Appendix C - Wireless Station Configuration*.

The wireless access point can be configured using a Web browser.

Setup using a Web Browser

Your browser must support JavaScript. The configuration program has been tested on the following browsers:

- Firefox 3.5 or later, Chrome 8 or later, Safari 5 or later
- Internet Explorer 7 or later

Setup Procedure

Make sure device is powered on before you continue setup. If LED light is off, check that AC power adapter, or PoE cable, is properly connected on both ends.

Access device's browser-based setup:

1. Use the included cable to connect the access point to your network via a network switch or router.
2. Open a web browser on a computer connected to your network. Enter the IP address of your access point. By factory default, the IP address will be assigned by a DHCP server (usually the network router). If there is no DHCP server on your network, the default IP address is 192.168.1.252/255.255.255.0.

Note: Use a computer hardwired to the same network as your access point for browser-based setup access. Access to browser-based setup via WiFi is disabled by default.

3. Type in default username: "admin", and password: "admin".
4. Click **Log in** to launch the browser-based setup and follow the on-screen instructions

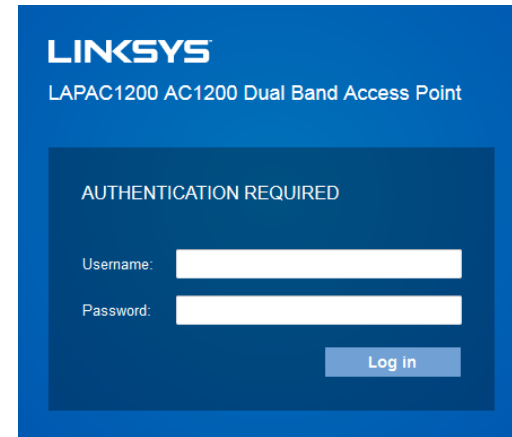


Figure 1: Password Dialog

IF YOU CAN'T CONNECT:

It is likely that your PC's IP address is incompatible with the wireless access point's IP address. This can happen if your LAN does not have a DHCP Server. If there is no DHCP server in your network, the access point will fall back to its default IP address: 192.168.1.252, with a network mask of 255.255.255.0.

Or, if your PC's IP address is not compatible with this, you must change your PC's IP address to an unused value in the range 192.168.1.1 ~ 192.168.1.254, with a network mask of 255.255.255.0. See *Appendix A - Windows TCP/IP* for details for this procedure.

Setup Wizard

The first time you connect to the wireless access point, run the *Setup Wizard* to configure the device.

1. Click the *Quick Start* link on the main menu

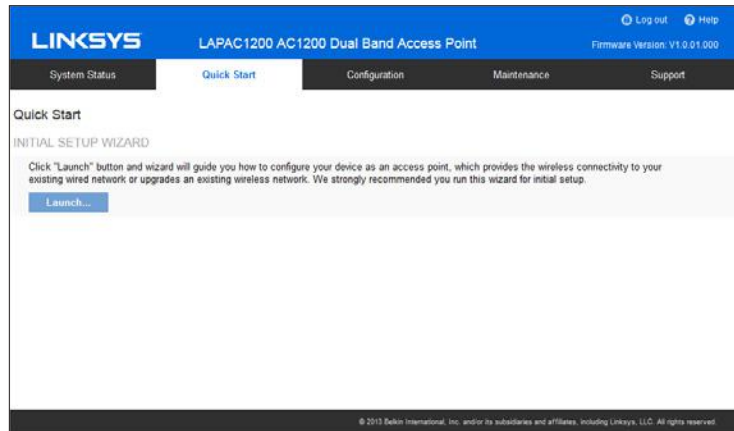


Figure 2: Setup Wizard

2. On the first screen, click **Launch**.
3. Set the password on the *Device Password* screen, if desired.
4. Configure the time zone, date and time for the device on *System Settings* screen.

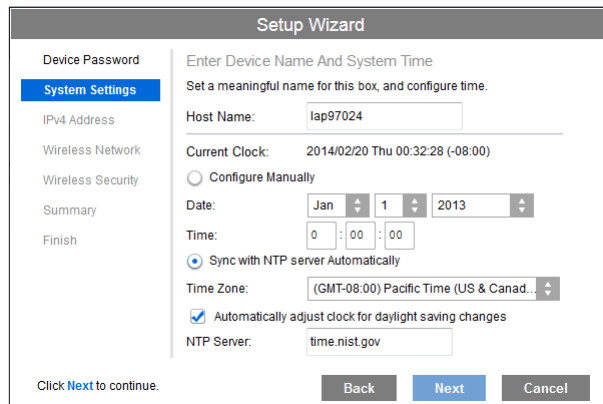


Figure 3: Setup Wizard - System Settings

5. On the *IPv4 Address* screen (Figure 4) configure the IP address of the device then click **Next**. If you want to configure more than 4 SSIDs, please go to Configuration → Wireless → Basic Settings. The access point supports up to 8 SSIDs per radio.

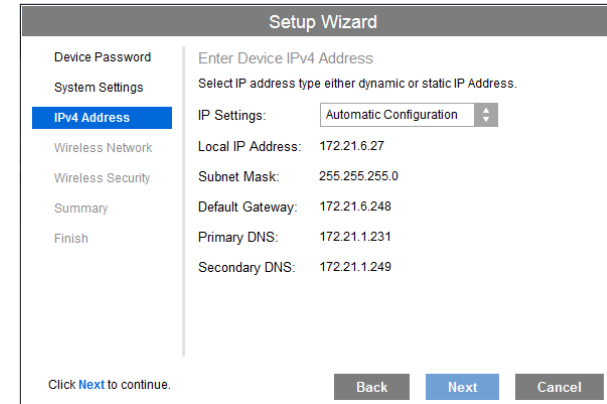


Figure 4: Setup Wizard - IPv4

6. Set the SSID information on the *Wireless Network* screen. Click **Next**.

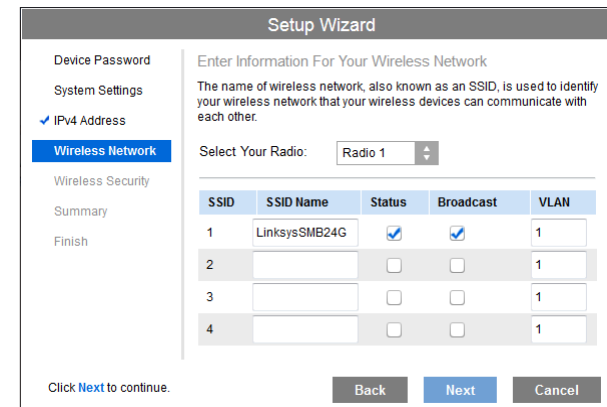


Figure 5: Setup Wizard - Wireless Network

7. On the *Wireless Security* Screen (Figure 6) configure the wireless security settings for the device. Click **Next**. If you are looking for security options that are not available in the wizard, go to Configuration → Wireless → Security page. The access point supports more sophisticated security options there.

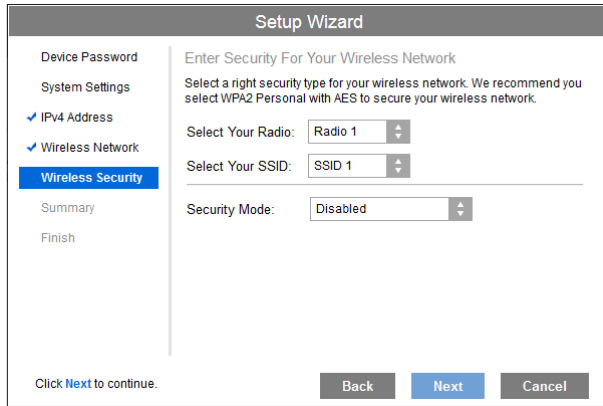


Figure 6: Setup Wizard - Wireless Security

- On the *Summary* screen, check the data to make sure they are correct and then click **Submit** to save the changes.

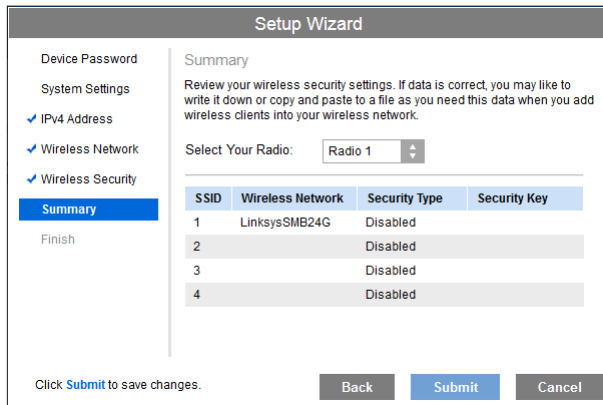


Figure 7: Setup Wizard - Summary

- Click **Finish** to leave the wizard.

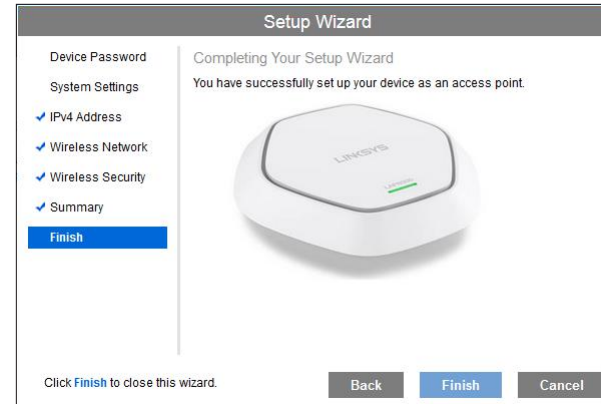


Figure 8: Setup Wizard - Finish

User Accounts

Click *User Accounts* on the Administration menu to manage user accounts. The access point supports up to five users: one administrator and four normal users.

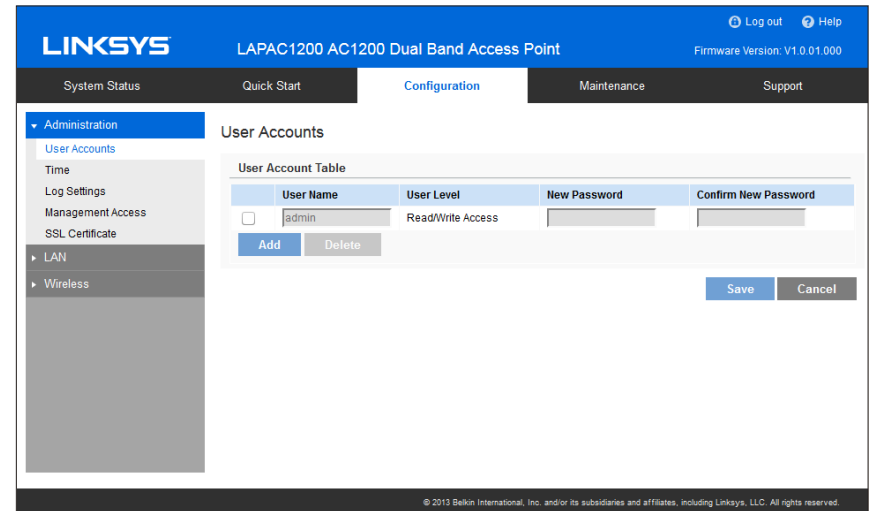


Figure 9: User Accounts

Data - User Accounts Screen

User Account Table	
User Name	Enter the User Name to connect to the access point's admin interface. User Name is effective once you save settings. User Name can include up to 63 characters. Special characters are allowed.
User Level	Only administrator account has Read/Write permission to the access point's admin interface. All other accounts have Read Only permission.
New Password	Enter the Password to connect to the access point's admin interface. Password must be between 4 and 63 characters. Special characters are allowed.
Confirm New Password	Re-enter password.

Data - Time Screen

Time	
Current Time	Display current date and time of the system.
Manually	Set date and time manually.
Automatically	When enabled (default setting) the access point will get the current time from a public time server.
Time Zone	Choose the time zone for your location from the drop-down list. If your location observes daylight saving time, enable "Automatically adjust clock for daylight saving changes."
Start Time	Specify the start time of daylight saving.
End Time	Specify the end time of daylight saving.
Offset	Select the adjusted time of daylight saving.
NTP	
NTP Server 1	Enter the primary NTP server. It can be an IPv4 address or a domain name. Valid characters include alphanumeric characters, "_", "-" and ".". Maximum length is 64 characters.
NTP Server 2	Enter the secondary NTP server. It can be an IPv4 address or a domain name. Valid characters include alphanumeric characters, "_", "-" and ".". Maximum length is 64 characters.

Time Screen

Click *Time* on the Administration menu to configure system time of the device.

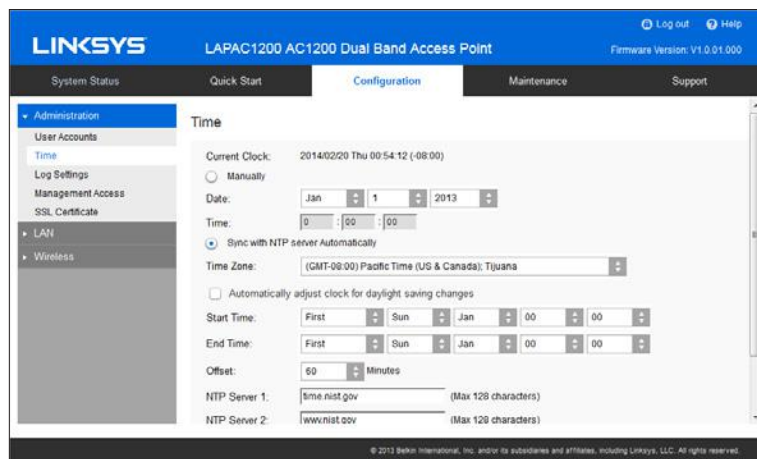


Figure 10: Time Screen

Log Settings Screen

The logs record various types of activity on the access point. This data is useful for troubleshooting, but enabling all logs will generate a large amount of data and adversely affect performance.

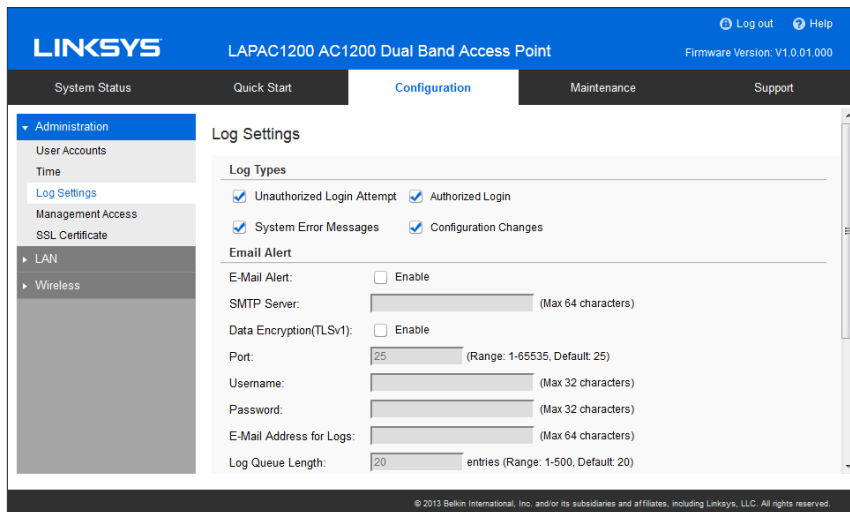


Figure 11: Log Settings Screen

Data - Logs Screen

Log Types	
Log Types	Select events to log. Checking all options increase the size of the log, so enable only events you believe are required.
Email Alert	
Email Alert	Enable email alert function.
SMTP Server	Enter the email server that is used to send logs. It can be an IPv4 address or a domain name. Valid characters include alphanumeric characters, "_", "-", and ".". Maximum length is 64 characters.
Data Encryption	Enable if you want to use data encryption.
Port	Enter the port for the SMTP server. The port is a value from 1 to 65535 and default is 25.
Username	Enter the Username to log in to your SMTP server. The Username can include up to 32 characters. Special characters are allowed.
Password	Enter the Password to log in to your SMTP server. The Password can include up to 32 characters. Special characters are allowed.
Email Address for Logs	Enter the email address the log messages are to be sent to. Valid characters include alphanumeric characters, "_", "-", "." and "@". Maximum length is 64 characters.
Log Queue Length	Enter the length of the queue: up to 500 log messages. The default is 20 messages. When messages reach the set length the queue will be sent to the specified email address.
Log Time Threshold	Enter the time threshold (in seconds) used to check if the queue is full. It's a value from 1 to 600 and default is 600 seconds.
Syslog	
Syslog Notification	Enable Syslog notification.
IP Type	Select the IP type of the syslog server: IPv4 or IPv6.
Server IP Address	Enter the IPv4 or IPv6 address of syslog server here.

Management Access

You can use the *Management Access* page to configure the management methods of the access point.

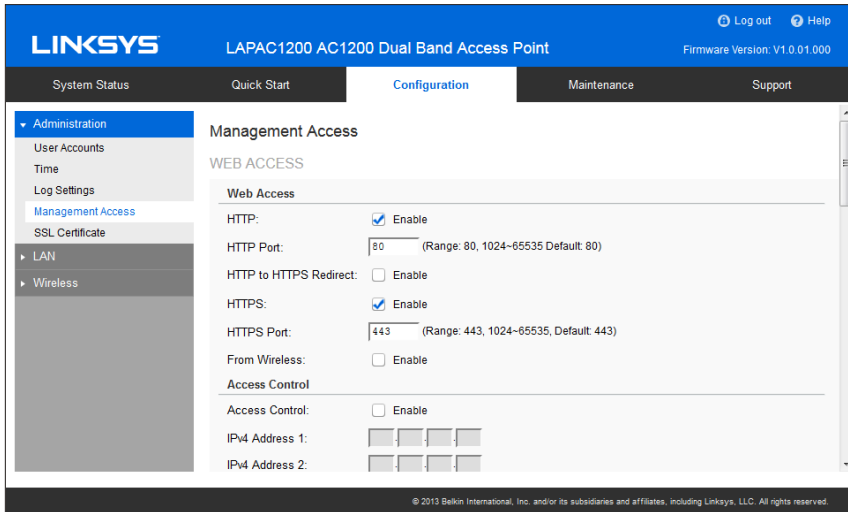


Figure 12: Management Access Screen

Data - Management Access Screen

Web Access	
HTTP	HTTP (Hyper Text Transfer Protocol) is the standard for transferring files (text, graphic images and other multimedia files) on the World Wide Web. Enable to allow Web access by HTTP protocol.
HTTP Port	Specify the port for HTTP. It can be 80 (default) or from 1024 to 65535.
HTTP to HTTPS Redirect	Enable to redirect Web access of HTTP to HTTPS automatically. This field is available only when HTTP access is disabled.
HTTPS	HTTPS (Hypertext Transfer Protocol Secure) can provide more secure communication with the SSL/TLS protocol, which support data encryption to HTTP clients and servers. Enable to allow Web access by HTTPS protocol.
HTTPS Port	Specify the port for HTTPS. It can be 443 (default) or from 1024 to 65535.
From Wireless	Enable wireless devices to connect to access point's admin page. Disabled by default.
Access Control	By default, no IP addresses are prohibited from accessing the device's admin page. You can enable access control and enter specified IP addresses for access. Four IPv4 and four IPv6 addresses can be specified.
SNMP Settings	
SNMP	Simple Network Management Protocol (SNMP) is a network monitoring and management protocol. Enable or disable SNMP function here. Disabled by default.
Contact	Enter contact information for the access point. The contact includes 1 to 32 characters. Special characters are allowed.

Location	Enter the area or location where the access point resides. The location includes 1 to 32 characters. Special characters are allowed.
SNMPv1/v2 Settings	
Get Community	Enter the name of Get Community. Get Community is used to read data from the access point and not for writing data into the access point. Get Community includes 1 to 32 characters. Special characters are allowed.
Set Community	Enter the name of Set Community. Set Community is used to write data into the access point. The Set Community includes 1 to 32 characters. Special characters are allowed.
SNMPv3 Settings	
SNMPv3 Settings	Configure the SNMPv3 settings if you want to use SNMPv3. Username: Enter the username. It includes 0 to 32 characters. Special characters are allowed. Authentication Protocol: None or HMAC-MD5. Authentication Key: 8 to 32 characters. Special characters are allowed. Privacy Protocol: None or CBC-DES. Privacy Key: 8 to 32 characters. Special characters are allowed.
Access Control	
Access Control	When SNMP is enabled, any IP address can connect to the access point's admin page through SNMP. You can enable access control to allow specified IP addresses. Two IPv4 and two IPv6 addresses can be specified.
SNMP Trap	
Trap Community	Enter the Trap Community server. It includes 1 to 32 characters. Special characters are allowed.
Trap Destination	Two Trap Community servers are supported: can be IPv4 or IPv6.

SSL Certificate

This screen can be used to manage SSL certificate used by HTTPS.

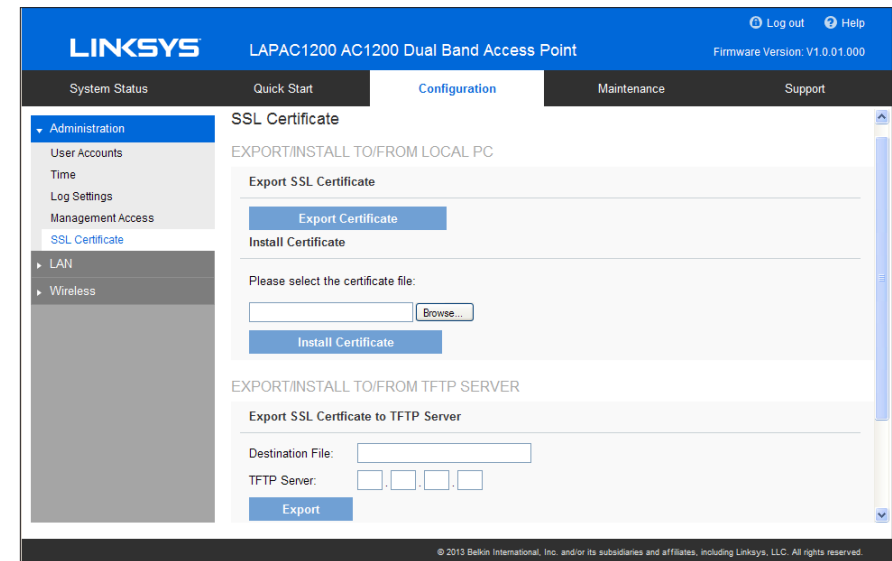


Figure 13: SSL Certificate Screen

Data - SSL Certificate Screen

Export/Restore to/from Local PC	
Export SSL Certificate	Click to export the SSL certificate.
Install Certificate	Browse to choose the certificate file. Click Install Certificate button.
Export to TFTP Server	
Destination File	Enter the name of the destination file.
TFTP Server	Enter the IPv4 address for the TFTP server.
Export	Click to export the SSL certificate to the TFTP server.
Restore from TFTP Server	
Source File	Enter the name of the source file.
TFTP Server	Enter the IPv4 address for the TFTP server.
Install	Click to install the file to the device.

Network Setup Screen

Use this screen to configure basic device settings, VLAN settings and settings for the LAN interface, including static or dynamic IPv4/IPv6 address assignment.

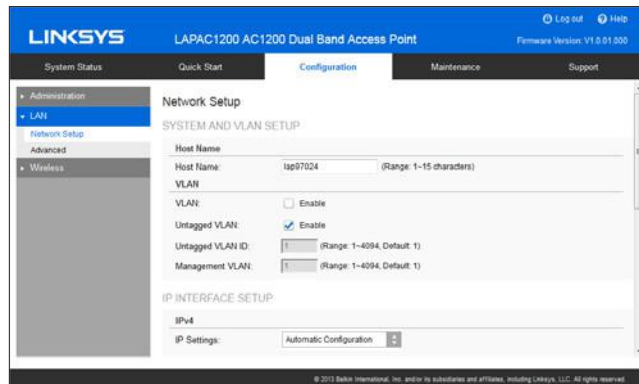


Figure 14: Network Setup Screen

Data - Network Setup Screen

TCP/IP	
Host Name	Assign a host name to this access point. Host name consists of 1 to 15 characters. Valid characters include A-Z, a-z, 0-9 and -. Character cannot be first and last character of hostname and hostname cannot be composed of all digits.
VLAN	Enables or disables VLAN function. Workgroup Bridge can only be enabled when VLAN function is disabled.
Untagged VLAN	Enables or disables VLAN tagging. If enabled (default), traffic is untagged when VLAN ID is equal to Untagged VLAN ID and un-tagged traffic can be accepted by LAN port. If disabled, traffic from the LAN port is always tagged and only tagged traffic can be accepted from LAN port. By default all traffic on the access point uses VLAN 1, the default untagged VLAN.
Untagged VLAN ID	Specifies a number between 1 and 4094 for the untagged VLAN ID. The default is 1. Traffic on the VLAN that you specify in this field is not be tagged with a VLAN ID when forwarded to the network. Untagged VLAN ID field is active only when untagged VLAN is enabled. VLAN 1 is the default for untagged VLAN.
Management VLAN	The VLAN associated with the IP address you use to connect to the access point. Provide a number between 1 and 4094 for the Management VLAN ID. The default is 1.
IPv4/v6	
IP Settings	Select Automatic Configuration or Static IP Address.
IP Address	Enter an unused IP address from the address range used on your LAN.
Subnet Mask	Enter the subnet mask for the IP address above.
Default Gateway	Enter the gateway for the IP address above.
Primary DNS	Enter the DNS address.
Secondary DNS	Optional. If entered, this DNS will be used if the Primary DNS does not respond.

Advanced Screen

Use this screen to configure advanced network settings of the access point.

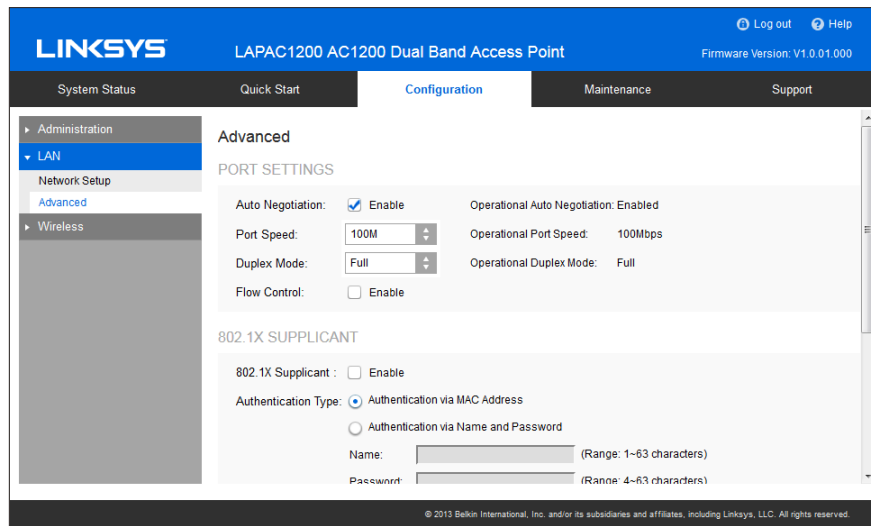


Figure 15: Advanced Screen

Data - Advanced Screen

Port Settings	
Auto Negotiation	If enabled, Port Speed and Duplex Mode will become grey and cannot be configured. If disabled, Port Speed and Duplex Mode can be configured.
Operational Auto Negotiation	Current Auto Negotiation mode of the Ethernet port.
Port Speed	Select the speed of the Ethernet port. Available only when Auto Negotiation is disabled. The option can be 10M, 100M or 1000M (default).
Operational Port Speed	Displays the current port speed of the Ethernet port.
Duplex Mode	Select the duplex mode of the Ethernet port. Available only when Auto Negotiation is disabled. The option can be Half or Full (default).
Operational Duplex Mode	Displays the current duplex mode of the Ethernet port.
Flow Control	Enable or disable flow control of the Ethernet port.
802.1x Supplicant	
802.1x Supplicant	Enable if your network requires this access point to use 802.1X authentication in order to operate.
Authentication	This feature supports following two kinds of authentication: <p>Authentication via MAC Address</p> Select this if you want to use MAC address for authentication. The access point uses lowercase MAC address for Name and Password, like xxxxxxxxxxxx. <p>Authentication via Name and Password</p> Select this if you want to use name and password for authentication. <p>Name - Enter the login name. The name includes 1 to 63 characters. Special characters are allowed.</p> <p>Password - Enter the desired login password. The password includes 4 to 63 characters. Special characters are allowed.</p>

Discovery Settings

Bonjour	Enable if administrator wants the access point to be discovered by Bonjour enabled devices automatically. If VLAN is enabled, the discovery packets will be sent out via management VLAN only. The access point supports http and https services.
LLDP	Enable if administrator wants the access point to be discovered by switch by LLDP protocol. Information such as product name, device name, firmware version, IP address, MAC address and so on will be advertised.
LLDP-MED	Enable if administrator wants the access point to be discovered by switch by LLDP-MED protocol. Information such as product name, device name, firmware version, IP address, MAC address and so on will be advertised.

Wireless Screens

There are ten configuration screens:

- Basic Settings
- Security
- Rogue AP Detection
- Scheduler
- Scheduler Association
- Connection Control
- Rate Limit
- QoS
- Workgroup Bridge
- Advanced Settings

Basic Settings

Basic Settings provides the essential configuration for your wireless radio and SSIDs. You should be able to set up your wireless network with these essential parameters configured. Advanced wireless settings such as Band Steering, Channel Bandwidth, etc., will be on Configuration → Wireless → Advanced Settings screen.

Click *Basic Settings* on the Wireless menu.

The screenshot shows the Linksys configuration page for a LAPAC1200 AC1200 Dual Band Access Point. The page is titled "Basic Wireless Settings" and is part of the "Configuration" section. The left sidebar shows a navigation menu with "Wireless" selected. The main content area includes the following settings:

- Select Your Radio:** Radio 1
- Wireless Radio:** Radio 1
- Radio Settings:**
 - Enable Radio:** Enable
 - Network Mode:** B/G/N-Mixed
 - Wireless Channel:** Auto
- SSID Settings:**

SSID	SSID Name	Enable	Broadcast	Isolation	VLAN	Max Clients
SSID 1	LinksysSMB24G	<input checked="" type="checkbox"/>	<input checked="" type="checkbox"/>	<input type="checkbox"/>	1	0
SSID 2		<input type="checkbox"/>	<input type="checkbox"/>	<input type="checkbox"/>	1	0
SSID 3		<input type="checkbox"/>	<input type="checkbox"/>	<input type="checkbox"/>	1	0

Figure 16: Basic Settings Screen

Data - Wireless Basic Settings Screen

Basic Wireless Settings	
Wireless Radio	Select the wireless radio from the list. Radio 1 is for 2.4 GHz, and Radio 2 is for 5 GHz.
Enable Radio	Enable or disable the wireless radio.
Wireless Mode	Select the desired option for radio 1: G only - allow connection by 802.11G wireless stations only. N only - allow connection by 802.11N wireless stations only. B/G-Mixed - allow connection by 802.11B and G wireless stations only. B/G/N-Mixed (Default) - allow connections by 802.11N, 802.11B and 802.11G wireless stations. Select the desired option for radio 2: N/A-Mixed - allow connection by 802.11A and N wireless stations only. N only - allow connection by 802.11N wireless stations only. AC only - allow connection by 802.11AC wireless stations only. A/N/AC-Mixed - allow connection by 802.11A, 802.11N and 802.11AC wireless stations.
Wireless Channel	Select wireless channel of the radio. If Auto is selected, the access point will select the best available channel when device boots up. If you experience lost connections and/or slow data transfers, experiment with manually setting different channels to see which is the best.
SSID Settings	
SSID Name	Enter the desired SSID Name. Each SSID must have a unique name. The name includes 1 to 32 characters.
Broadcast	Enable or disable the broadcast of the SSID. When the access point does not broadcast its SSID, the network name is not shown in the list of available networks on a client station. Instead, you must enter the exact network name manually into the wireless connection utility on the client so that it can connect.

Isolation	Enable or disable isolation among clients of the SSID. If enabled, wireless clients cannot communicate with others in the same SSID. Disabled by default.
VLAN ID	Enter the VLAN ID of the SSID. Used to tag packets which are received from the wireless clients of the SSID and sent from Ethernet or Workgroup Bridge interfaces. Applicable only when VLAN function is enabled. VLAN function can be configured in Configuration → LAN → Network Setup screen.
Max Clients	Enter the number of clients that can connect to the SSID. The range is from 0 to 32, and 0 means no limit.

Security Settings

Use this screen to configure security settings of SSIDs to provide data protection over the wireless network.

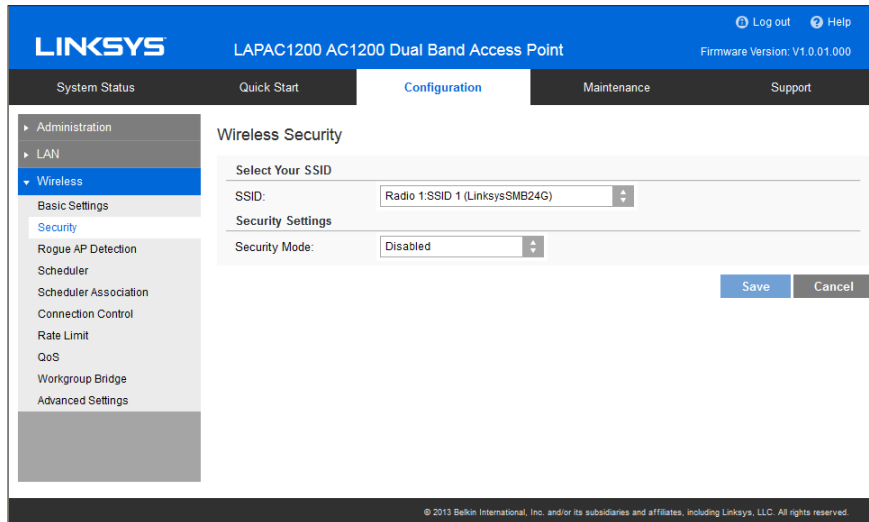


Figure 17: Security Settings

Data - Wireless Basic Settings Screen

Security	
Select SSID	Select the desired SSID from the drop-down list.
Security Mode	Select the desired security method from the list.

Security Settings

- **Disabled** - No security. Anyone using the correct SSID can connect to your network.
- **WEP** - The 802.11b standard. Data is encrypted before transmission, but the encryption system is not very strong.
- **WPA2-Personal** - This is a further development of WPA-PSK, and offers even greater security, using the AES (Advanced Encryption Standard) method. This method, sometimes called Mixed Mode, allows clients to use either WPA-Personal (with TKIP) or WPA2-Personal (with AES).

- **WPA2-Enterprise** - Requires a RADIUS Server on your LAN to provide the client authentication according to the 802.1x standard. Data transmissions are encrypted using the WPA2 standard.

If this option is selected:

- This access point must have a client login on the RADIUS Server.
 - Each user must authenticate on the RADIUS Server. This is usually done using digital certificates.
 - Each user's wireless client must support 802.1x and provide the RADIUS authentication data when required.
 - All data transmission is encrypted using the WPA2 standard. Keys are automatically generated, so no key input is required.
- **RADIUS** - RADIUS mode utilizes RADIUS server for authentication and dynamic WEP key generation for data encryption.

Security Settings - WEP

This is the 802.11b standard. Data is encrypted before transmission, but the encryption system is not very strong.

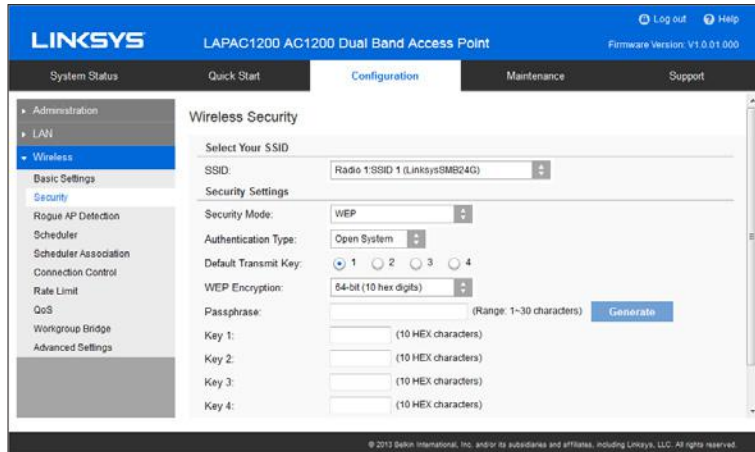


Figure 18: WEP Wireless Security Screen

Data - WEP Screen

WEP	
Authentication	Select Open System or Shared Key. All wireless stations must use the same method.
Default Transmit Key	Select a transmit key.
WEP Encryption	Select an encryption option, and ensure your wireless stations have the same setting: 64-Bit Encryption - Keys are 10 Hex characters. 128-Bit Encryption - Keys are 26 Hex characters.
Passphrase	Generate a key or keys instead of entering them directly. Enter a word or group of printable characters in the Passphrase box and click the Generate button to automatically configure the WEP key. It consists of 1 to 30 characters.
Key Value	Enter a key in hexadecimal format.

Security Settings - WPA2-Personal

This is a further development of WPA-Personal, and offers even greater security.

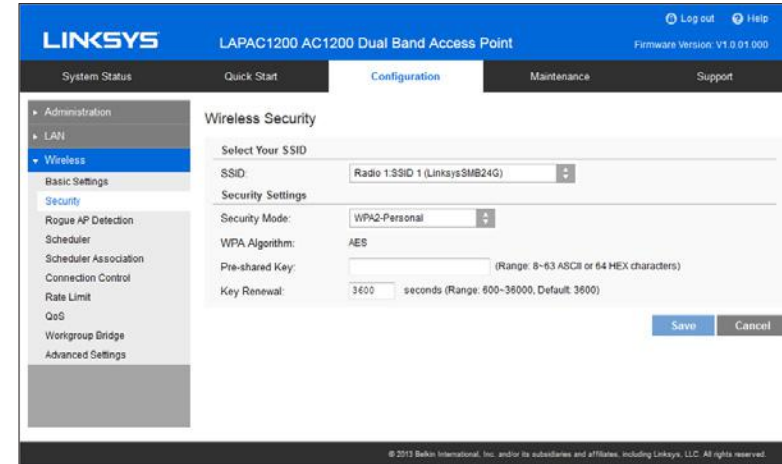


Figure 19: WPA2-Personal Wireless Security Screen

Data - WPA2-Personal Screen

WPA2-Personal	
WPA Algorithm	The encryption method is AES. Wireless stations must also use AES.
Pre-shared Key	Enter the key value. It is 8 to 63 ASCII characters or 64 HEX characters. Other wireless stations must use the same key.
Key Renewal	Specify the value of Group Key Renewal. It's a value from 600 to 36000 and default is 3600 seconds. WPA automatically changes secret keys after a certain period of time. The group key interval is the period of time in between automatic changes of the group key, which all devices on the network share. Constantly keying the group key protects your network against intrusion, as the would-be intruder must cope with an ever-changing secret key.

Security Settings - WPA/WPA2-Personal

This method, sometimes called Mixed Mode, allows clients to use either WPA-Personal or WPA2-Personal.

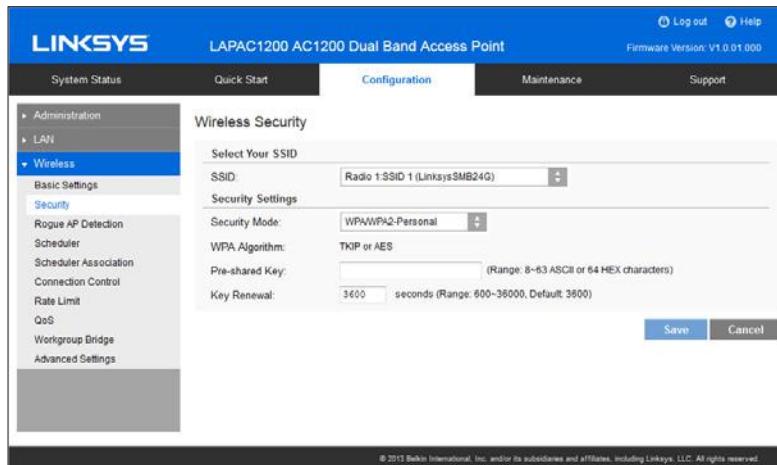


Figure 20: WPA/WPA2-Personal Wireless Security Screen

Data - WPA/WPA2-Personal Screen

WPA/WPA2-Personal	
WPA Algorithm	The encryption method is TKIP or AES.
Pre-shared Key	Enter the key value. It is 8 to 63 ASCII characters or 64 HEX characters. Other wireless stations must use the same key.
Key Renewal	Specify the value of Group Key Renewal. It's a value from 600 to 36000, and default is 3600 seconds. WPA automatically changes secret keys after a certain period of time. The group key interval is the period of time in between automatic changes of the group key, which all devices on the network share. Constantly keying the group key protects your network against intrusion, as the would-be intruder must cope with an ever-changing secret key.

Security Settings - WPA2-Enterprise

This version of WPA2-Enterprise requires a RADIUS Server on your LAN to provide the client authentication. Data transmissions are encrypted using the WPA2 standard.

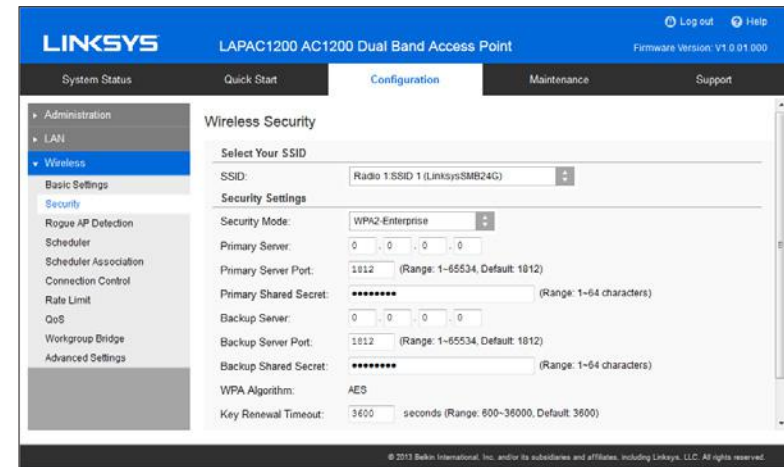


Figure 21: WPA2-Enterprise Wireless Security Screen

Data - WPA2-Enterprise Screen

WPA2-Enterprise	
Primary Server	Enter the IP address of the RADIUS Server on your network.
Primary Server Port	Enter the port number used for connections to the RADIUS Server. It is a value from 1 to 65534, and default is 1812.
Primary Shared Secret	Enter the key value to match the RADIUS Server. It consists of 1 to 64 characters.
Backup Server	The Backup Authentication Server will be used when the Primary Authentication Server is not available.
Backup Server Port	Enter the port number used for connections to the Backup RADIUS Server. It's a value from 1 to 65534, and default is 1812.
Backup Shared Secret	Enter the key value to match the Backup RADIUS Server. It consists of 1 to 64 characters.
WPA Algorithm	The encryption method is AES.
Key Renewal Timeout	Specify the value of Group Key Renewal. It is a value from 600 to 36000, and default is 3600 seconds. WPA automatically changes secret keys after a certain period of time. The group key interval is the period of time in between automatic changes of the group key, which all devices on the network share. Constantly keying the group key protects your network against intrusion, as the would-be intruder must cope with an ever-changing secret key.

Security Settings - WPA/WPA2-Enterprise

WPA/WPA2-Enterprise requires a RADIUS Server on your LAN to provide the client authentication. Data transmissions are encrypted using WPA2 standard.

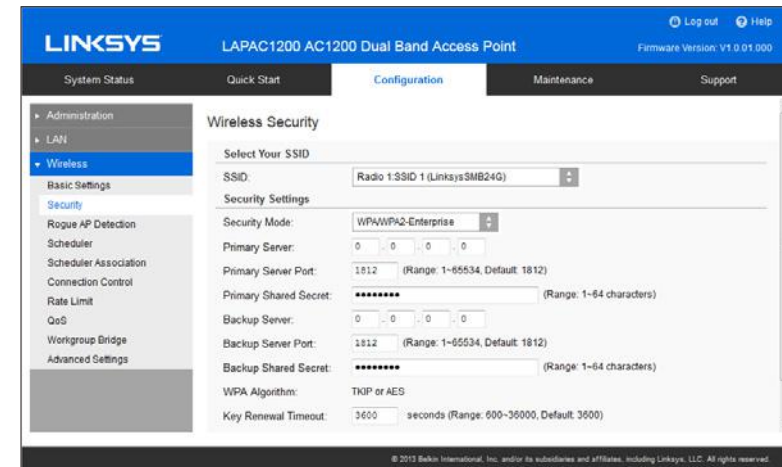


Figure 22: WPA/WPA2-Enterprise Wireless Security Screen

Data - WPA/WPA2-Enterprise Screen

WPA/WPA2-Enterprise	
Primary Server	Enter the IP address of the RADIUS Server on your network.
Primary Server Port	Enter the port number used for connections to the RADIUS Server. It is a value from 1 to 65534, and default is 1812.
Primary Shared Secret	Enter the key value to match the RADIUS Server. It consists of 1 to 64 characters.
Backup Server	The Backup Authentication Server will be used when the Primary Authentication Server is not available.
Backup Server Port	Enter the port number used for connections to the Backup RADIUS Server. It is a value from 1 to 65534, and default is 1812.
Backup Shared Secret	Enter the key value to match the Backup RADIUS Server. It consists of 1 to 64 characters.
WPA Algorithm	The encryption method is TKIP or AES.
Key Renewal Timeout	Specify the value of Group Key Renewal. It is a value from 600 to 36000, and default is 3600 seconds. WPA automatically changes secret keys after a certain period of time. The group key interval is the period of time between automatic changes of the group key, which all devices on the network share. Constantly keying the group key protects your network against intrusion, as the would-be intruder must cope with an ever-changing secret key.

RADIUS

Use RADIUS server for authentication and dynamic WEP key generation for data encryption.

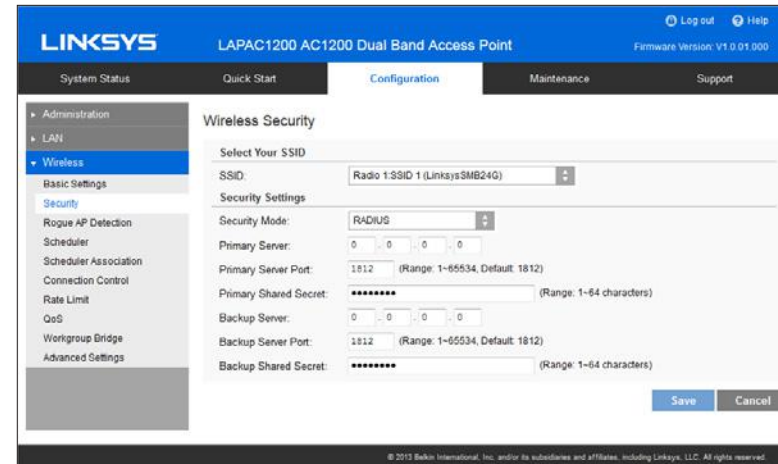


Figure 23: RADIUS Settings

Data - RADIUS Screen

Authentication Server	
Primary Server	Enter the IP address of the RADIUS Server on your network.
Primary Server Port	Enter the port number used for connections to the RADIUS Server. It is a value from 1 to 65534, and default is 1812.
Primary Shared Secret	Enter the key value to match the RADIUS Server. It consists of 1 to 64 characters.
Backup Server	The Backup Authentication Server will be used when the Primary Authentication Server is not available.
Backup Server Port	Enter the port number used for connections to the Backup RADIUS Server. It is a value from 1 to 65534, and default is 1812.
Backup Shared Secret	Enter the key value to match the Backup RADIUS Server. It consists of 1 to 64 characters.

Rogue AP Detection

Rogue AP detection is used to detect the unexpected or unauthorized access point installed in a secure network environment.

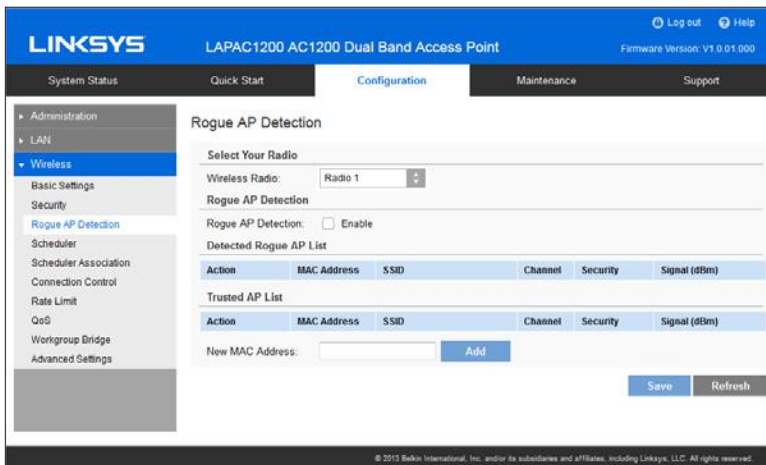


Figure 24: Rogue AP Screen

Data - Rogue AP Screen

Wireless Radio	Select the desired radio from the list. Radio 1 is for 2.4 GHz, and Radio 2 is for 5 GHz.
Rogue AP	Enable or disable Rogue AP Detection on the selected radio.
Detected Rogue AP List	
Action	Click Trust to move the AP to the Trusted AP List.
MAC Address	The MAC address of the Rogue AP.
SSID	The SSID of the Rogue AP.
Channel	The channel of the Rogue AP.
Security	The security method of the Rogue AP.
Signal	The signal level of the Rogue AP.
Trusted AP List	
Action	Click Untrust to move the AP to the Rogue AP List.
MAC Address	The MAC address of the Trusted AP.
SSID	The SSID of the Trusted AP.
Channel	The channel of the Trusted AP.
Security	The security method of the Trusted AP.
Signal	The signal level of the Trusted AP.
New MAC Address	Add one trusted AP by MAC address.

Scheduler

Configure a rule with a specific time interval for SSIDs to be operational. Automate enabling or disabling SSIDs based on the profile definition. Support up to 16 profiles and each profile can include four time rules.

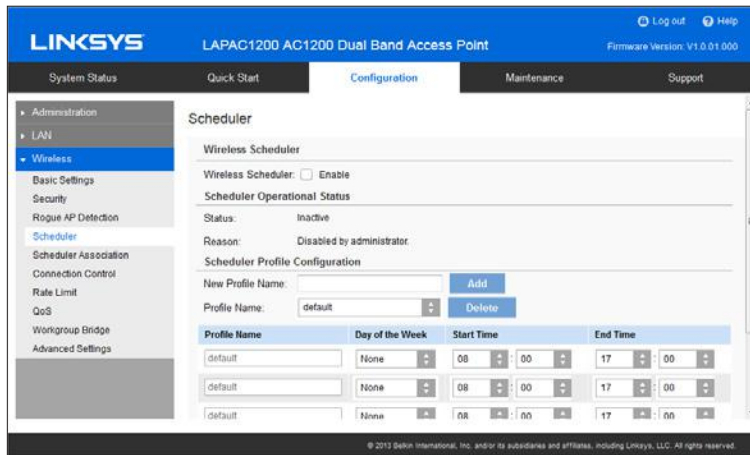


Figure 25: Scheduler Screen

Data - Scheduler Screen

Wireless Scheduler	Enable or disable wireless scheduler. If disabled, even if some SSIDs are associated with profiles, they will be always active.
Scheduler Operational Status	
Status	The operational status of the scheduler.
Reason	The detailed reason for the scheduler operational status. It includes the following situations. <ul style="list-style-type: none"> System time is outdated. Scheduler is inactive because system time is outdated. Administrative Mode is disabled. Scheduler is disabled by administrator. Active Scheduler is active.
Scheduler Profile Configuration	
New Profile Name	Enter the name for new profile.
Profile Name	Select the desired profile from the list to configure.
Day of the Week	Select the desired day from the list. Option "None" means this time rule is disabled.
Start Time	Choose the start time.
Finish Time	Choose the finish time.

Scheduler Association

Associate defined scheduler profiles with SSIDs.

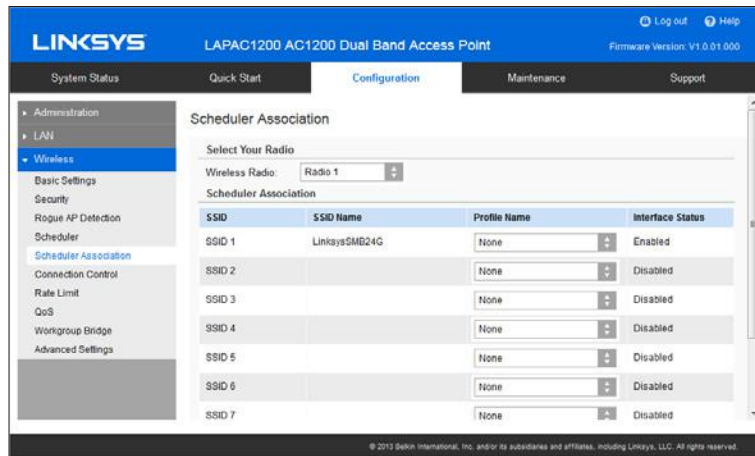


Figure 26: Scheduler Association Screen

Connection Control

Exclude or allow only listed client stations to authenticate with the access point.

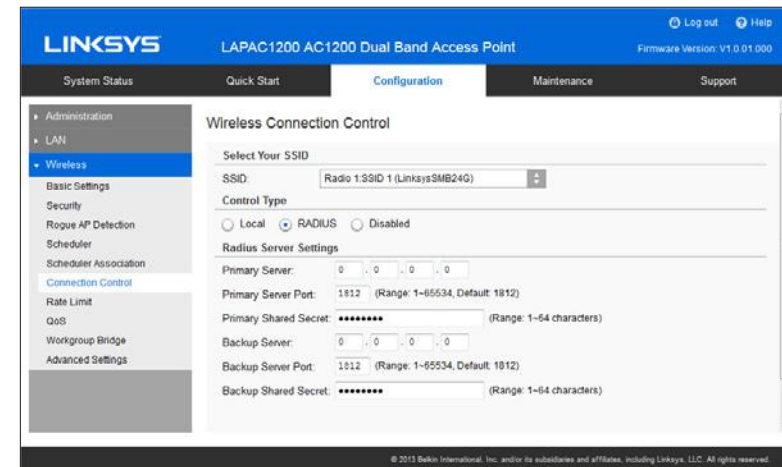


Figure 27: Connection Control Screen

Data - Scheduler Association Screen

Wireless Radio	Select the desired radio from the list. Radio 1 is for 2.4 GHz, and Radio 2 is for 5 GHz.
Scheduler Association	
SSID	The index of SSID.
SSID Name	The name of the SSID.
Profile Name	Choose the profile that is associated with the SSID. If the profile associated with the SSID is deleted, then the association will be removed. Option "None" means no scheduler profile is associated.
Interface Status	The status of the SSID. It can be Enabled or Disabled. Scheduler only works when the SSID is enabled.

Data - Connection Control Screen

SSID	Select the desired SSID from the list.
Control Type	Select the option from the drop-down list as desired. Local <ul style="list-style-type: none"> Choose either "Allow only following MAC addresses to connect to wireless network" or "Prevent following MAC addresses from connection to wireless network." You can enter up to 20 MAC addresses of wireless stations or choose the MAC address. RADIUS <ul style="list-style-type: none"> Primary/Backup RADIUS Server - Enter the IP address of the RADIUS Server. Primary/Backup RADIUS Server Port - Enter the Port number of the RADIUS Server. Primary/Backup Shared Secret - This is shared between the wireless access point and the RADIUS Server while authenticating the device attempting to connect. Disabled

Rate Limit

Limit downstream and upstream rate of SSIDs.

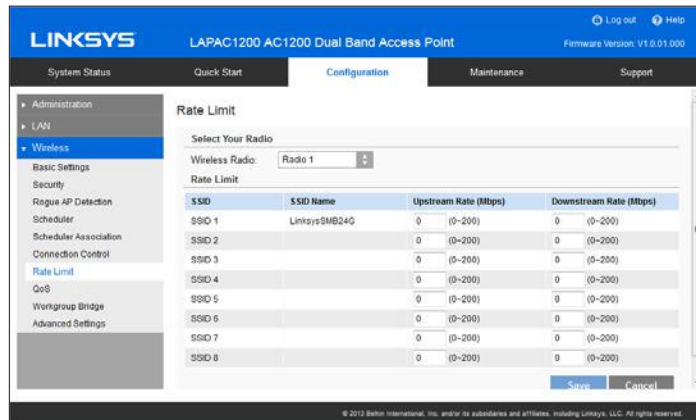


Figure 28: Rate Limit Screen

Data - Rate Limit Screen

Wireless Radio	Select the desired radio from the list. Radio 1 is for 2.4 GHz, and Radio 2 is for 5 GHz.
Rate Limit	
SSID	The index of SSID.
SSID Name	The name of the SSID.
Upstream Rate	Enter a maximum upstream rate for the SSID. The range is from 0 to 200 Mbps* for Radio 1 and from 0 to 600 Mbps* for Radio 2; 0 means no limitation.
Downstream Rate	Enter a maximum downstream rate for the SSID. The range is from 0 to 200 Mbps* for Radio 1 and from 0 to 600 Mbps* for Radio 2; 0 means no limitation.

*Maximum Performance derived from IEEE Standard 802.11 specifications (draft specifications for 802.11ac). Actual performance can vary, including lower wireless network capacity, data throughput rate, range and coverage. Performance depends upon many factors, conditions and variables, including products used, interference and other adverse conditions. 802.11ac 1300 Mbps in the 5GHz Band is approximately 3 x faster than 802.11n 450 Mbps in the 2.4GHz Band. An 802.11ac adapter will be needed to achieve 11ac data rates and up to 1300 Mbps wireless speeds may be achieved when connecting to other 802.11ac 1300 Mbps devices.

QoS

The QoS (Quality of Service) feature allows you to specify priorities for different traffic coming from your wireless client. Lower priority traffic will be slowed down to allow greater throughput or less delay for high priority traffic.

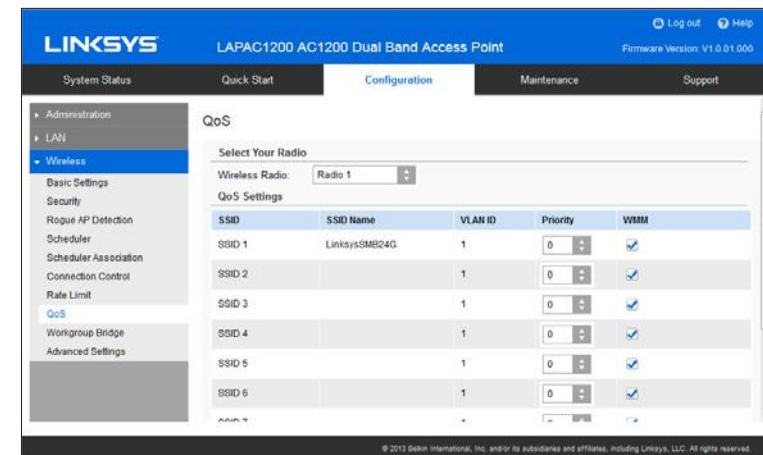


Figure 29: QoS Screen

Data - QoS Screen

QoS Setting	
Wireless Radio	Select the desired radio from the list. Radio 1 is for 2.4 GHz, and Radio 2 is for 5 GHz.
QoS Settings	
SSID	The index of SSID.
SSID Name	The name of the SSID.
VLAN ID	The VLAN ID of the SSID.
Priority	Select the priority level from the list. VLAN must be enabled in order to set priority. The 802.1p will be included in the VLAN header of the packets which are received from the SSID and sent from Ethernet interface.
WMM	Enable or disable WMM. WMM (Wi-Fi Multimedia) is a component of the IEEE 802.11e wireless LAN standard for QoS. WMM provides prioritization of wireless data packets from different applications based on four access categories: voice, video, best effort, and background. For an application to receive the benefits of WMM QoS, both it and the client running that application have to have WMM enabled. Legacy applications that do not support WMM and applications that do not require QoS, are assigned to the best effort category, which receives a lower priority than voice and video. WMM is enabled by default.

Workgroup Bridge

Workgroup Bridge feature enables the access point to extend the accessibility of a remote network. In Workgroup Bridge mode, the access point acts as a wireless station (STA) on the wireless LAN. It can bridge traffic between a remote wired network and a wireless LAN.

When Workgroup Bridge is enabled, SSID configuration still works to provide wireless services to clients.

All access points participating in Workgroup Bridge must have the identical settings for Radio interface, IEEE 802.11 mode, Channel Bandwidth, Channel (Auto is not recommended).

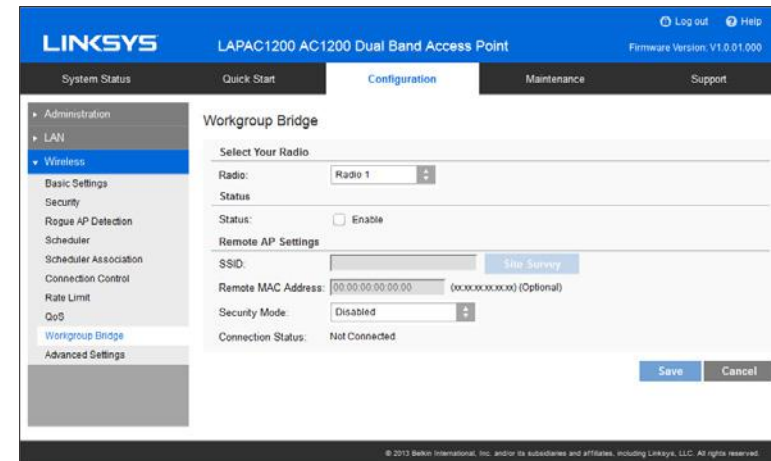


Figure 30: Workgroup Bridge

Data - Workgroup Bridge Screen

Workgroup Bridge	
Radio	Select the desired radio from the list.
Workgroup Bridge Status	
Status	<p>Enable or disable Workgroup Bridge function. Workgroup Bridge can only be enabled when VLAN function is disabled.</p> <p>Before configuring Workgroup Bridge, make sure all devices in Workgroup Bridge have the following identical settings.</p> <p>Radio</p> <p>IEEE 802.11 Mode</p> <p>Channel Bandwidth</p> <p>Channel (Auto is not recommended)</p>
Infrastructure Client Interface	
SSID	Enter the name of the SSID to which Workgroup Bridge will connect or click Site Survey button to choose from the list. You must do this for Workgroup Bridge to connect to a remote access point.
Remote MAC Address	<p>Normally, Workgroup Bridge connects to a remote access point by matching SSID. When multiple remote access points has the same SSID, Workgroup Bridge can connect to different remote access points.</p> <p>Optional: You can specify the MAC address of the remote access point to limit Workgroup Bridge's connection to a specific remote access point. The format is xx:xx:xx:xx:xx:xx.</p>
Security Mode	Select the desired mode from the list. Disabled WPA-Personal WPA2-Personal

Advanced Settings

Configure advanced parameters of the wireless radios.

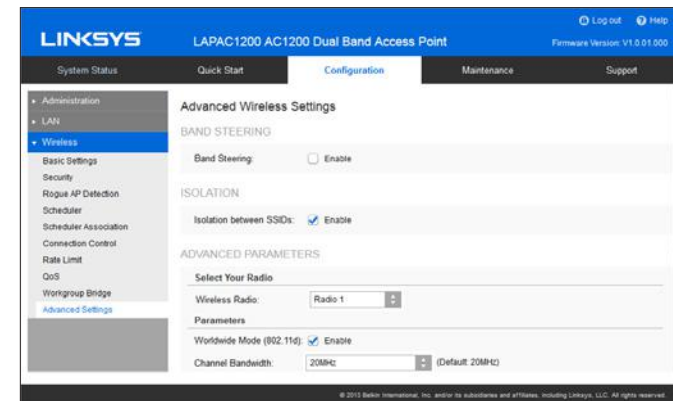


Figure 31: Advanced Settings

Data - Advanced Settings Screen

Band Steering	
Band Steering	<p>Enable or disable Band Steering function.</p> <p>Band Steering is a technology that detects whether the wireless client is dual-band capable. If it is, band steering pushes the client to connect to the less-congested 5 GHz network. It does this by actively blocking the client's attempts to connect with the 2.4GHz network.</p>
Isolation	
Isolation between SSIDs	<p>Define whether to isolate traffic between SSIDs. If enabled, wireless clients in different SSIDs cannot communicate with each other. Enabled by default.</p>
Advanced Parameters	
Wireless Radio	<p>Select the desired radio from the list.</p> <p>Radio 1 is for 2.4 GHz, and Radio 2 is for 5 GHz.</p>
Worldwide Mode (802.11d)	<p>Worldwide Mode (802.11d) enables the access point to direct connected wireless devices to radio settings specific to where in the world the devices are in use.</p>
Channel Bandwidth	<p>Select the designed channel bandwidth for the wireless radio.</p> <ul style="list-style-type: none"> • 20MHz - Select if you are not using any 802.11n wireless devices. • 20/40MHz - Select if you are using both 802.11n and non-802.11n wireless devices. • 20/40/80MHz - Select if you are using 802.11ac, 802.11n and non-802.11n wireless devices.
Guard Interval	<p>Select the guard interval manually for Wireless-N connections. The two options are Short (400 nanoseconds) and Long (800 nanoseconds). The default is Auto.</p>

CTS Protection Mode	<p>CTS (Clear-To-Send) Protection Mode boosts the access point's ability to catch all Wireless-G transmissions, but it severely decreases performance. By default, CTS Protection Mode is disabled, but the access point will automatically enable this feature when Wireless-G devices are not able to transmit to the access point in an environment with heavy 802.11b traffic.</p>
Beacon Interval	<p>The access point transmits beacon frames at regular intervals to announce the existence of the wireless network. Enter the interval between the transmissions of beacon frames. The value range is between 40 and 1000 milliseconds and default is 100 milliseconds.</p>
DTIM Interval	<p>Enter the Delivery Traffic Information Map (DTIM) period, an integer from 1 to 255 beacons. The default is 1 beacon.</p> <p>The DTIM message is an element included in some beacon frames. It indicates which client stations, currently sleeping in low-power mode, have data buffered on the access point awaiting pickup.</p> <p>The DTIM period that you specify indicates how often the clients served by this WAP device should check for buffered data still on the access point awaiting pickup. For example, if you enter 1, clients check for buffered data on the access point at every beacon. If you enter 10, clients check on every 10th beacon.</p>

RTS Threshold	<p>Enter the Request to Send (RTS) Threshold value, an integer from 1 to 2347. The default is 2347 octets.</p> <p>The RTS threshold indicates the number of octets in a Medium Access Control Protocol Data Unit (MPDU) below which an RTS/CTS handshake is not performed.</p> <p>Changing the RTS threshold can help control traffic flow through the access point, especially one with a lot of clients. If you specify a low threshold value, RTS packets are sent more frequently, which consumes more bandwidth and reduces the throughput of the packet. However, sending more RTS packets can help the network recover from interference or collisions that might occur on a busy network, or on a network experiencing electromagnetic interference.</p>
Fragmentation Threshold	<p>Enter the fragmentation threshold, an integer from 256 to 2346. The default is 2346.</p> <p>The fragmentation threshold is a way of limiting the size of packets (frames) transmitted over the network. If a packet exceeds the fragmentation threshold you set, the fragmentation function is activated and the packet is sent as multiple 802.11 frames.</p> <p>If the packet being transmitted is equal to or less than the threshold, fragmentation is not used. Setting the threshold to the largest value (2,346 bytes, which is the default) effectively disables fragmentation.</p> <p>Fragmentation involves more overhead because of the extra work of dividing up and reassembling of frames it requires, and because it increases message traffic on the network. However, fragmentation can help improve network performance and reliability if properly configured.</p>
Output Power	<p>Select the output power of the access point. If many access points exist, lower power can reduce the signal interference among them.</p>

Chapter 3 Operation and Status

Operation

You may need to perform the following operations on a regular basis.

- If using the Access Control feature, update the Trusted AP database as required. (See Access Control in Chapter 2 for details.)
- If using 802.1x mode, update the User Login data on the Windows 2000 Server, and configure the client PCs, as required.

System Summary

Provides system status of the access point.

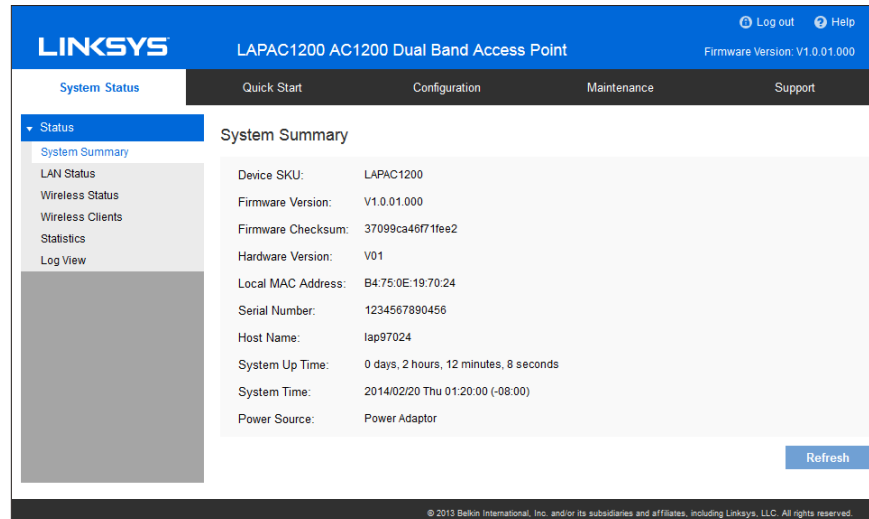


Figure 32: System Summary Screen

Data - System Summary Screen

System Summary	
Device SKU	The SKU is often used to identify device model number and region.
Firmware Version	The version of the firmware currently installed.
Firmware Checksum	The checksum of the firmware running in the access point.
Hardware Version	The version of the hardware.
Local MAC Address	The MAC (physical) address of the wireless access point.
Serial Number	The serial number of the device.
Host Name	The host name assigned to the access point.
System Up Time	How long the system has been running since the last restart or reboot.
System Time	The current date and time.
Power Source	The power source of the access point. It can be Power over Ethernet (PoE) or Power Adaptor. When two power sources are plugged in, PoE has higher precedence.
Buttons	
Refresh	Click to update the data on the screen.

LAN Status

LAN Status displays settings, and status of LAN interface.



Figure 33: LAN Status Screen

Data - LAN Status

VLAN	
VLAN	Enabled or disabled (default).
Untagged VLAN	<p>Enabled (default) or disabled.</p> <p>When enabled, and if its VLAN ID is equal to Untagged VLAN ID, all traffic is untagged when sent from LAN ports. Untagged traffic can be accepted by LAN ports. If disabled, traffic is always tagged when sent from LAN port and only tagged traffic can be accept from LAN port.</p> <p>By default all traffic on the access point uses VLAN 1, the default untagged VLAN.</p>

Untagged VLAN ID	Displays the untagged VLAN ID. Traffic on the VLAN that you specify in this field is not be tagged with a VLAN ID when forwarded to the network. VLAN 1 is the default ID for untagged VLAN.
Management VLAN	<p>Displays the Management VLAN ID. The VLAN associated with the IP address you use to connect to the access point. Provide a number between 1 and 4094 for the Management VLAN ID. The default is 1.</p> <p>This VLAN is also the default untagged VLAN. If you already have a management VLAN configured on your network with a different VLAN ID, you must change the VLAN ID of the management VLAN on the access point.</p>
IPv4/v6	
IP Address	The IP address of the wireless access point.
Subnet Mask	The Network Mask (Subnet Mask) for the IP address above.
Default Gateway	Enter the gateway for the LAN segment to which the wireless access point is attached (the same value as the PCs on that LAN segment).
Primary DNS	The primary DNS address provided by the DHCP server or configured manually.
Secondary DNS	The secondary DNS address provided by the DHCP server or configured manually.

Wireless Status

Wireless Status displays settings and status of wireless radios and SSIDs.

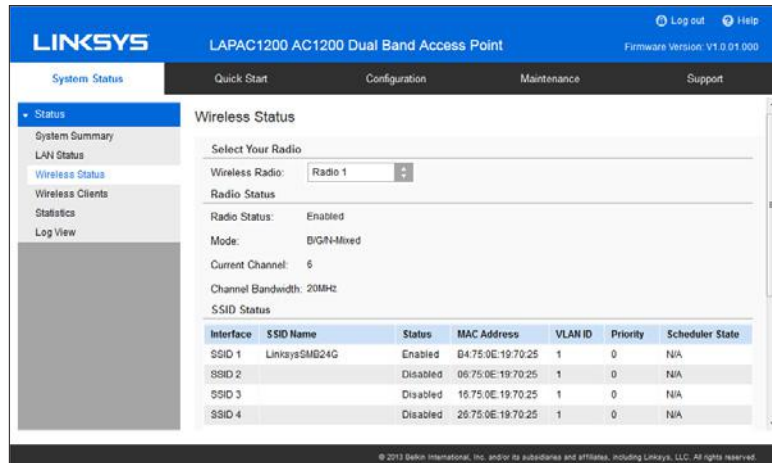


Figure 34: Wireless Status Screen

Data - Wireless Status

Radio Status	
Wireless Radio	Select the desired radio from the list. Radio 1 is for 2.4 GHz, and Radio 2 is for 5 GHz.
Radio Status	Indicates whether the radio is enabled.
Mode	Current 802.11 mode (a/b/g/n/ac) of the radio.
Channel	The channel currently in use.
Channel Bandwidth	Current channel bandwidth of the radio.
SSID Status	
Interface	SSID index.
SSID Name	Name of the SSID.

Status	Status of the SSID, enabled or disabled.
MAC Address	MAC address of the SSID.
VLAN ID	VLAN ID of the SSID.
Priority	The 802.1p priority of the SSID.
Scheduler State	Current scheduler status of the SSID. <ul style="list-style-type: none"> • N/A No scheduler is enabled on the SSID, or the SSID is disabled by administrator. • Active The SSID is enabled. • Inactive The SSID is disabled.
Workgroup Bridge Status	
Status	Status of the Workgroup Bridge, enabled or disabled.
Local MAC	MAC address of the Workgroup Bridge.
Remote SSID	SSID of the destination access point on the other end of the Workgroup Bridge link to which data is sent and from which data is received.
Remote MAC	MAC address of the destination access point on the other end of the Workgroup Bridge link to which data is sent and from which data is received.
Connection Status	Status of the Workgroup Bridge, disabled, connected or not connected.

Wireless Clients

Wireless Clients screen displays a list of connected clients based on each wireless interface.

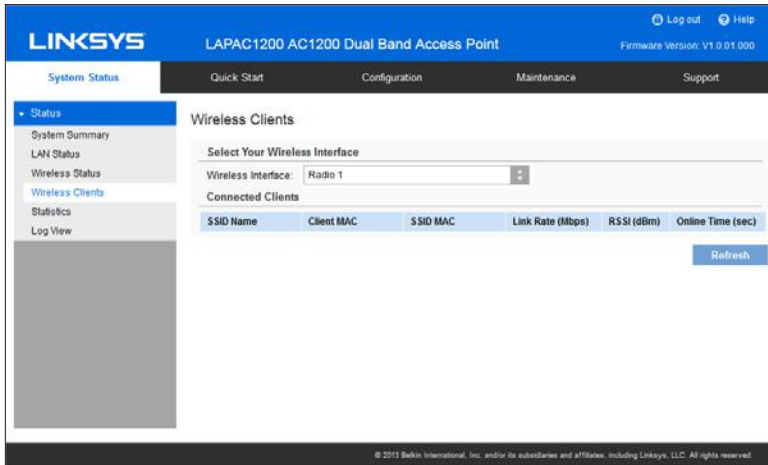


Figure 35: Wireless Clients Screen

Data - Wireless Clients

Wireless Interface	Select the desired interface from the list. The interfaces include 8 SSIDs per radio.
SSID Name	Name of the SSID to which the client connects.
Client MAC	The MAC address of the client.
SSID MAC	MAC of the SSID to which the client connects.
Link Rate	The link rate of the client. Unit is Mbps.
RSSI	The signal strength of the client. Unit is dBm.
Online Time	How long this client has been online. Unit is seconds.

Statistics

Statistics provides real-time transmitted and received statistics data based on each SSID per Radio, and LAN interface.

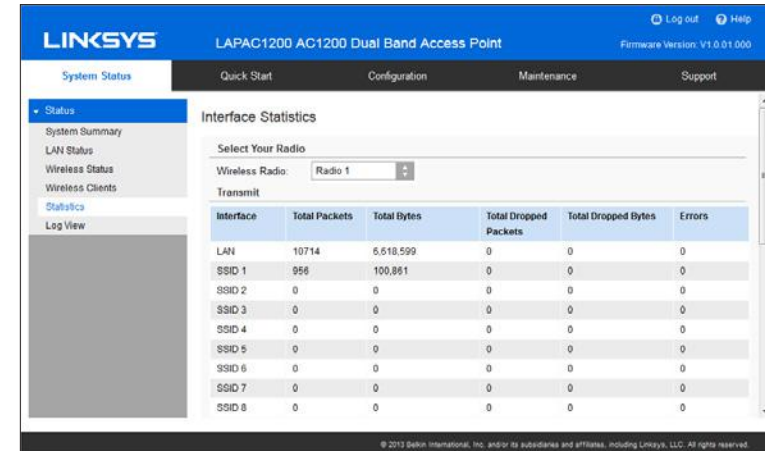


Figure 36: Statistics Screen

Data - Statistics

Wireless Radio	Select the desired radio from the list. Radio 1 is for 2.4 GHz, and Radio 2 is for 5 GHz.
Transmit/Receive	<ul style="list-style-type: none"> Total Packets - The total packets sent (in Transmit table) or received (in Received table) by the interface. Total Bytes - The total bytes sent (in Transmit table) or received (in Received table) by the interface. Total Dropped Packets - The total number of dropped packets sent (in Transmit table) or received (in Received table) by the interface. Total Dropped Bytes - The total number of dropped bytes sent (in Transmit table) or received (in Received table) by the interface. Errors - The total number of errors related to sending and receiving data on this interface.

Log View

Log View shows a list of system events that are generated by each single log entry, such as login attempts and configuration changes.

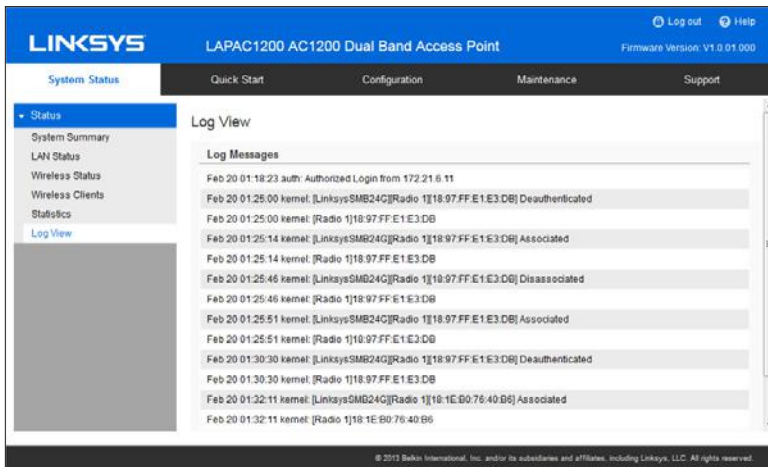


Figure 37: Log View Screen

Data - Log View

Log Messages	
Log Messages	Show the log messages.
Buttons	
Refresh	Update the data on screen.
Save	Save the log to a file on your PC.
Clear	Delete the existing logs from device.

Chapter 4 Access Point Management

Overview

This chapter covers features available on the wireless access point's *Maintenance* menu.

- Maintenance
 - Firmware Upgrade
 - Configuration Backup/Restore
 - Factory Default
 - Reboot
- Diagnostics
 - Ping Test
 - Packet Capture
 - Diagnostic Log

Firmware Upgrade

The firmware (software) in the wireless access point can be upgraded by using HTTP/HTTPS, or TFTP.

Check Linksys support website (<http://www.linksys.com/business/support>) and download the latest firmware release to your storage such as PC. Then, perform firmware upgrade by following the steps below.

During firmware upgrade, do not power off the device or disconnect the Ethernet cable. Device will reboot automatically after firmware upgrade is completed.

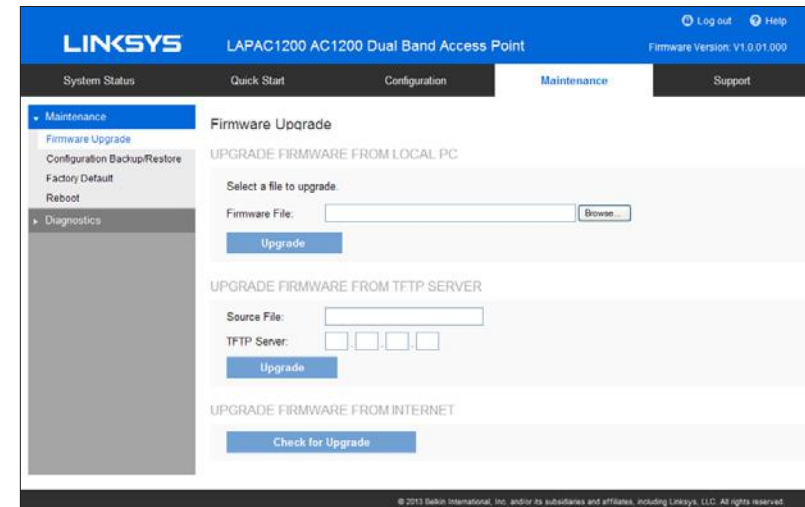


Figure 38: Firmware Upgrade Screen

To perform the firmware upgrade from local PC:

1. Click the **Browse** button and navigate to the location of the upgrade file.
2. Select the upgrade file. Its name will appear in the Upgrade File field.
3. Click the **Upgrade** button to commence the firmware upgrade.

To perform the firmware upgrade from TFTP server:

1. Enter the IPv4 address of the TFTP server and the source file. The source file is the firmware filename you stored in your TFTP server.
2. Click the **Upgrade** to start the firmware upgrade.

To perform a firmware upgrade from the Internet:

1. Click **Check for Upgrade** to see if there is new firmware available.
2. Click the **OK** on the popup dialogue box to start the firmware download and upgrade if a new version of firmware is available.

Configuration Backup/Restore

Configuration backup/restore allows you to download the configuration file from the device to external storage, e.g., your PC, or network storage, or to upload a previously saved configuration file from external storage to the device. It is highly recommended you save one extra copy of the configuration file to external storage after you are done with access point setup.

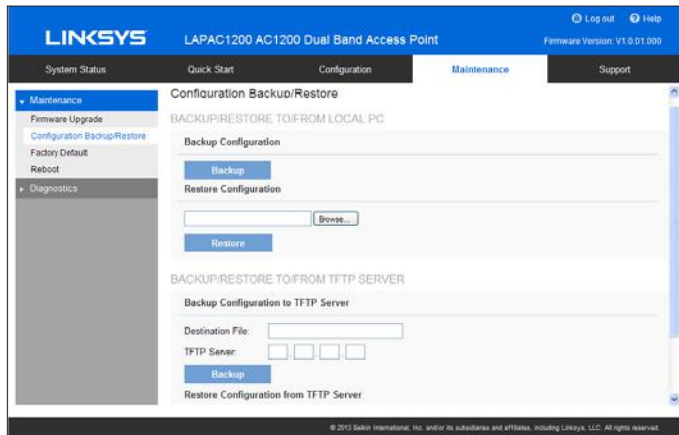


Figure 39: Configuration Backup/Restore Screen

Data - Configuration Backup/Restore Screen

Backup/Restore to/from Local PC	
Backup Configuration	<p>Once you have the access point working properly, you should back up the settings to a file on your computer. You can later restore the access point's settings from this file, if necessary.</p> <p>To create a backup file of the current settings:</p> <ul style="list-style-type: none"> Click Backup. If you don't have your browser set up to save downloaded files automatically, locate where you want to save the file, rename it if you like, and click Save.
Restore Configuration	<p>To restore settings from a backup file:</p> <ul style="list-style-type: none"> Click Browse. Locate and select the previously saved backup file. Click Restore.
Backup/Restore to/from TFTP server	
Backup Configuration	<p>To create a backup file of the current settings:</p> <ul style="list-style-type: none"> Enter the destination file name you plan to save in TFTP server. Enter the IPv4 address for the TFTP server. Click Backup.
Restore Configuration	<p>To restore settings from a backup file:</p> <ul style="list-style-type: none"> Enter the source file name stored in TFTP server. Enter the IPv4 address for the TFTP server. Click Restore.

Factory Default

It's highly recommended you save your current configuration file before you restore to factory default settings. To save your current configuration file, click Maintenance → Configuration Backup/Restore.

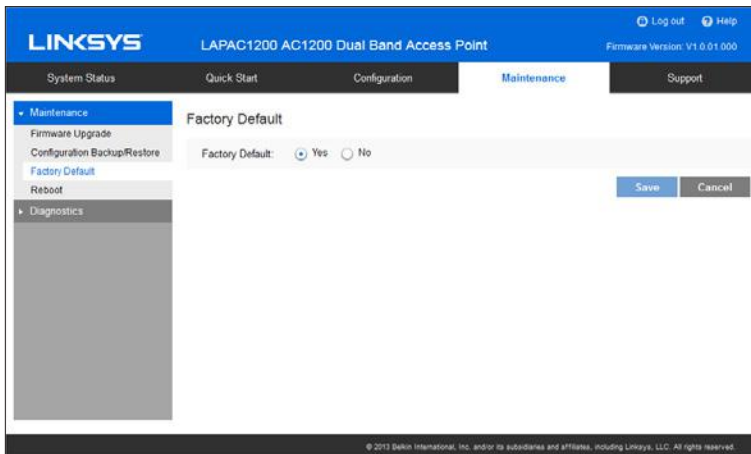


Figure 40: Factory Default Screen

Data - Factory Default Screen

Factory Default	If you click Save when the Yes radio button is selected your current configuration file will be deleted, and the system will reboot. The access point will go back to factory default mode after reboot.
------------------------	---

Reboot

Reboot power cycles the device. The current configuration file will remain after reboot.

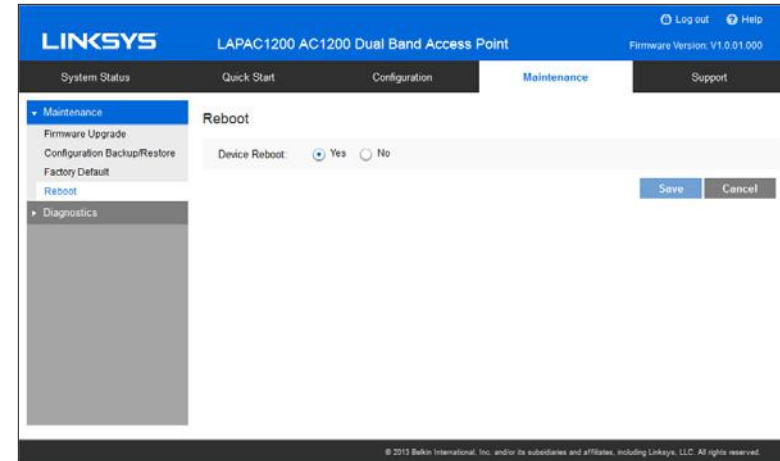


Figure 41: Reboot Screen

Data - Reboot Screen

Device Reboot	If you click Save when the Yes radio button is selected, the device will power cycle.
----------------------	--

Ping Test

Ping Test is used to determine the accessibility of a host on the network.

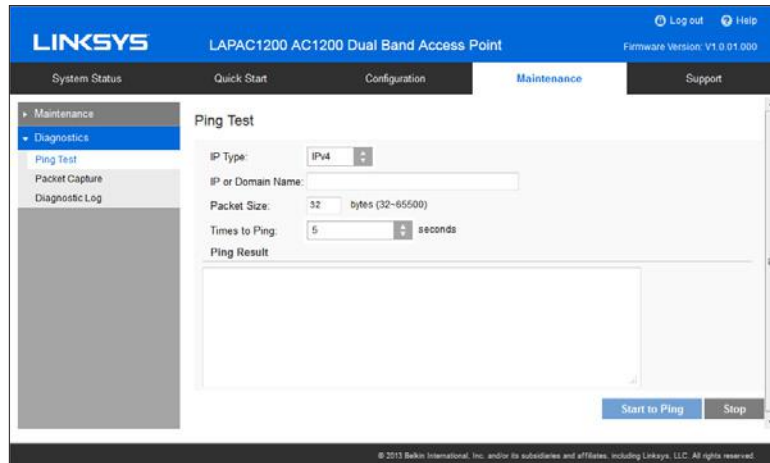


Figure 42: Ping Test Screen

Data - Ping Test Screen

General	
IP Type	Enter the IP type of destination address.
IP or URL Address	Enter the IP address or domain name that you want to ping.
Packet Size	Enter the size of the packet.
Times to Ping	Select the desired number from the drop-list. <ul style="list-style-type: none"> • 5 • 10 • 15 • Unlimited

Packet Capture

Packet Capture is used to capture and store 802.3 packets received and transmitted by the access point based on one specified network interface. The network interface can be radio, SSID or LAN.

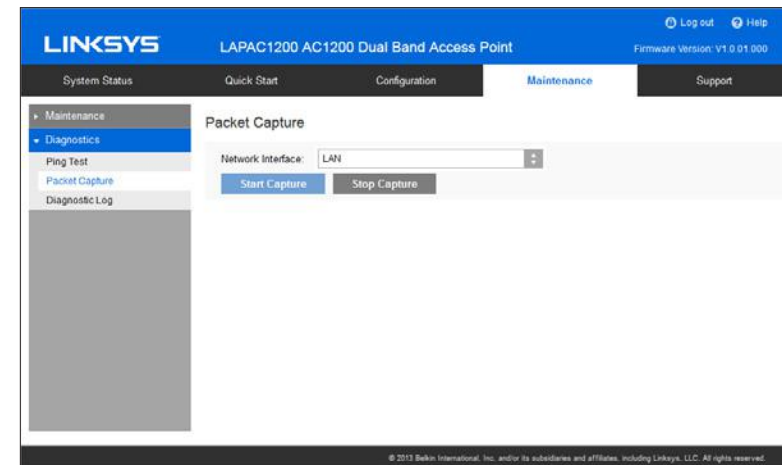


Figure 43: Packet Size Screen

Data - Packet Size Screen

Network Interface	Select the desired network interface from the drop-down list. The interface can be Wireless Radio, SSID or Ethernet.
Start Capture	Click to start the capture. You will be asked to specify a local file to store the packets.
Stop Capture	Click to stop the capture.

Diagnostic Log

Diagnostic Log provides system detail information, such as configuration file, system status and statistics data, hardware information, operational status. The information is useful in troubleshooting and working with technical support.

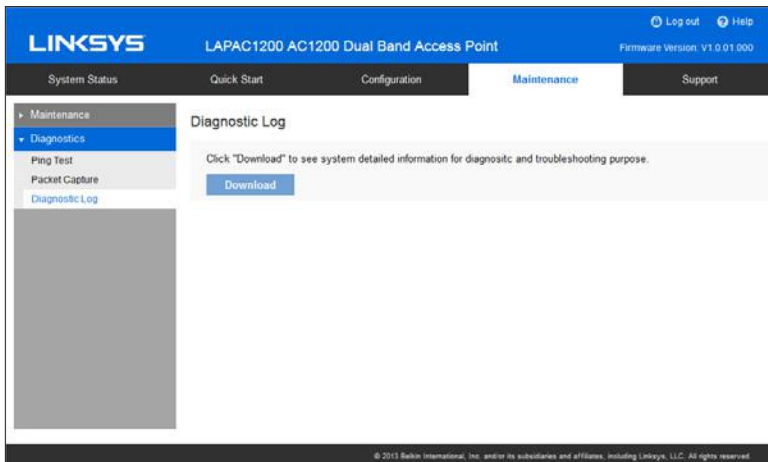


Figure 44: Diagnostic Screen

Data - Diagnostic Screen

Download	Click to download the device diagnostic log into a local file.
-----------------	--

Appendix A Troubleshooting

Overview

This chapter covers some common problems encountered while using the wireless access point, and some possible solutions to them. If you follow the suggested steps and the wireless access point still does not function properly, contact your dealer for further advice.

General Problems

Problem 1: I can't find new access point on my network.

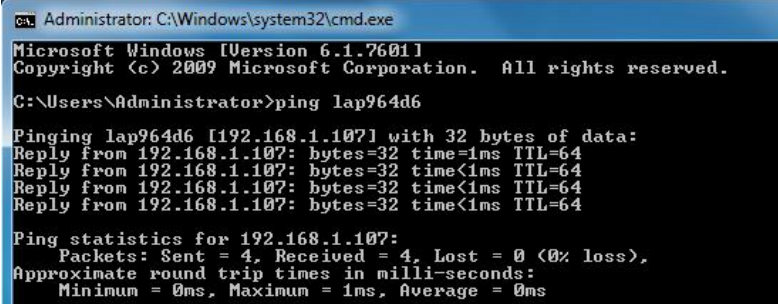
Solution 1: Check the following.

- The wireless access point is properly installed, LAN connections are OK, and it is powered ON. Check the LEDs for system and port status.
- Ensure that your PC and the wireless access point are on the same network segment. (If you don't have a router, this must be the case.)
- You can use the following method to determine the IP address of the wireless access point, and then try to connect using the IP address, instead of the name.

To find the access point's IP address

1. Open a MS-DOS Prompt or Command Prompt Window.
2. Use the Ping command to ping the wireless access point. Enter "ping" followed by the default name of the wireless access point. Default name is "lap" followed by the last five characters of device MAC address. e.g., **ping lap964d6**

3. Check the output of the ping command to determine the IP address of the wireless access point, as shown below.



```
Administrator: C:\Windows\system32\cmd.exe
Microsoft Windows [Version 6.1.7601]
Copyright (c) 2009 Microsoft Corporation. All rights reserved.

C:\Users\Administrator>ping lap964d6

Pinging lap964d6 [192.168.1.107] with 32 bytes of data:
Reply from 192.168.1.107: bytes=32 time=1ms TTL=64
Reply from 192.168.1.107: bytes=32 time<1ms TTL=64
Reply from 192.168.1.107: bytes=32 time<1ms TTL=64
Reply from 192.168.1.107: bytes=32 time<1ms TTL=64

Ping statistics for 192.168.1.107:
    Packets: Sent = 4, Received = 4, Lost = 0 (0% loss),
    Approximate round trip times in milli-seconds:
        Minimum = 0ms, Maximum = 1ms, Average = 0ms
```

Figure 45: Ping

If your PC uses a fixed (static) IP address, ensure that it is using an IP address that is in the network segment (subnet) with the wireless access point. On Windows PCs, you can use Control Panel->Network to check the Properties for the TCP/IP protocol.

If there is no DHCP Server found, the wireless access point will roll back to an IP address and mask of 192.168.1.252 and 255.255.255.0.

Problem 2: My PC can't connect to the LAN via the wireless access point.

Solution 2: Check the following:

- The SSID and security settings on the PC match the settings on the wireless access point.
- On the PC, the wireless mode is set to "Infrastructure"
- If using the Access Control feature, the PC's name and address is in the Trusted Stations list.
- If using 802.1x mode, ensure the PC's 802.1x software is configured correctly. See Appendix C for details of setup for the Windows XP 802.1x client. If using a different client, refer to the vendor's documentation.

Appendix B About Wireless LANs

Overview

Wireless networks have their own terms and jargon. You must understand many of these terms in order to configure and operate a wireless LAN.

Wireless LAN Terminology

Modes

Wireless LANs can work in either of two (2) modes:

- Ad-hoc
- Infrastructure

Ad-hoc Mode

Ad-hoc Mode does not require an access point or a wired (Ethernet) LAN. Wireless stations, e.g., notebook PCs with wireless cards communicate directly with each other.

Infrastructure Mode

In Infrastructure Mode, one or more access points are used to connect wireless stations, e.g., notebook PCs with wireless cards to a wired (Ethernet) LAN. The wireless stations can then access all LAN resources.

NOTE

Access points can only function in Infrastructure Mode, and can communicate only with wireless stations that are set to Infrastructure Mode.

SSID/ESSID

BSS/SSID

A group of wireless stations and a single access point, all using the same ID (SSID), form a Basic Service Set (BSS).

Using the same SSID is essential. Devices with different SSIDs are unable to communicate with each other.

ESS/ESSID

A group of wireless stations, and multiple access points all using the same ID (ESSID), form an Extended Service Set (ESS).

Different access points within an ESS can use different channels. To reduce interference, it is recommended that adjacent access points SHOULD use different channels.

As wireless stations are physically moved through the area covered by an ESS, they will automatically change to the access point that has the least interference or best performance. This capability is called roaming. (Access points do not have or require roaming capabilities.)

Channels

The wireless channel sets the radio frequency used for communication.

- Access points use a fixed channel. You can select the channel used. This allows you to choose a channel that provides the least interference and best performance. For USA and Canada, the following channels are available.

2.4GHz :

2.412 to 2.462 GHz; 11 channels

5GHz:

- 5.180 to 5.240 GHz; 4 channels
- 5.745 to 5.825 GHz; 5 channels

- When using multiple access points it is better if adjacent access points use different channels to reduce interference. The recommended channel spacing between adjacent access points is five channels, e.g., use Channels 1 and 6, or 6 and 11.
- In Infrastructure Mode wireless stations normally scan all channels looking for an access point. If more than one access point can be used, the one with the strongest signal is used. (This can only happen within an ESS.)
- If using Ad-hoc Mode (no access point) all wireless stations should be set to use the same channel. However, most wireless stations will still scan all channels to see if there is an existing Ad-hoc group they can join.

WEP

WEP (Wired Equivalent Privacy) is a standard for encrypting data before it is transmitted. This is desirable because it is impossible to prevent snoopers from receiving any data which is transmitted by your wireless stations. If the data is encrypted, it is meaningless unless the receiver can decrypt it.

If WEP is used, the wireless stations and the wireless access point must have the same settings.

WPA-PSK

In WPA-PSK, like WEP, data is encrypted before transmission. WPA is more secure than WEP. The PSK (pre-shared key) must be entered on each wireless station. The 256-bit encryption key is derived from the PSK, and changes frequently.

WPA2-PSK

This is a further development of WPA-PSK, and offers even greater security, using the AES (Advanced Encryption Standard) method of encryption. It should be used if possible.

WPA-Enterprise

This version of WPA requires a RADIUS server on your LAN to provide the client authentication according to the 802.1X standard. Data transmissions are encrypted using the WPA standard.

If this option is used:

- The access point must have a client login on the RADIUS server.
- Each user must have a user login on the RADIUS server.
- Each user's wireless client must support 802.1X and provide the login data when required.

All data transmission is encrypted using the WPA standard. Keys are automatically generated, so no key input is required.

WPA2-Enterprise

This version of WPA2 requires a RADIUS server on your LAN to provide the client authentication according to the 802.1X standard. Data transmissions are encrypted using the WPA2 standard.

If this option is used:

- The access point must have a client login on the RADIUS server.
- Each user must have a user login on the RADIUS server.
- Each user's wireless client must support 802.1X and provide the login data when required.

All data transmission is encrypted using the WPA2 standard. Keys are automatically generated, so no key input is required.

802.1x

This uses the 802.1X standard for client authentication, and WEP for data encryption. If possible, you should use WPA-Enterprise instead, because WPA encryption is much stronger than WEP encryption.

If this option is used:

- The access point must have a client login on the RADIUS server.
- Each user must have a user login on the RADIUS server.
- Each user's wireless client must support 802.1X and provide the login data when required.
- All data transmission is encrypted using the WEP standard. You only have to select the WEP key size; the WEP key is automatically generated.

Appendix C PC And Server Configuration

Overview

All wireless stations need to have settings that match the wireless access point. These settings depend on the mode in which the access point is being used.

- If using WEP or WPA2-PSK, it is only necessary to ensure that each wireless station's settings match those of the wireless access point, as described below.
- For 802.1x modes, configuration is much more complex. The RADIUS server must be configured correctly, and setup of each wireless station is also more complex.

Using WEP

For each of the following items, each wireless station must have the same settings as the wireless access point.

Mode	On each PC, the mode must be set to Infrastructure.
SSID (ESSID)	This must match the value used on the wireless access point. The default value is LinksysSMB24G for radio 1 and LinksysSMB5G for radio 2. Note The SSID is case sensitive.
Wireless Security	<ul style="list-style-type: none"> • Each wireless station must be set to use WEP data encryption. • The key size (64 bit, 128 bit) must be set to match the access point. • The key values on the PC must match the key values on the access point. <p>Note: On some systems, the key sizes may be shown as 40-bit and 104-bit instead of 64-bit, 128-bit. This is because the key input by the user is 24 bits less than the key size used for encryption.</p>

Using WPA2-PSK

For each of the following items, each wireless station must have the same settings as the wireless access point.

Mode	On each PC, the mode must be set to Infrastructure.
SSID (ESSID)	This must match the value used on the wireless access point. The default value is LinksysSMB24G for radio 1 and LinksysSMB5G for radio 2. Note The SSID is case sensitive.
Wireless Security	On each client, wireless security must be set to WPA2-PSK. <ul style="list-style-type: none"> • The pre-shared key entered on the access point must also be entered on each wireless client. • The encryption method (e.g. TKIP, AES) must be set to match the access point.

Using WPA2-Enterprise

This is the most secure and most complex system.

WPA-Enterprise mode provides greater security and centralized management, but it is more complex to configure.

Wireless Station Configuration

For each of the following items, each wireless station must have the same settings as the wireless access point.

Mode	On each PC, the mode must be set to Infrastructure.
SSID (ESSID)	This must match the value used on the wireless access point. The default value is LinksysSMB24G for radio 1 and LinksysSMB5G for radio 2. Note The SSID is case sensitive.
802.1x Authentication	Each client must obtain a certificate for authentication for the RADIUS server.
802.1x Encryption	Typically, EAP-TLS is used. This is a dynamic key system, so keys do NOT have to be entered on each wireless station. You can also use a static WEP key (EAP-MD5). The wireless access point supports both methods simultaneously.

RADIUS Server Configuration

If using WPA2-Enterprise mode, the RADIUS server on your network must be configured as follows.

- It must provide and accept certificates for user authentication.
- There must be a client login for the wireless access point itself.

The wireless access point will use its default name as its client login name. (However, your RADIUS server may ignore this and use the IP address instead.)

The Shared Key, set on the Security Screen of the access point, must match the Shared Secret value on the RADIUS server.

- Encryption settings must be correct.

802.1x Server Setup (Windows 2000 Server)

This section describes using Microsoft Internet Authentication Server as the RADIUS server, since it is the most common RADIUS server available that supports the EAP-TLS authentication method.

The following services on the Windows 2000 Domain Controller (PDC) are also required.

- dhcpcd
- dns
- rras
- webserver (IIS)
- RADIUS Server (Internet Authentication Service)
- Certificate Authority

Windows 2000 Domain Controller Setup

1. Run *dcpromo.exe* from the command prompt.
2. Follow all of the default prompts, ensure that DNS is installed and enabled during installation.

Services Installation

1. Select the *Control Panel* -> *Add/Remove Programs*.
2. Click *Add/Remove Windows Components* from the left side.
3. Ensure that the following components are selected.

Certificate Services. After enabling this, you will see a warning that the computer cannot be renamed and joined after installing certificate services. Select *Yes* to select certificate services and continue

World Wide Web Server. Select *World Wide Web Server* on the *Internet Information Services* (IIS) component.

From the *Networking Services* category, select *Dynamic Host Configuration Protocol (DHCP)*, and *Internet Authentication Service* (DNS should already be selected and installed).



Figure 46: Components Screen

4. Click **Next**.
5. Select the Enterprise root CA, and click **Next**.

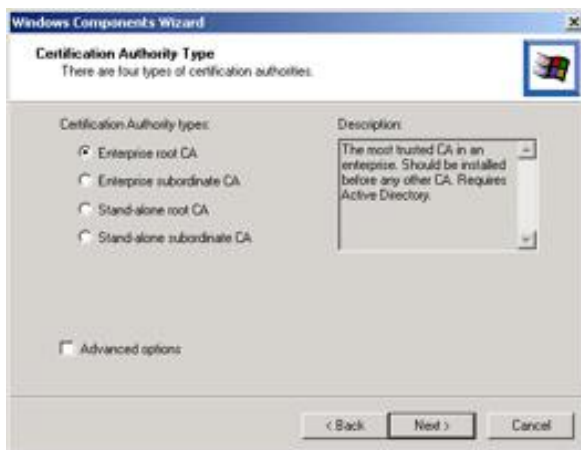


Figure 47: Certification Screen

6. Enter the information for the Certificate Authority, and click **Next**.

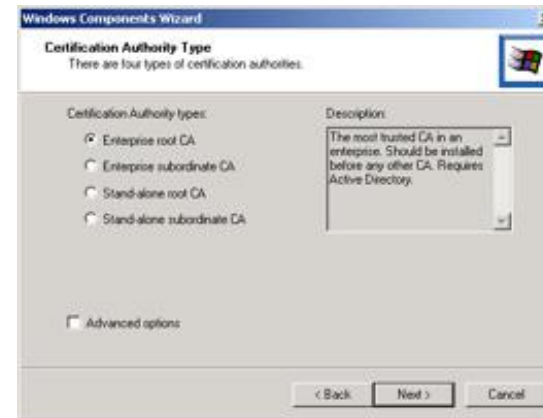


Figure 48: CA Screen

7. Click **Next** if you don't want to change the CA's configuration data.
8. Installation will warn you that Internet Information Services are running, and must be stopped before continuing. Click **OK**, then **Finish**.

DHCP server configuration

1. Click on Start -> Programs -> Administrative Tools -> DHCP
2. Right-click on the server entry, and select "New Scope".

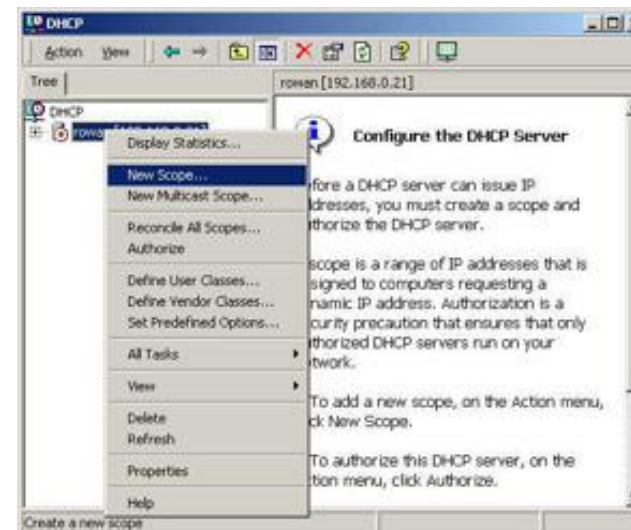


Figure 49: DHCP Screen

3. Click **Next** when the New Scope Wizard Begins.
4. Enter the name and description for the scope, click **Next**.
5. Define the IP address range. Change the subnet mask if necessary. Click **Next**.



Figure 50: IP Address Screen

6. Add exclusions in the address fields if required. If no exclusions are required, leave it blank. Click **Next**.
7. Change the Lease Duration time if preferred. Click **Next**.
8. Select Yes, I want to configure these options now, and click **Next**.
9. Enter the router address for the current subnet. The router address may be left blank if there is no router. Click **Next**.

10. For the parent domain, enter the domain you specified for the domain controller setup, and enter the server's address for the IP address. Click **Next**.

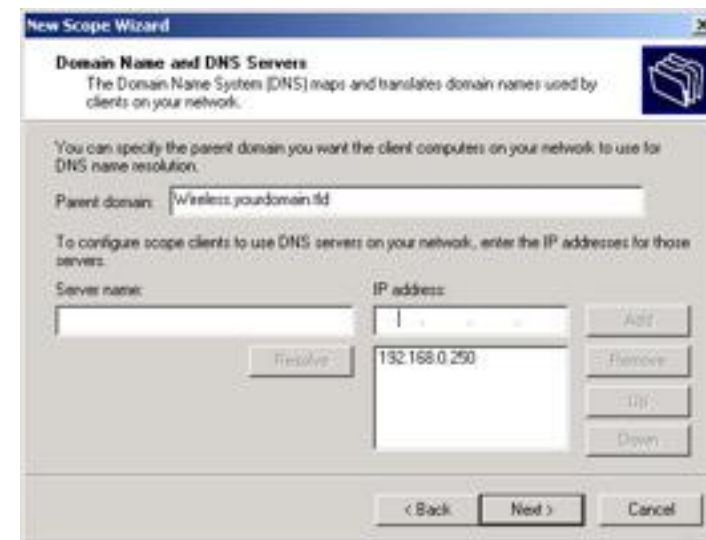


Figure 51: DNS Screen

11. If you don't want a WINS server, just click **Next**.
12. Select Yes, I want to activate this scope now. Click **Next**, then **Finish**.
13. Right-click on the server, and select Authorize. It may take a few minutes to complete.

Certificate Authority Setup

1. Select *Start -> Programs -> Administrative Tools -> Certification Authority*.
2. Right-click Policy Settings, and select *New -> Certificate to Issue*.

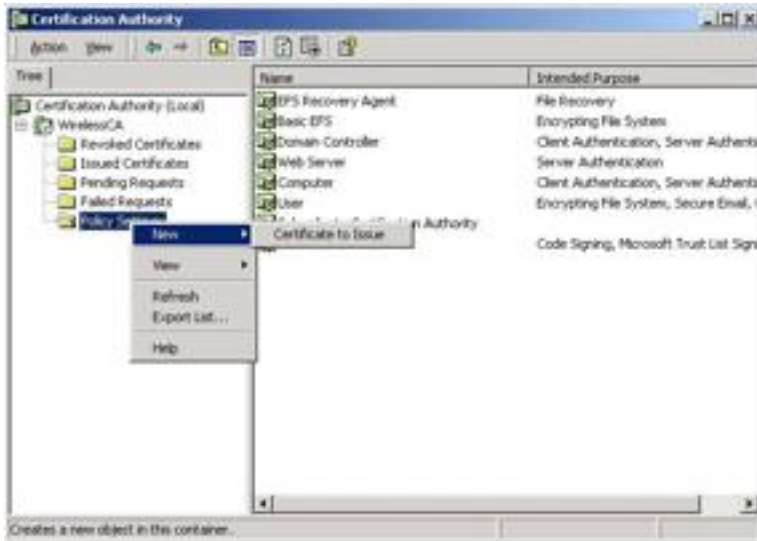


Figure 52: Certificate Authority Screen

3. Select *Authenticated Session and Smartcard Logon* (select more than one by holding down the Ctrl key). Click **OK**.

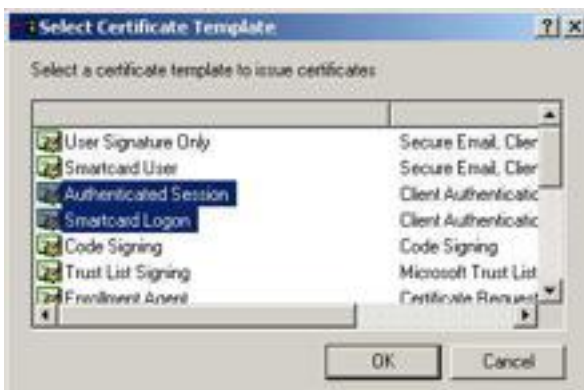


Figure 53: Template Screen

4. Select *Start -> Programs -> Administrative Tools -> Active Directory Users and Computers*.
5. Right-click on your active directory domain, and select *Properties*.

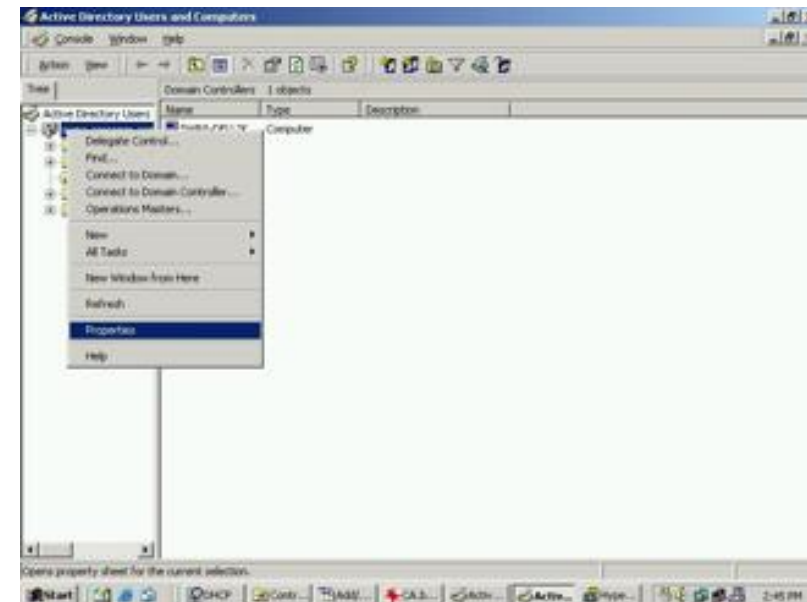


Figure 54: Active Directory Screen

6. Select the *Group Policy* tab, choose *Default Domain Policy* then click **Edit**.

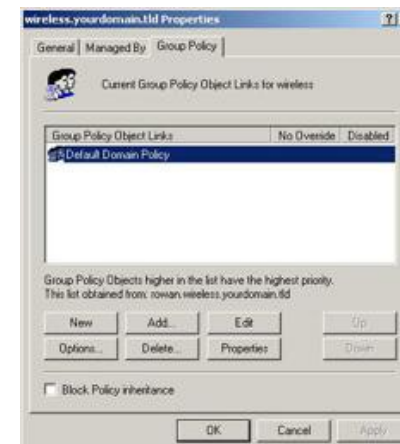


Figure 55: Group Policy Tab

7. Select *Computer Configuration -> Windows Settings -> Security Settings -> Public Key Policies*, right-click *Automatic Certificate Request Settings -> New -> Automatic Certificate Request*.

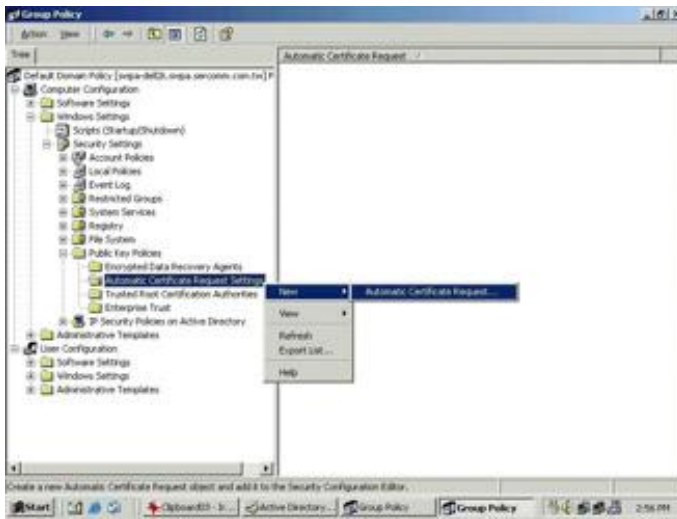


Figure 56: Group Policy Screen

8. When the Certificate Request Wizard appears, click **Next**.
9. Select *Computer*, click **Next**.



Figure 57: Certificate Template Screen

10. Ensure that your Certificate Authority is checked, click **Next**.
11. Review the policy change information and click **Finish**.
12. Click *Start -> Run*, type "cmd" and press enter.
Enter "secdit /refreshpolicy machine_policy"
This command may take a few minutes to take effect.

Internet Authentication Service (RADIUS) Setup

1. Select *Start -> Programs -> Administrative Tools -> Internet Authentication Service*
2. Right-click on *Clients*, and select *New Client*.

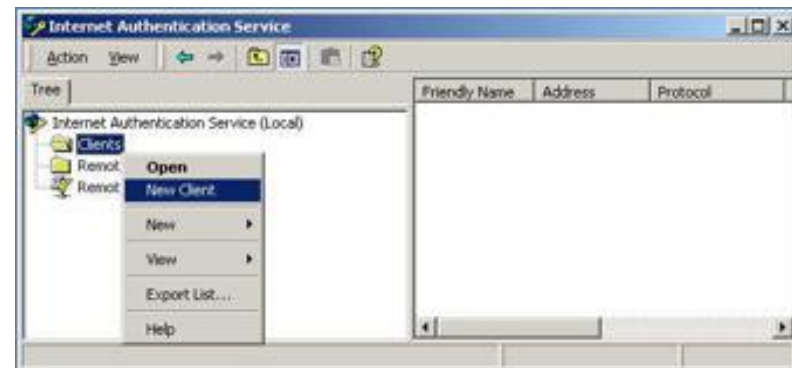


Figure 58: Service Screen

3. Enter a name for the access point, click **Next**.
4. Enter the address or name of the wireless access point, and set the shared secret, as entered on the Security Settings of the wireless access point.
5. Click **Finish**.
6. Right-click on *Remote Access Policies*, select *New Remote Access Policy*.
7. Assuming you are using EAP-TLS, name the policy "eap-tls", and click **Next**.
8. Click **Add...**
If you don't want to set any restrictions and a condition is required, select *Day-And-Time-Restrictions*, and click **Add...**
9. Click **Permitted**, then **OK**. Select **Next**.
10. Select *Grant remote access permission*. Click **Next**.

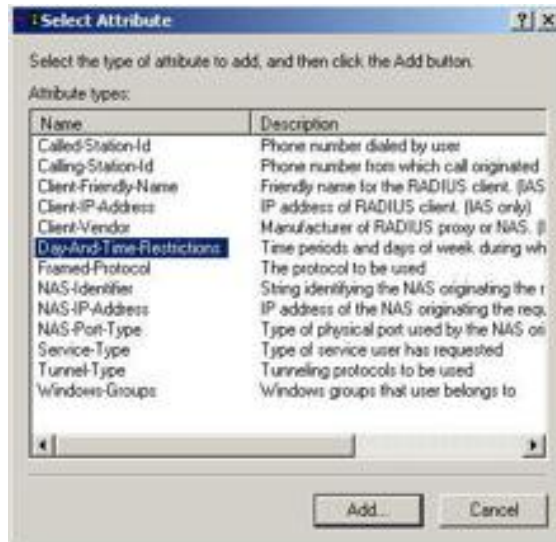


Figure 59: Attribute Screen

11. Click **Edit Profile...** and select the *Authentication* tab. Enable Extensible Authentication Protocol, and select *Smart Card or other Certificate*. Deselect other authentication methods listed. Click **OK**.



Figure 60: Authentication Screen

12. Select No if you don't want to view the help for EAP. Click **Finish**.

Remote Access Login for Users

1. Select *Start -> Programs -> Administrative Tools -> Active Directory Users and Computers*.
2. Double click on the user who you want to enable.
3. Select the *Dial-in* tab, and enable Allow access. Click **OK**.



Figure 61: Dial-in Screen

802.1x Client Setup on Windows XP

Windows XP ships with a complete 802.1x client implementation. If using Windows 2000, you can install SP3 (Service Pack 3) to gain the same functionality.

If you don't have either of these systems, you must use the 802.1x client software provided with your wireless adapter. Refer to your vendor's documentation for setup instructions.

The following instructions assume that:

- You are using Windows XP
- You are connecting to a Windows 2000 server for authentication.
- You already have a login (User-name and password) on the Windows 2000 server.

Client Certificate Setup

1. Connect to a network that doesn't require port authentication.
2. Start your Web browser. In the Address box, enter the IP address of the Windows 2000 Server, followed by "/certsrv", e.g, "http://192.168.0.2/certsrv"
3. You will be prompted for a user name and password. Enter the *User name* and *Password* assigned to you by your network administrator, and click **OK**.



Figure 62: Connect Screen

4. On the first screen (below), select Request a certificate, click **Next**.



Figure 63: Wireless CA Screen

5. Select User certificate request and select *User Certificate*, click **Next**.



Figure 64: Request Type Screen

6. Click **Submit**.

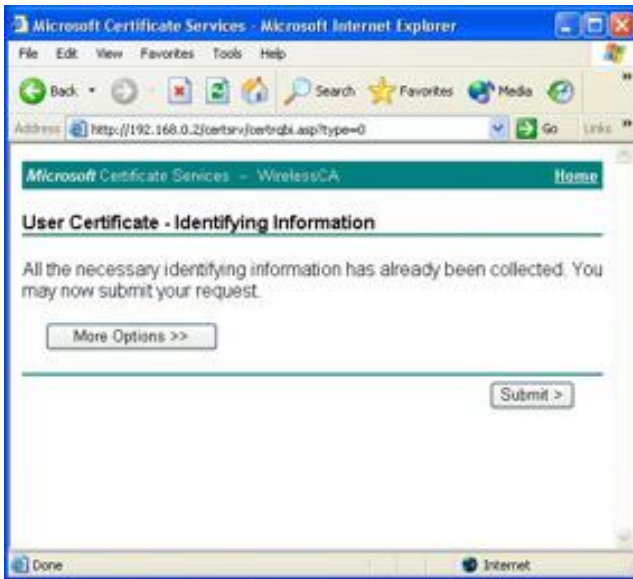


Figure 65: Identifying Information Screen

7. A message will be displayed and the certificate will be returned to you. Click **Install this certificate**.

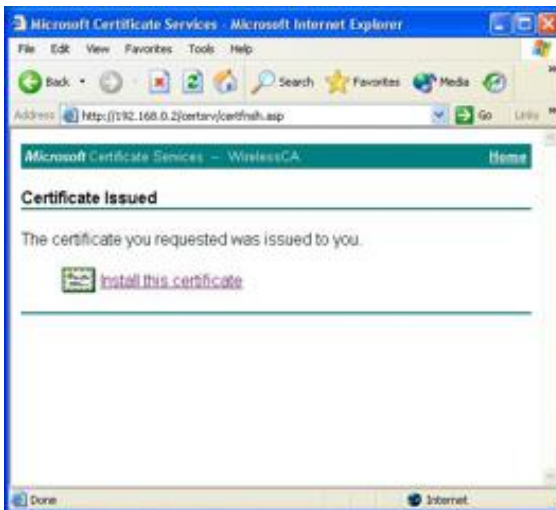


Figure 66: Certificate Issued Screen

8. You will receive a confirmation message. Click **Yes**.



Figure 67: Root Certificate Screen

9. Certificate setup is now complete.

802.1x Authentication Setup

1. Open the properties for the wireless connection, by selecting *Start - Control Panel - Network Connections*.
2. Right-click on the *Wireless Network Connection*, and select *Properties*.
3. Select the *Authentication* Tab, and ensure that *Enable network access control using IEEE 802.1X* is selected, and *Smart Card or other Certificate* is selected from the EAP type.

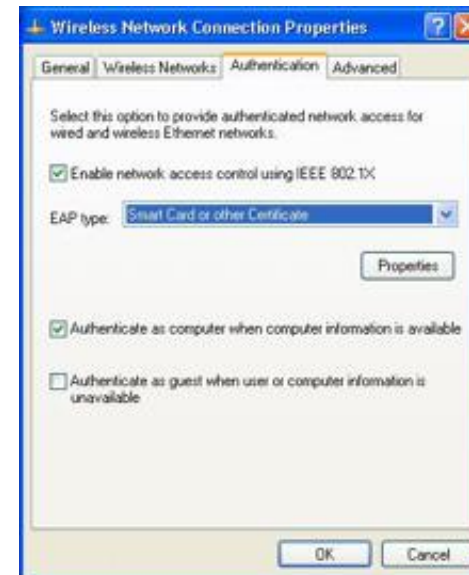


Figure 68: Authentication Tab

Encryption Settings

The encryption settings must match the access point's on the wireless network you wish to join.

- Windows XP will detect any available wireless networks, and allow you to configure each network independently.
- Your network administrator can advise you of the correct settings for each network. 802.1x networks typically use EAP-TLS. This is a dynamic key system, so there is no need to enter key values.

Enabling Encryption

To enable encryption for a wireless network, follow this procedure.

1. Click on the *Wireless Networks* tab.



Figure 69: Wireless Networks Screen

2. Select the wireless network from the Available Networks list, and click **Configure**.
3. Select and enter the correct values, as advised by your Network Administrator.

For example, to use EAP-TLS, you would enable Data encryption, and click the checkbox for the setting The key is provided for me automatically, as shown below.



Figure 70: Properties Screen

Setup for Windows XP and 802.1x client is now complete.

Using 802.1x Mode (without WPA)

This is very similar to using WPA-Enterprise.

The only difference is that on your client, you must NOT enable the setting The key is provided for me automatically.

Instead, you must enter the WEP key manually, ensuring it matches the WEP key used on the access point.



Figure 71: Properties Screen

NOTE

On some systems, the 64-bit WEP key is shown as 40-bit and the 128-bit WEP key is shown as 104-bit. This difference arises because the key input by the user is 24 bits less than the key size used for encryption.

Visit linksys.com/support for award-winning technical support

© 2014 Belkin International, Inc. and/or its affiliates. All rights reserved. BELKIN, LINKSYS and many product names and logos are trademarks of the Belkin group of companies. Third-party trademarks mentioned are the property of their respective owners.

LNKPG-00114 Rev. A00