

IGMC-1011GF/1011GP



IGMC-1011GF



IGMC-1011GP

Industrial slim type Gigabit Ethernet to fiber media converter

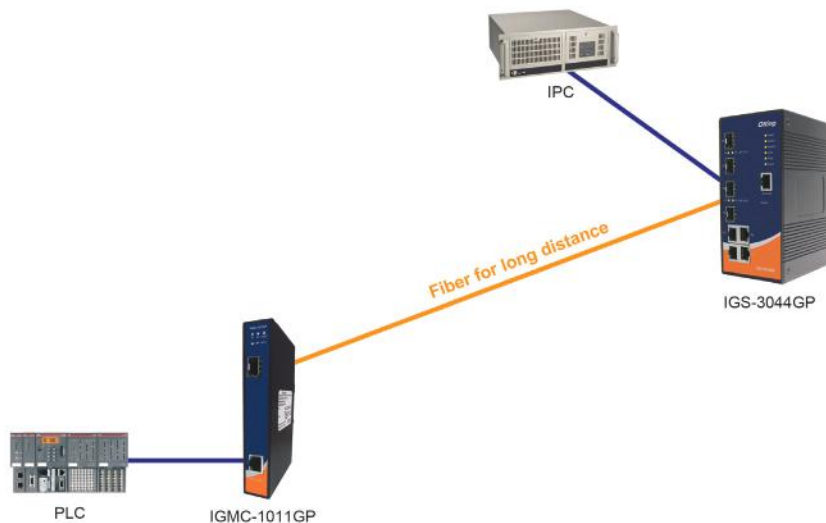
Features

- Support 1 port 10/100/1000Base-T(X) auto-negotiation and auto-MDI/MDI-X
- Support 1 port 1000Base-X multi-mode/single-mode or SFP port
- Support Jumbo Frame up to 10240 Bytes
- Support store-and-forward transmission
- Relay output to carry capacity of 1A at 24 VDC
- Rigid IP-30 housing design
- DIN-Rail and wall mounting enabled



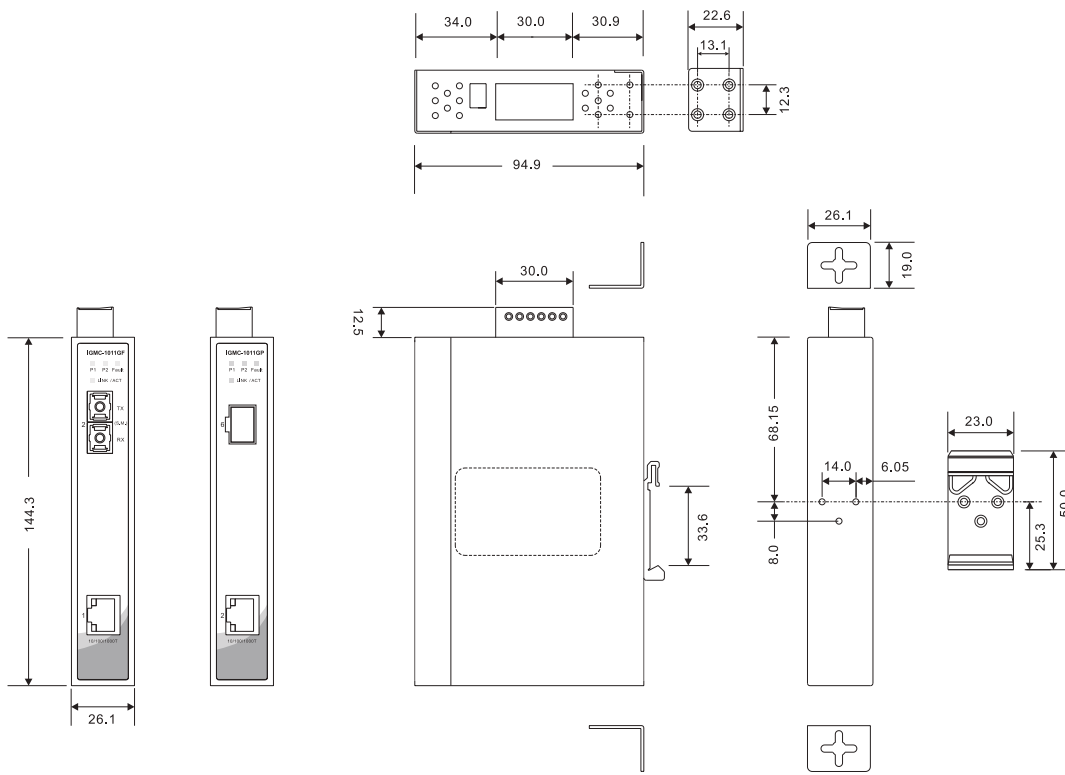
Introduction

IGMC-1011GF/IGMC-1011GP series are industrial gigabit media converters provide media conversion between 10/100/1000Base-T(X) and 1000Base-X. IGMC-1011GF/IGMC-1011GP series are rigid IP-30 housing design and supporting an operating temperature of -40 to 70 °C. Therefore, the IGMC-1011GF/IGMC-1011GP series are reliable media converters and can satisfy most demand of operating environment.



Connections of Media Converter

Dimensions



(Unit=mm)

Specifications

ORing Media Converter Model		IGMC-1011GF-MM-SC	IGMC-1011GF-SS-SC	IGMC-1011GP
Physical Ports				
10/100/1000Base-T(X) Ports in RJ45 Auto MDI/MDIX		1	1	1
Fiber Ports Specifications	Fiber Ports Number	1	1	-
	Fiber Ports standard	1000Base-SX	1000Base-LX	-
	Fiber Mode	Multi-mode	Single-mode	-
	Fiber Diameter (µm)	62.5/125 µm 50/125 µm	9/125 µm	-
	Fiber Optical Connector	SC	SC	-
	Typical Distance (km)	550 m	10 km	-
	Wavelength (nm)	850 nm	1310 nm	-
	Max. Output Optical Power (dBm)	-4 dBm	-3 dBm	-
	Min. Output Optical Power (dBm)	-9.5 dBm	-9.5 dBm	-
	Max. Input Optical Power (Saturation)	0 dBm	-3 dBm	-
	Min. Input Optical Power (Sensitivity)	-18 dBm	-20 dBm	-
Link Budget (dB)	8.5 dB	10.5 dB	-	
1000Base-X SFP port		-	-	1
Technology				
Ethernet Standards		IEEE 802.3 for 10Base-T IEEE 802.3u for 100Base-TX IEEE 802.3ab for 1000Base-T IEEE 802.3z for 1000Base-X		
Jumbo Frame		10240 Bytes		

LED Indicators			
Power / Indicator	Green : Power LED x 2		
Fault Indicator	Amber : Indicate power failure		
10/100/1000Base-T(X) RJ45 Port Indicator	Green for port Link/Act. Amber for 100Mbps indicator		
1000Base-X Port Indicator	Green for port Link/Act		
Fault contact			
Relay	Relay output to carry capacity of 1A at 24 VDC		
Dip Switch	Relay output function enable / disable by dip switch		
Power			
Input Power	Dual 12~ 48 VDC power inputs on 6-pin terminal block		
Power Consumption (Typ.)	3.5 Watts		
Overload Current Protection	Present		
Reverse Polarity Protection	Present		
Physical Characteristics			
Enclosure	IP-30		
Dimensions (W x D x H)	26.1(W) x 94.9(D) x 144.3(H) mm (1.03x3.74x5.68 inch.)		
Weight (g)	400 g	400 g	380g
Environmental			
Storage Temperature	-40 to 85°C (-40 to 185°F)		
Operating Temperature	-40 to 70°C (-40 to 158°F)		
Operating Humidity	5% to 95% Non-condensing		
Regulatory Approvals			
EMI	FCC Part 15, CISPR (EN55022) class A		
EMS	EN61000-4-2 (ESD), EN61000-4-3 (RS), EN61000-4-4 (EFT), EN61000-4-5 (Surge), EN61000-4-6 (CS), EN61000-4-8, EN61000-4-11		
Shock	IEC60068-2-27		
Free Fall	IEC60068-2-32		
Vibration	IEC60068-2-6		
Safety	EN60950-1		
MTBF (Hours) (MIL-HDBK-217F2, GB, GC, 25°C)	597,923	611,417	650,069
Warranty	5 years		

Ordering Information

IGMC-1 **AA** **B** **CC** - **DD** - **EE**

Code Definition	10/100/1000Base-T(X) Port Number	1000Base-X Fiber Port Number	Fiber Port Type	Fiber Optical Mode	Fiber Optical Connector
Option	- 01 : 1 port	- 1 : 1 port	- GF : 1000Base-FX Fiber - GP : 1000Base-X SFP	- MM : Multi-mode - SS : Single-mode	- SC : SC connector

	Model Name	Description
Available Model	IGMC-1011GF-MM-SC	Industrial Gigabit Ethernet to fiber media converter with 1x10/100/1000Base-T(X) and 1x1000Base-SX, multi-mode, 550m/850nm, SC connector
	IGMC-1011GF-SS-SC	Industrial Gigabit Ethernet to fiber media converter with 1x10/100/1000Base-T(X) and 1x1000Base-LX, single-mode, 10km/1310nm, SC connector
	IGMC-1011GP	Industrial Gigabit Ethernet to fiber media converter with 1x10/100/1000Base-T(X) and 1x1000Base-X, SFP socket

Packing List

- IGMC-1011GF/GP
- DIN-Rail Kit
- Wall-Mount Kit
- Quick Installation Guide

Optional Accessories (Can be purchased separately)

- SFP1G series, 1Gbps SFP optical transceiver
- DR-45 series, 45W DIN-Rail power supply
- DR-75 series, 75W DIN-Rail power supply
- DR-120 series, 120W DIN-Rail power supply
- SDR-240-48, 240W DIN-Rail power supply
- SDR-480-48, 480W DIN-Rail power supply
- FPC series : Fiber Patch cord