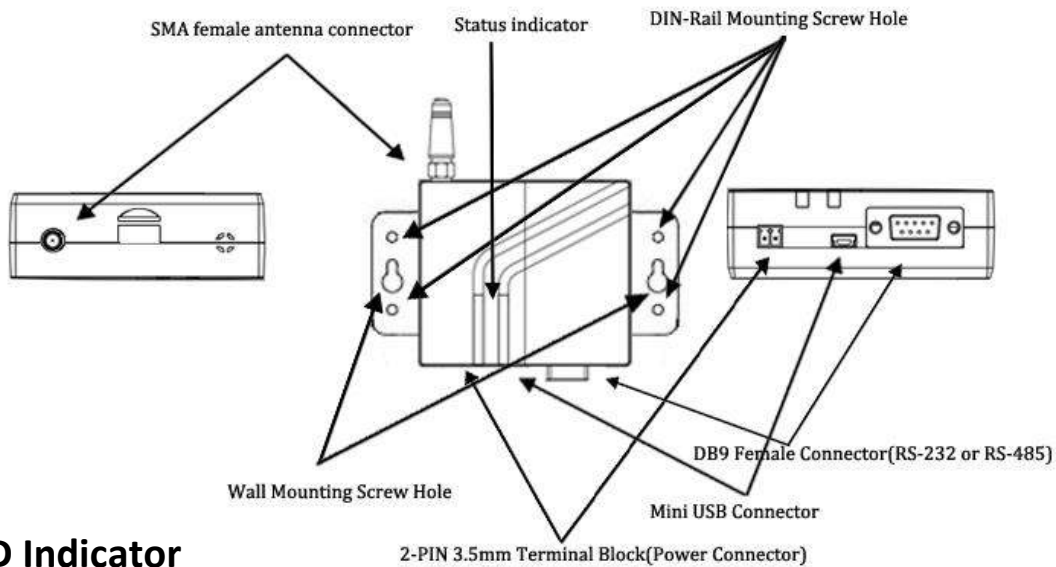


Robustel GoRugged M1000 MP Quick Guide

Chapter 1. Product Concept

1.1 Overview



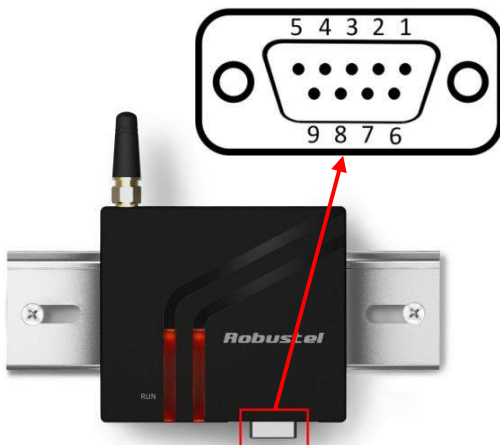
1.2 LED Indicator



After inserting the SIM card into the modem and power on, the LED indicator's status should be as follow when work normally:

Name	Status
RUN	On

1.3 PIN assignment for modem's DB9 female connector

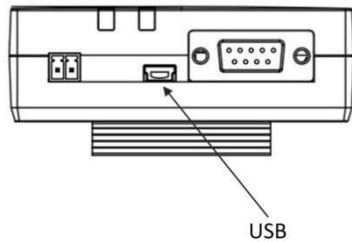


PIN	RS232	RS485 (2-wire)	Direction
1	DCD	Data+ (A)	M1000 MP → Device
2	RXD		M1000 MP → Device
3	TXD		Device → M1000 MP
4	DTR		Device → M1000 MP
5	GND		-
6	DSR	Data- (B)	M1000 MP → Device
7	RTS		Device → M1000 MP
8	CTS		M1000 MP → Device
9	RI		M1000 MP → Device

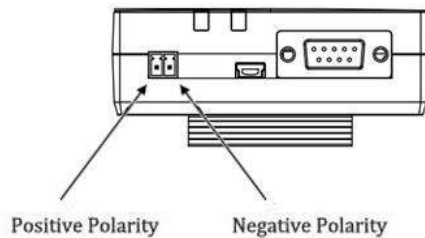
1.4 USB Interface

USB interface can be used for sending/receiving data and power supply. When USB interface of M1000 MP is used for sending/receiving data as well as power supply, current/voltage output of USB interface which connects to M1000 MP's USB interface shall at least reach to **1A/5V**.

*Note: Normally, current/voltage output of PC's USB 2.0 interface is only 0.5A/5V. So when you use USB interface for sending/receiving data, you should use power input interface for power supply (please check section **2.8 Power Supply**).*



1.5 Power Supply



Note: Please take care about the polarity, and do not make reverse connection.

Chapter 2. Hardware Installation

2.1 Insert/Remove SIM Card

SIM card is used for connecting to cellular network, you need buy SIM card from local operators.



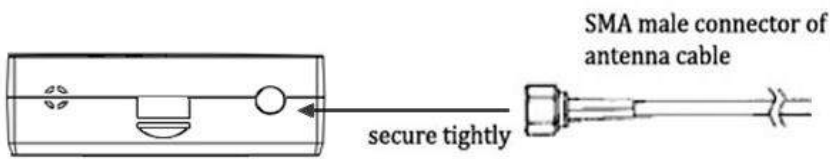
Note:

1. Don't touch the metal surface of the SIM card in case information in the card is lost or destroyed.
2. Don't bend or scratch your SIM card. Keep the card away from electricity and magnetism.
3. A SIM card set with PIN code cannot be used normally in the gateway without the correct PIN code.
4. Make sure to disconnect the power source from your modem before inserting and removing your SIM card.



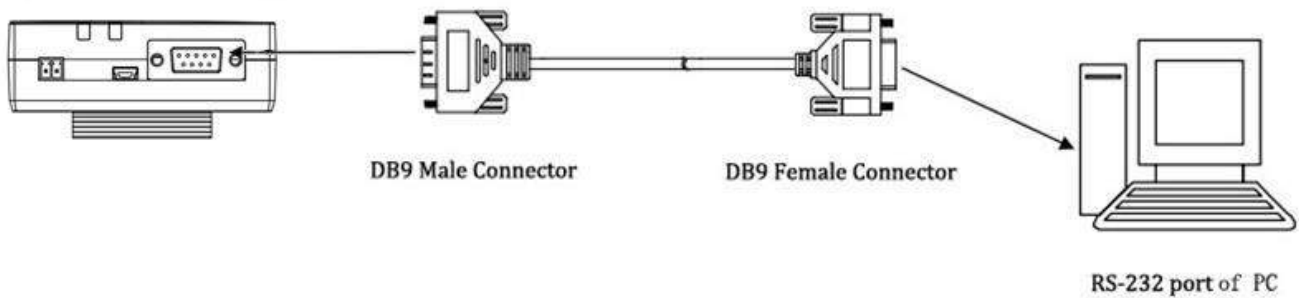
2.2 Connect the External Antenna (SMA Type)

Connect this to an external antenna with SMA male connector. Make sure the antenna is for the correct frequency as your mobile operator with impedance of 50ohm, and also connector is secured tightly.

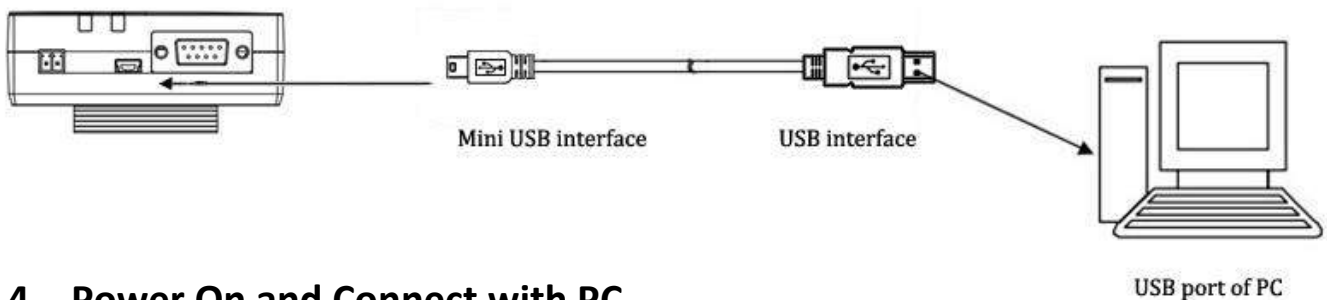


2.3 Connect the Modem to External Device

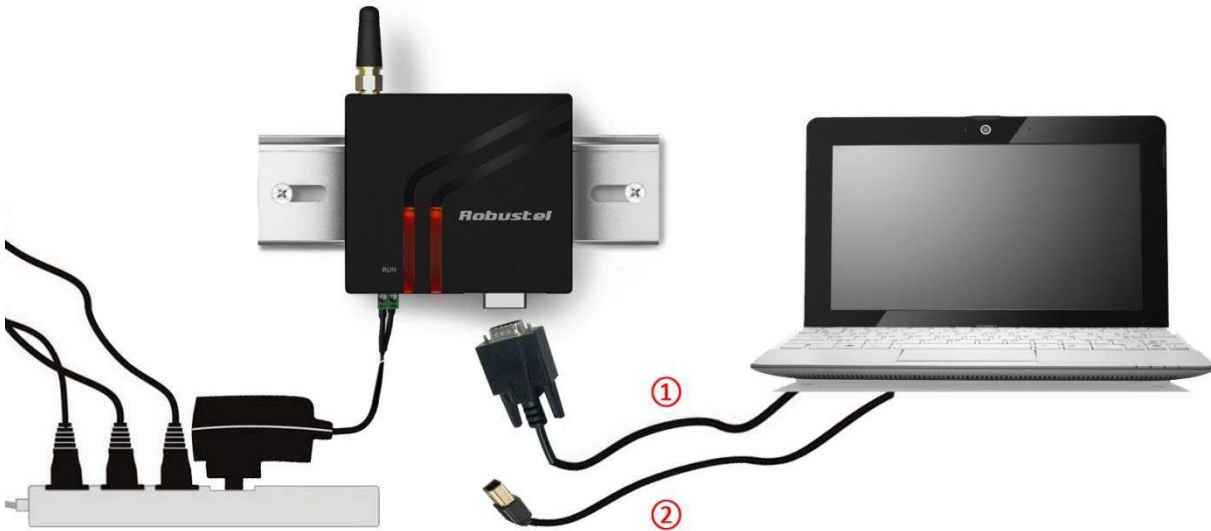
User can use the serial cable to connect the modem's DB9 female connector to external controller / computer.



User can use the USB cable to connect the modem's Mini USB Connector to external controller / computer.



2.4 Power On and Connect with PC



Chapter 3. Operate the Modem

We can operate and configure M1000 MP via AT commands through mini USB port or serial port. This chapter will introduce mainly AT commands examples while configuring M1000 MP.

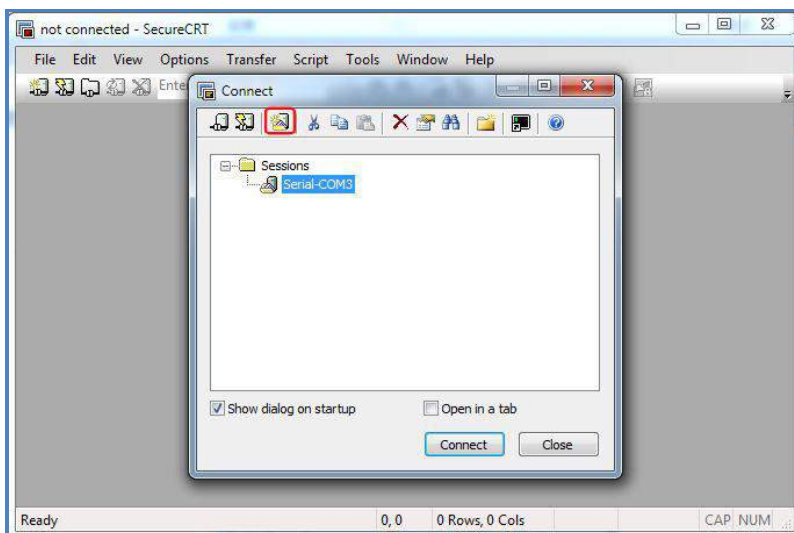
3.1 AT Command Set

M1000 MP supports the guidelines known as the “AT Command Set.” AT Command Set is the industry standard line-oriented command language used to communicate with the modem.

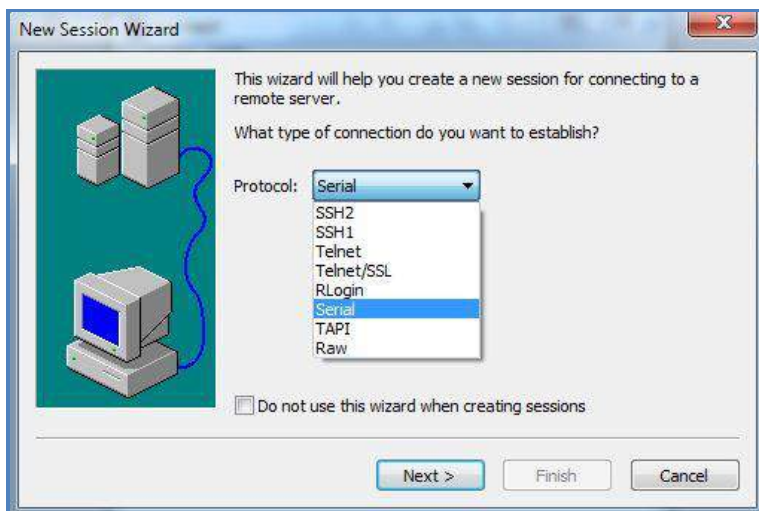
Note: You can enter AT commands to configure M1000 MP from serial software such as secureCRT which you can download via: <https://app.box.com/s/arkn6xk1asqs1myvuue>.

3.1.1 Start SecureCRT

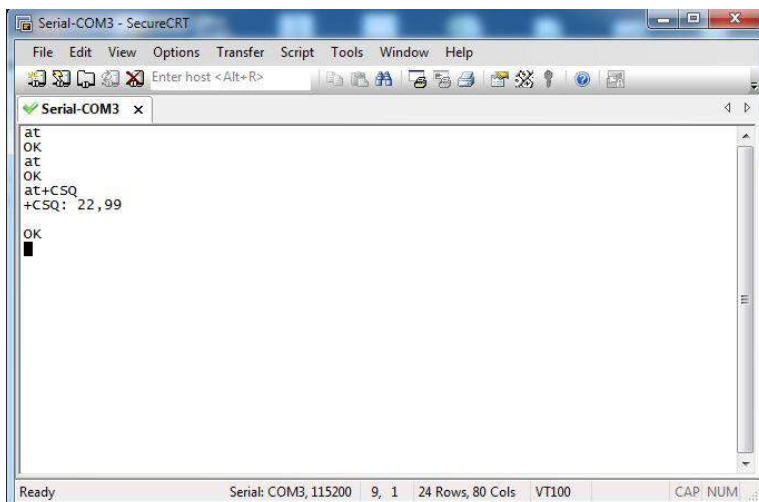
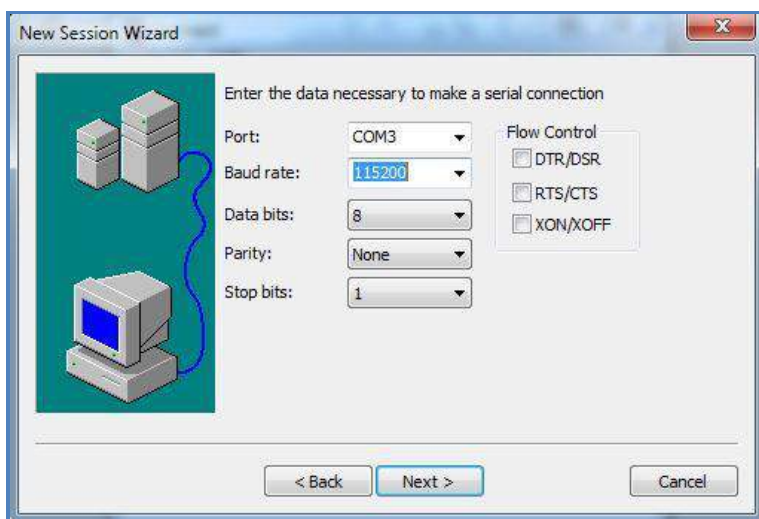
1. Double click to start SecureCRT Potable.exe .
2. File->Connect->New Session



- 3. Select Protocol as "Serial".



- 4. Select relevant COM port and match the parameters as below, click the "Next" button to finish this session.
Note: you need to match the serial parameters as: 115200,8,n,1, and disable "RTS/CTS".



Note: Please refer to **Robustel GoRugged M1000 MP User Guide** to get more details about M1000' configuration.