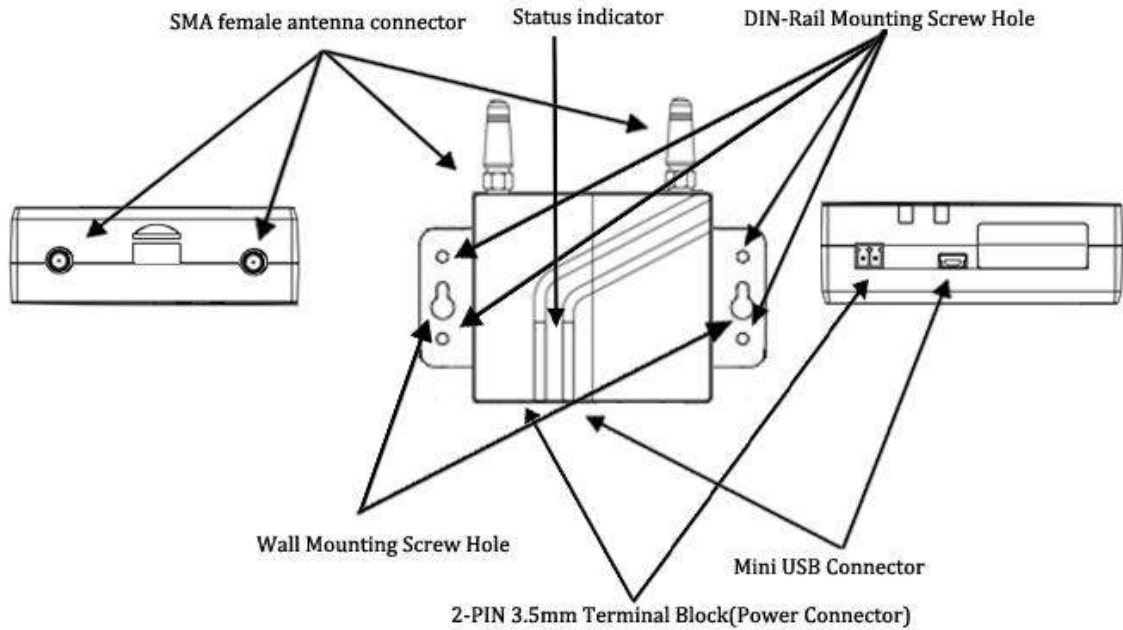


Robustel GoRugged M1000 UP Quick Guide

Chapter 1. Interface Introduction

1.1 Overview



1.2 LED Indicator



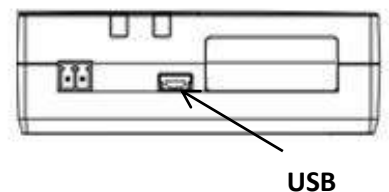
After inserting the SIM card into the modem and power on, the LED indicator’s status should be as follow when work normally:

Name	Status
RUN	On

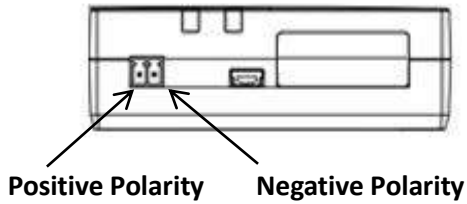
1.3 USB interface

USB interface can be used for configuration, sending/receiving data and power supply. When USB interface of M1000 UP is used for sending/receiving data as well as power supply, current/voltage output of USB interface which connects to M1000 UP’s USB interface shall at least reach to 1A/5V.

Note: Normally, current/voltage output of laptop’s USB 2.0 interface is only 0.5A/5V. So when you use USB interface for sending/receiving data, you should use power input interface for power supply (please check section 1.4).



1.4 Power Supply



The power supply range is 6 to 26 VDC.

Note: Please take care about the polarity, and do not make reverse connection.

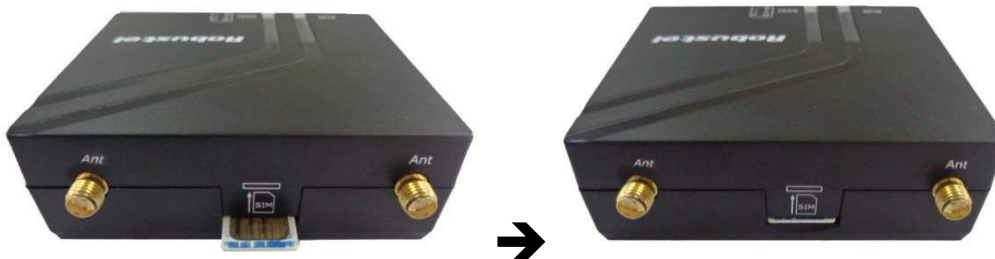
Chapter 2. Hardware Installation

2.1 Insert/Remove SIM Card

SIM card is used for connecting to cellular network, you need buy SIM card from local operators.

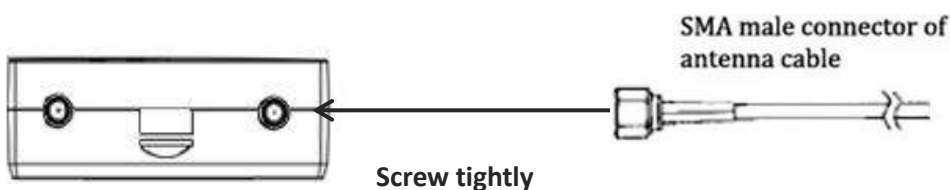
Note:

1. Don't touch the metal surface of the SIM card in case information in the card is lost or destroyed.
2. Don't bend or scratch your SIM card. Keep the card away from electricity and magnetism.
3. A SIM card set with PIN code cannot be used normally in the gateway without the correct PIN code.
4. Make sure to disconnect the power source from your modem before inserting and removing your SIM card.



2.2 Connect the External Antenna (SMA Type)

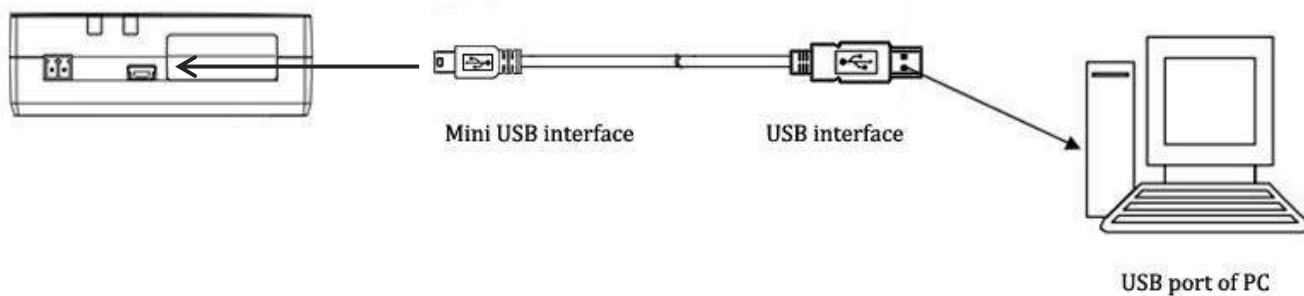
Connect this to an external antenna with SMA male connector. Make sure the antenna is for the correct frequency as your GSM/GPRS/UMTS/HSPA operator with impedance of 50ohm, and also connector is screwed tightly.



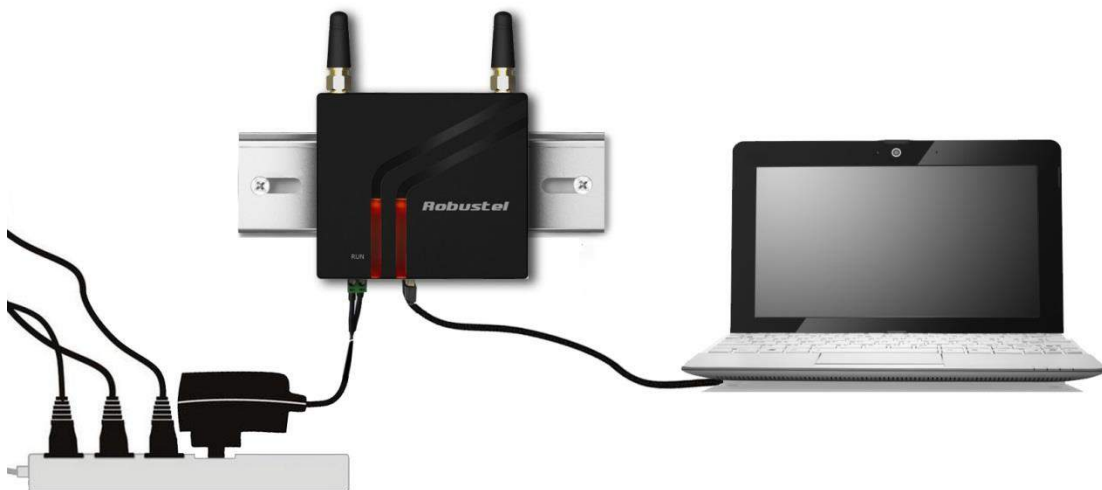
2.3 Connect the Modem to External Device

User can use the USB cable to connect the modem's Mini USB Connector to external slave devices / controller / computer.

Note: User needs to install relevant USB driver to PC, which you can find out in the CD.



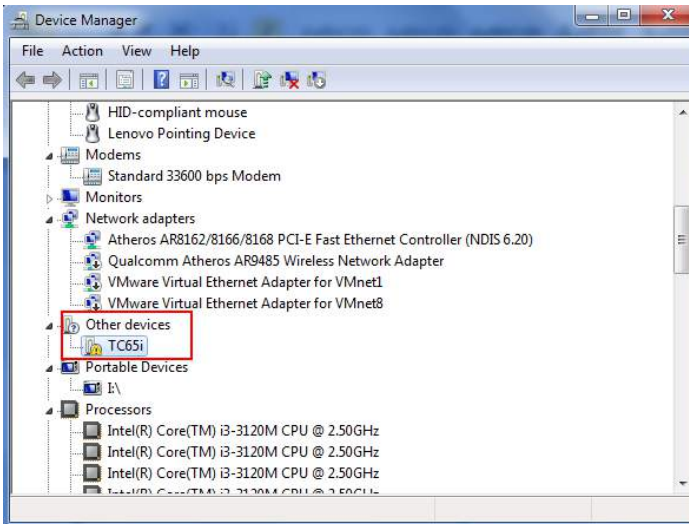
2.4 Power On and Connect with PC



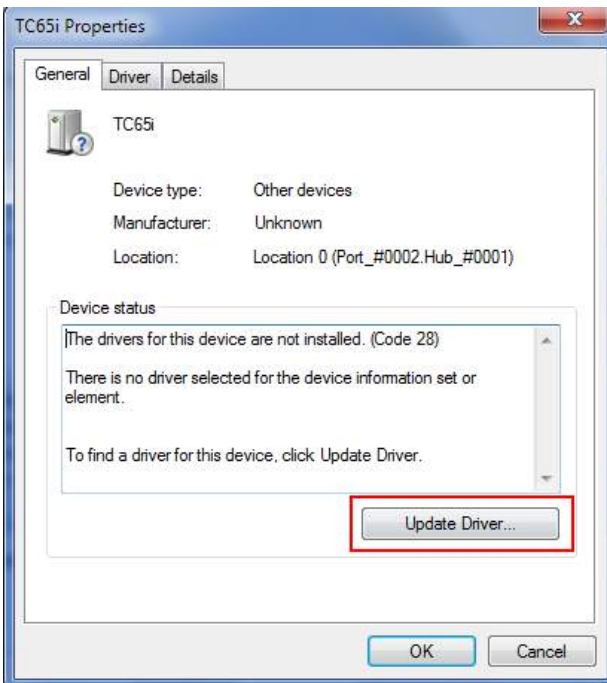
Chapter 3. Operate the Modem

3.1 Install USB driver

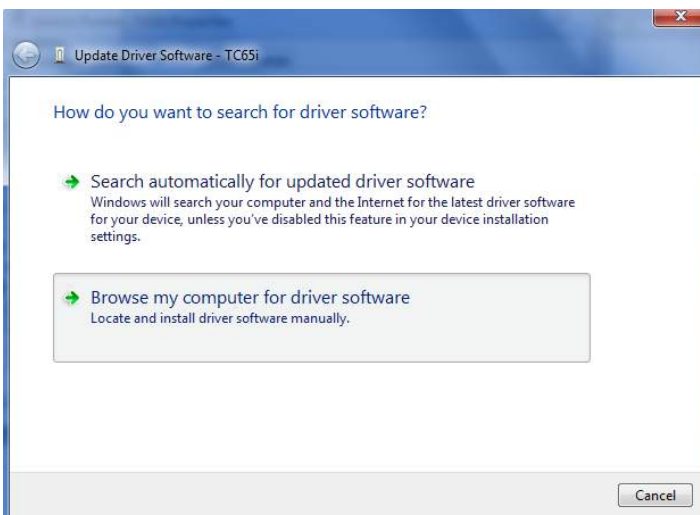
1. In the Control Panel, when you install USB cable to PC, it will popup tab **Other devices** and show M1000 UP's module version.



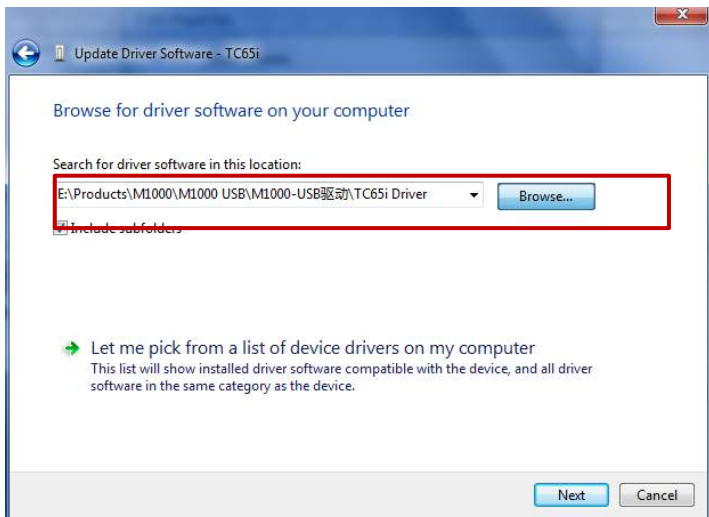
2. Right-click to enter **Properties** and then click **Update Driver**.



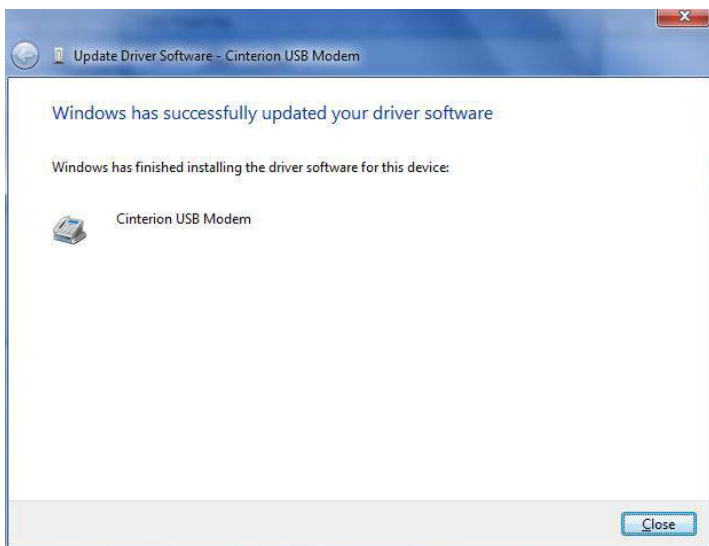
3. Click **Browse my computer for driver software**.



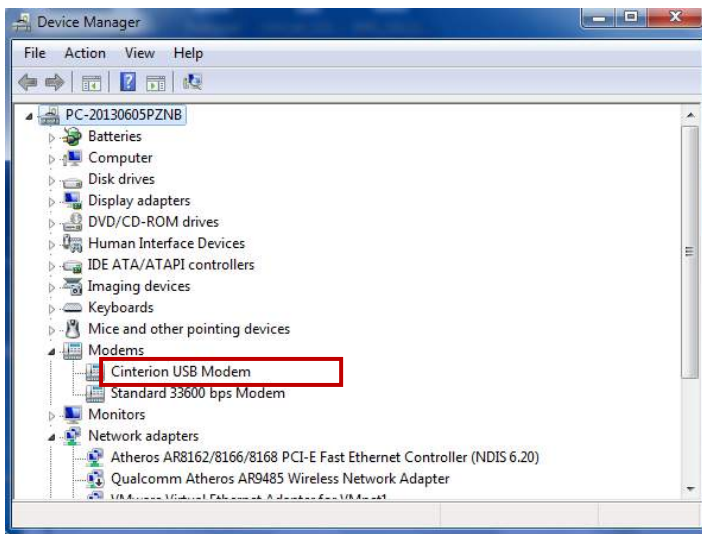
4. Click **Browse** to locate the position of the USB driver which can be found out in the CD, then click **Next**.



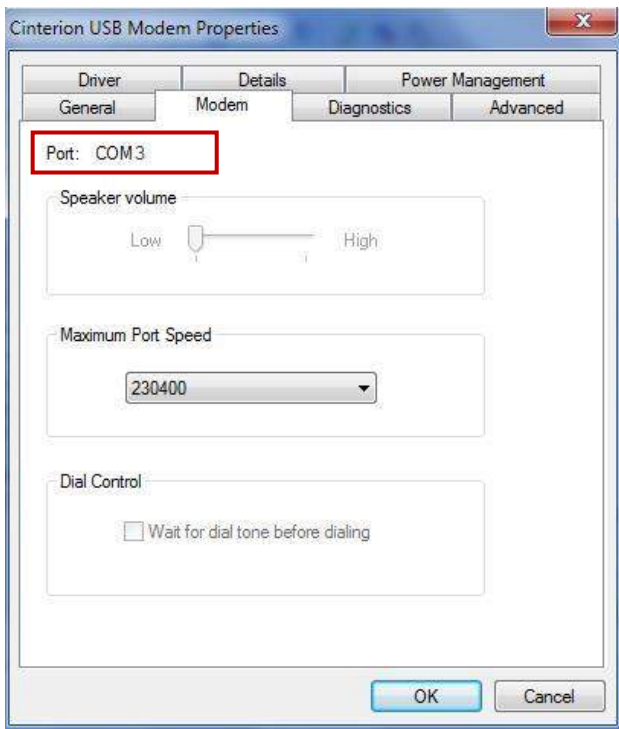
5. After succeeding to install the USB driver, it will popup the following window.



6. A simulated virtual COM port which binds to the USB interface of M1000 UP will open after USB driver has been installed. Please check "Device Manager" -> "Modems".



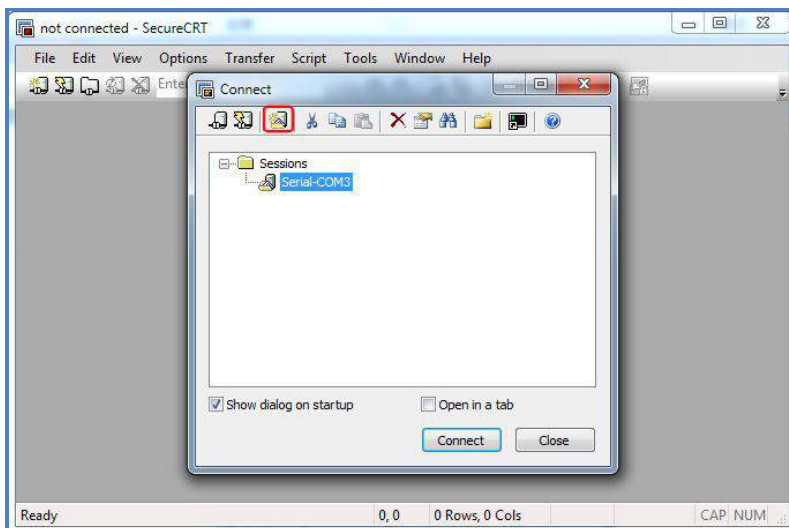
7. Select the USB modem and right-click to enter "Properties". In tab "Modem", you will find that there is simulated COM port which serial software such as secureCRT needs to connect to.



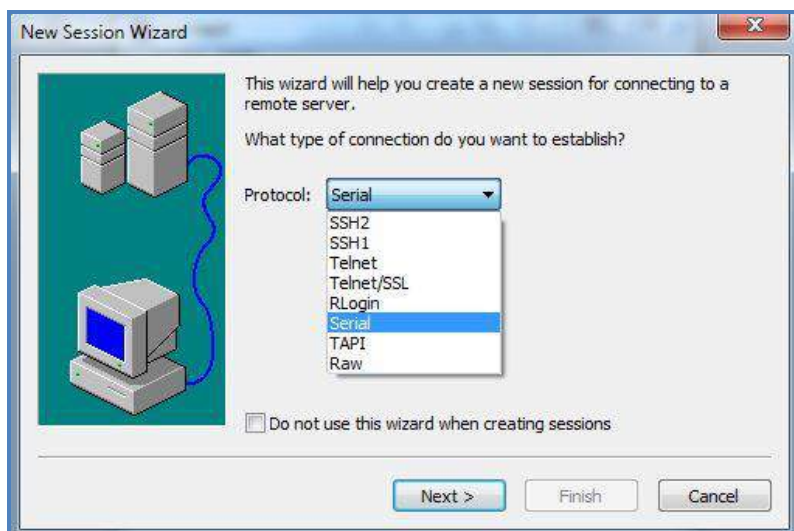
3.2 Start SecureCRT

We can enter AT commands to configure M1000 UP from serial software such as **secureCRT**, you can download this software via link: <https://app.box.com/s/arnk6xk1asgs1myvuuie>.

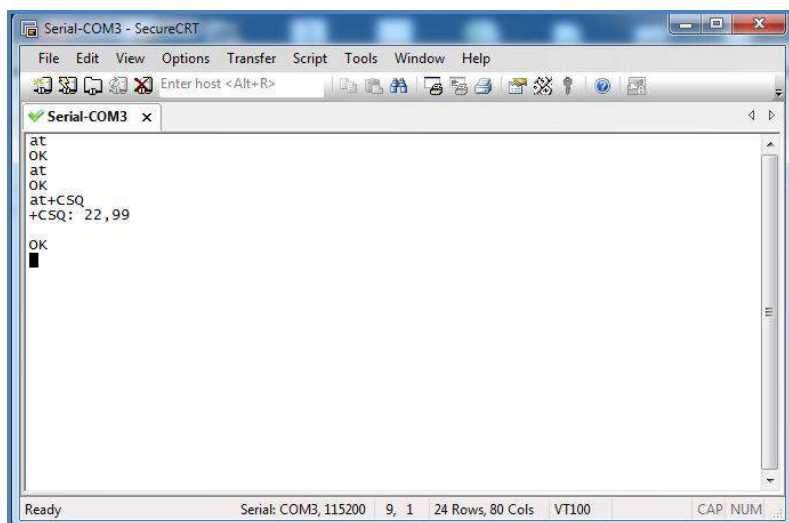
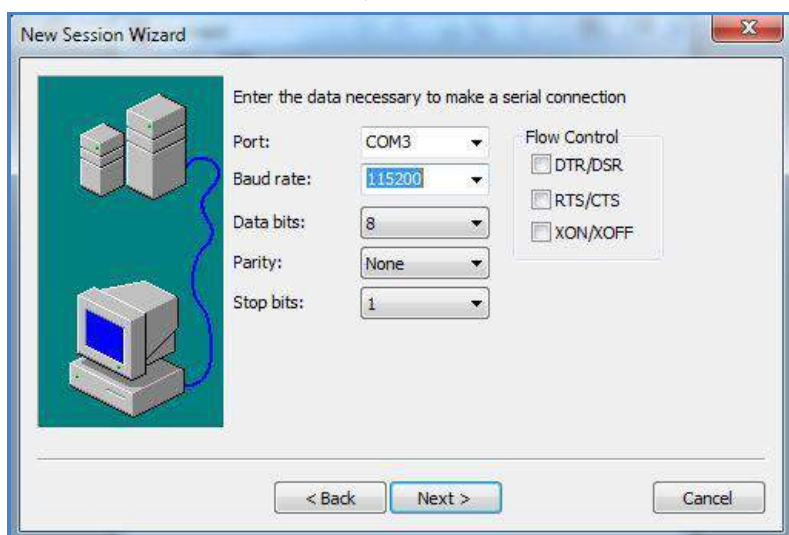
1. Double click to open SecureCRT Potable.exe .
2. File->Connect->New Session



3. Select Protocol as "Serial".



- 4. Select the simulated COM port and match the parameters as below, click the “Next” button to finish this session.
Note: You need to disable “RTS/CTS”.



Note: Please refer to *Robustel GoRugged M1000 UP User Guide* to get more details about M1000’ configuration.