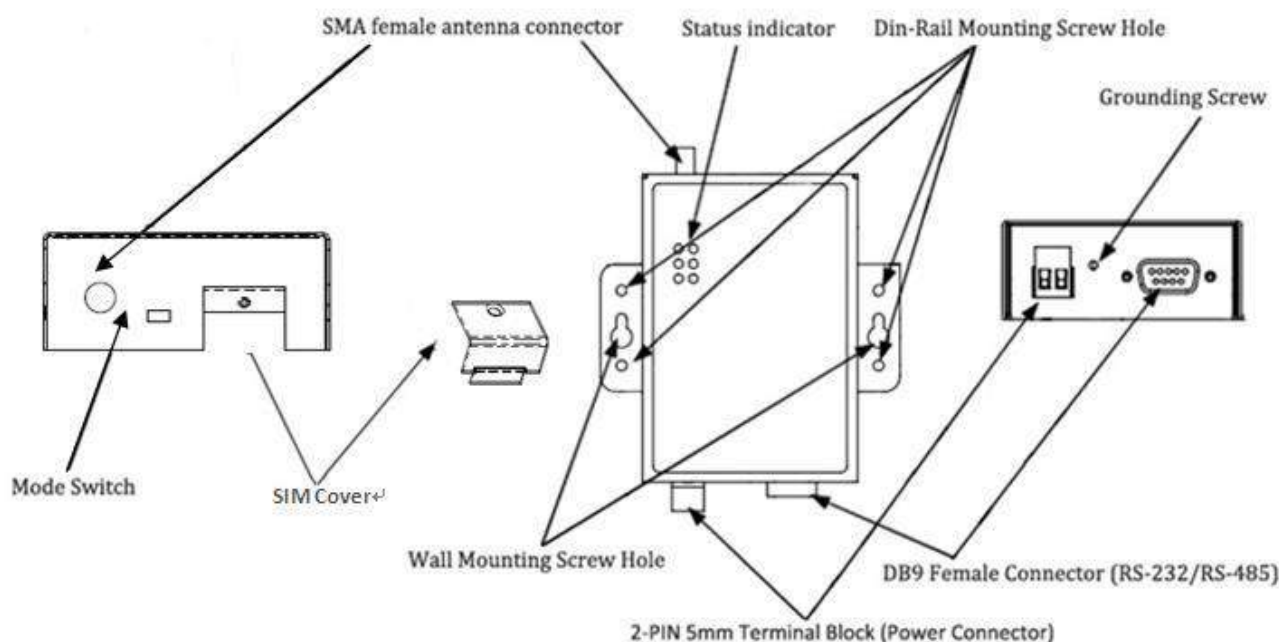


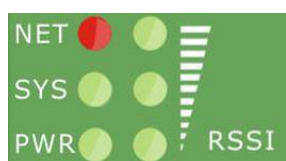
Robustel GoRugged M1000 Pro V2 Quick Guide

Chapter 1. Interface Introduction

1.1 Overview



1.2 LED Indicators

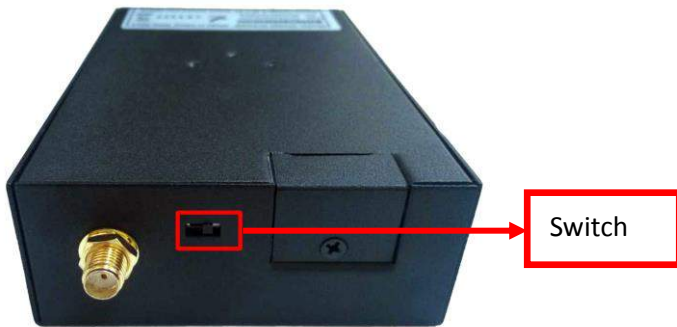


After inserting the SIM card into the modem and power on, the LED indicators' status should be as follow when work normally:

Name	Color	Status
RSSI (3 LEDs)	Green	At least two bars
NET	Red	Register to network: blinking every 3s
SYS	Green	System is running normally but without any GPRS/UMTS connection: blinking every 1s System is running normally and GPRS/UMTS connection established: blinking every 3s
PWR	Green	On when DC power connected

Note: Please refer to **Robustel GoRugged M1000 Pro V2 User Guide** to get more details about the LED indicators.

1.3 Working Mode Switch



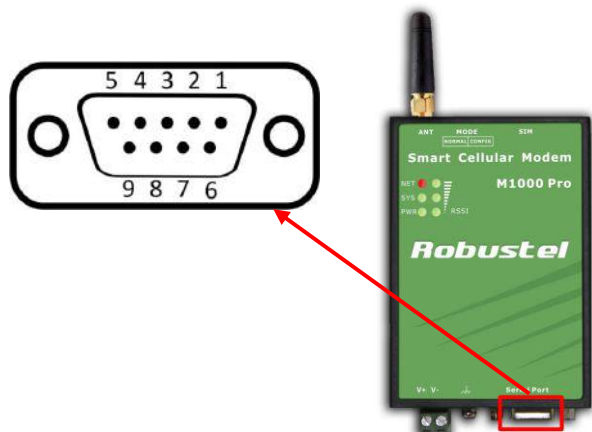
There are two working modes available in the gateway, please check carefully:

Mode	Description
Config Mode	When DIP switches to Config Mode , user could use follow functions: <ol style="list-style-type: none"> 1. Configure gateway via M1000 Pro V2 Configurator ; 2. Upgrade firmware. Serial port parameters is fixed as 115200, 8, None, 1
Normal Mode	When DIP switches to Normal Mode , user could use follow functions: <ol style="list-style-type: none"> 1. Automatic GPRS/UMTS connection (no AT commands required); 2. Wakeup by Timing/Periodical/Call/SMS/Serial Data; 3. Transparent data communication or become a Modbus gateway; 4. CSD communication. 5. Remote configuration or firmware updating. Serial port default parameters: 115200, 8, None, 1

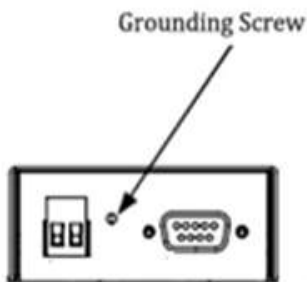
1.4 PIN assignment

PIN assignment for modem's DB9 female connector

PIN	RS232	RS485 (2-wire)
1		Data+ (A)
2	RXD ->	
3	TXD <-	
4		
5	GND	
6		Data- (B)
7	RTS <-	
8	CTS ->	
9		



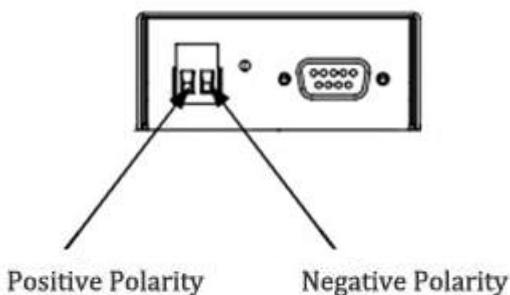
1.5 Grounding the Modem



Grounding and wire routing help limit the effects of noise due to electromagnetic interference (EMI). Run the ground connection from the ground screw to the grounding surface prior to connecting devices.

Note: This product is intended to be mounted to a well-grounded mounting surface, such as a metal panel.

1.6 Power Supply



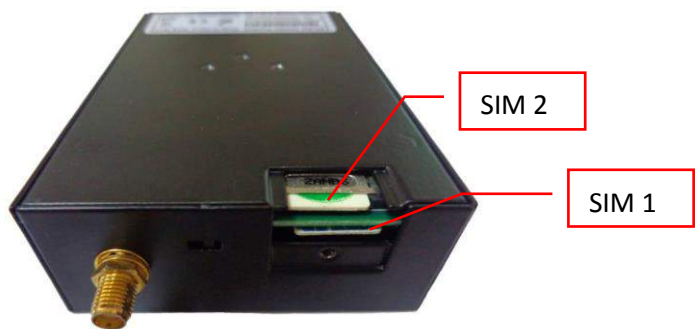
The power supply range is 9 to 36VDC.

Note: Please take care about the polarity, and do not make reverse connection.

Chapter 2. Hardware Installation

2.1 Insert/Remove SIM Card

SIM card is used for connecting to cellular network, you need buy SIM card from local operators.



Note:

1. Don't forget screw the cover for again-theft.
2. Don't touch the metal surface of the SIM card in case information in the card is lost or destroyed.
3. Don't bend or scratch your SIM card. Keep the card away from electricity and magnetism.
4. A SIM card set with PIN code cannot be used normally in the gateway without the correct PIN code.
5. Make sure to disconnect the power source from your gateway before inserting and removing your SIM card.



2.2 Connect the External Antenna (SMA Type)

Connect this to an external antenna with SMA male connector. Make sure the antenna is for the correct frequency as your GSM operator with impedance of 50ohm, and also connector is secured tightly.



2.3 Power On and Connect with PC

User can use the serial cable to connect the modem's DB9 female connector to external controller / computer.



Chapter 3. Operate the Modem

3.1 M1000 Pro V2 Configurator Overview


M1000 Pro V2 Configurator is a PC-based configuration software tool for managing and configuring Robustel M1000 Pro V2 gateway. With a full graphics mode and Windows-based environment, even first time users will find it easy to learn how to use this new software tool.

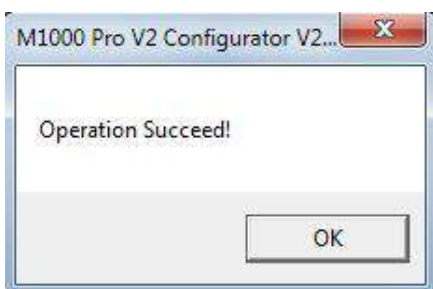
Note: M1000 Pro V2 Configurator can be used with Windows 2000/XP/Vista/7 32/64-bit operation systems.

3.2 Starting Modem Configurator via Serial interface

1. Switch the modem to "Config Mode", connect the RS-232 port of the modem to a host PC, then power on the modem.
2. Double click "Modem Configurator.exe" to start the software.

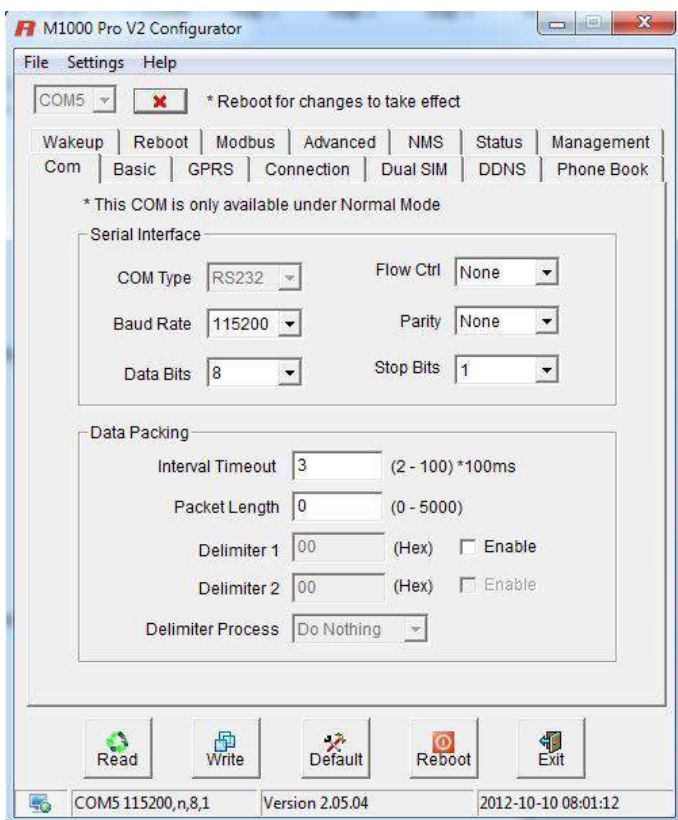


- 3. Select correct COM port, then click  button. After that you can see the popup windows “Operation Succeed”.



Note: The RS-232 connector uses standard PINOUT. A direct male DB9 to female DB9 cable can be used to connect to a PC’s serial port.

- 4. Configuring the modem via M1000 Pro V2 configurator.



Note: Please refer to **Robustel GoRugged M1000 Pro V2 User Guide** to get more details about M1000’ configuration.