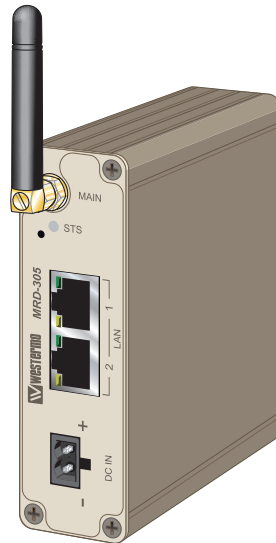


User Guide
6623-2260



MRD-305-DIN



Industrial M2M/3G Gateway/Router
GSM / GPRS / EDGE / 3G /
HSDPA / HSUPA / HSPA

www.westermo.com

Legal information

The contents of this document are provided "as is". Except as required by applicable law, no warranties of any kind, either express or implied, including, but not limited to, the implied warranties of merchantability and fitness for a particular purpose, are made in relation to the accuracy and reliability or contents of this document. Westermo reserves the right to revise this document or withdraw it at any time without prior notice.

Under no circumstances shall Westermo be responsible for any loss of data or income or any special, incidental, and consequential or indirect damages howsoever caused.

More information about Westermo can be found at the following Internet address:

<http://www.westermo.com>

Safety



Before using this unit:

Read this manual completely and gather all information on the unit. Make sure that you understand it fully. Check that your application does not exceed the safe operating specifications for this unit.

Hazardous voltages may occur within this unit when connected to a power supply.

Prevent access to hazardous voltages by disconnecting the unit from its power supply.

Prevent damage to internal electronics from electrostatic discharges (ESD) by discharging your body to a grounding point (e.g. use of wrist strap).



Before installation:

This unit should only be installed by qualified personnel.

This unit should be built-in to an apparatus cabinet, or similar, where access is restricted to service personnel only.

The power supply wiring must be sufficiently fused, and if necessary it must be possible to disconnect manually from the power supply. Ensure compliance to national installation regulations.

This unit uses convection cooling. To avoid obstructing the airflow around the unit, follow the spacing recommendations (see Installation section).

Care recommendations

Follow the care recommendations below to maintain full operation of unit and to fulfil the warranty obligations.

This unit must not be operated with covers or lids removed.

Do not attempt to disassemble the unit. There are no user serviceable parts inside.

Do not drop, knock or shake the unit, rough handling beyond the specification may cause damage to internal circuit boards.

Do not use harsh chemicals, cleaning solvents or strong detergents to clean the unit.

Do not paint the unit. Paint can clog the unit and prevent proper operation.

Do not expose the unit to any kind of liquids (rain, beverages, etc). The unit is not waterproof. Keep the unit within the specified humidity levels.

Do not use or store the unit in dusty, dirty areas, connectors as well as other mechanical part may be damaged.

If the unit is not working properly, contact the place of purchase, nearest Westermo distributor office or Westermo Tech support.

GSM specific safety

Please read and follow the guidelines listed below. The precautions must be observed during all phases of the operation. Breaking these rules may be dangerous, illegal or affect performance of the unit and/or invalidate the unit's approval and/or warranty.

General

Remember to follow any special regulations and warnings in force in any area and never use the unit whenever it's forbidden to use it. Do not use the unit when it may cause interference or danger. A wireless device exposed to interference above specified limits could result in deteriorated performance.

Hospitals or other Medical environment

Do not use the unit in a medical environment such as health care facilities. Follow any regulations or rules that instruct you to not use the unit.

Pacemakers

The Health Industry Manufacturers Association recommends that a minimum separation of six (6") inches be maintained between cellular wireless equipment and a pacemaker to avoid potential interference with the pacemaker. These recommendations are consistent with the independent research by and recommendations of Wireless Technology Research.

Persons with pacemakers:

- ⚠ Should ALWAYS keep the the unit and its antenna more than six inches from their pacemaker when the unit is turned ON.
- ⚠ If you have any reason to suspect that interference is taking place, turn your wireless equipment OFF immediately.

Hearing Aids

Some digital wireless equipment may interfere with some hearing aids. In the event of such interference, you may want to consult your service provider [or call the customer service line to discuss alternatives.]

Other Medical Devices

If you use any other personal medical device, consult the manufacturer of your device to determine if they are adequately shielded from external RF energy.-Your physician may be able to assist you in obtaining this information.

Turn the wireless equipment OFF in health care facilities when any regulations posted in these areas instruct you to do so. Hospitals or health care facilities may be using equipment that could be sensitive to external RF energy.

Aircraft

Do not use the unit in an aircraft. The use of a wireless unit in an aircraft may be dangerous to the operation of the aircraft, disrupt the wireless network, and may be illegal.

Failure to observe these instructions may lead to suspension or denial of cellular services to the offender, legal action, or both.

Vehicle

If the unit is incorrectly installed in a vehicular environment, the operation of the unit could interfere with the vehicle electronics. Faulty installation and/or operation can constitute a safety hazard.

For Vehicles equipped with an airbag

An air bag inflates with great force. DO NOT place objects, including either installed or portable wireless equipment, in the area over the air bag or in the air bag deployment area. If in-vehicle wireless equipment is improperly installed and the air bag inflates, serious injury could result.

Blasting areas

Do not use the unit where blasting is in progress or in “blasting areas”. Observe restrictions and follow any regulation or rules.

Explosive atmospheres

Do not use the unit in any area with a potentially explosive atmosphere. Potentially explosive areas are often, but not always, clearly marked. They include fuelling areas such as petrol stations, below decks on boats, fuel or chemical transfer or storage facilities, and areas where the air contains chemicals or particles, such as grain, dust, or metal powder.

RF energy

The unit is a low power radio transmitter and receiver. When it is ON, it receives and also sends out radio frequency (RF) signals. Most modern electronic equipment is shielded from RF signals. However, certain electronic equipment may not be shielded against the RF signals from the wireless unit. All radio-transmitting devices send signals, which may cause interference in different electronic devices. To avoid interference, place the units antenna a sufficiently long distance from other electronics.

Critical applications

Cellular units operate using radio signals and cellular networks cannot be guaranteed to connect in all conditions. Therefore you should never rely solely on a wireless device for essential communications, for example medical emergencies.

Backup copies

Remember to make backup copies of all important data, for example PIN/PUK codes, contents of SIM card etc.

Antenna care

Use only the supplied or an approved replacement antenna. Unauthorized antennas, modifications, or attachments could damage the unit and may violate current regulations.

Do not touch the antenna unnecessarily when the unit is in use. Contact with the antenna affects call quality and may cause the unit to operate at a higher power level than otherwise needed.

Maintenance

No maintenance is required, as long as the unit is used as intended within the specified conditions.

Agency approvals and standards compliance

Type		Approval/Compliance	
EMC		EN 55022, EN 55022 A1, Information technology equipment. Radio disturbance characteristics. Limits and methods of measurement	
		EN 55024, EN 55024 A1, EN 55024 A2, Electromagnetic compatibility – Immunity IT equipment	
Safety		IEC/EN 60950-1, IT equipment	
R&TTE	Article 3.1a	EN 60950-1	Safety
		EN 50385	EMF exposure
	Article 3.1b	EN 301 489-1	ERM/EMC
		EN 301 489-7	ERM/EMC GSM
		EN 301 489-24	ERM/EMC 3G
	Article 3.2	EN 301 908-1	ERM 3G
		EN 301 908-2	ERM 3G
EN 301 511		GSM	

Declaration of Conformity, MRD 305-DIN



Westermo Teleindustri AB

Declaration of conformity

The manufacturer Westermo Teleindustri AB
SE-640 40 Stora Sundby, Sweden

Herewith declares that the product(s)

Type of product	Model	Art no
3G Cellular Modem / Router	MRD-305-DIN	3623-0030

is in conformity with the following EC directive(s).

No	Short name
1999/5/EC	Radio equipment and Telecommunications terminal equipment (R&TTE)
2011/65/EU	Restriction of the use of certain hazardous substances in electrical and electronic equipment (RoHS)

References of standards applied for this EC declaration of conformity.

No	Title	Issue
EN 50385	Product standard to demonstrate the compliance of radio base stations and fixed terminal stations for wireless telecommunication systems with the basic restrictions or the reference levels related to human exposure to radio frequency electromagnetic fields (110 MHz - 40 GHz) - General public	2002
EN 50581	Technical documentation for the assessment of electrical and electronic products with respect to the restriction of hazardous substances	2012
EN 60950-1	Information technology equipment. Safety. General requirements	2006 +A11:2009 +A1:2010 +A12:2011 +A2:2013
EN 301 489-1 EN 301 489-7 EN 301 489-24	Electromagnetic compatibility and radio spectrum matters (ERM); Electromagnetic compatibility (EMC) standard for radio equipment and services Part 1: Common technical requirements Part 7: Specific conditions for mobile and portable radio and ancillary equipment of digital cellular radio telecommunications systems (GSM and DCS) Part 24: Specific conditions for IMT-2000 CDMA Direct Spread (UTRA) for Mobile and portable (UE) radio and ancillary equipment	2012 (V1.9.2) 2006 (V1.3.1) 2010 (V1.5.1)
EN 301 511	Global system for mobile communications (GSM); Harmonized standard for mobile stations in the GSM 900 and DCS 1800 bands covering essential requirements under Article 3(2) of the R&TTE Directive (1999/5/EC)	2003 (V9.0.2)
EN 301 908-1 EN 301 908-2	IMT cellular networks; Harmonized EN covering the essential requirements of article 3.2 of the R&TTE Directive; Part 1: Introduction and common requirements Part 2: CDMA Direct Spread (UTRA FDD) User Equipment (UE)	2013 (V6.2.1) 2014 (V6.2.1)

The last two digits of the year in which the CE marking was affixed:

15

Signature

Pierre Öberg
Technical Manager
16th September 2015

Postadress/Postal address	Tel.	Telefax	Postgiro	Bankgiro	Org.nr/ Corp. identity number	Registered office
S-640 40 Stora Sundby Sweden	016-428000 Int+46 16428000	016-428001 Int+46 16428001	52 72 79-4	5671-5550	556361-2604	Eskilstuna

Type tests and environmental conditions

Phenomena	Test	Description	Test levels
ESD	EN 61000-4-2	Enclosure contact	± 6 kV (crit A)*
		Enclosure air	± 8 kV (crit A)*
RF field AM modulated	IEC 61000-4-3	Enclosure	10 V/m (crit A)* (80 – 2700 MHz)
Fast transient	EN 61000-4-4	Signal ports	± 1 kV (crit A)*
		Power ports	± 2 kV (crit A)*
Surge	EN 61000-4-5	Ethernet ports	± 1 kV (direct) (crit B)*
		Power ports	± 0.5 kV (line to earth) (crit A)*
			± 0.5 kV (line to line) (crit A)*
RF conducted	EN 61000-4-6	All ports	10 V/m, (crit A) * (0,15 – 80 MHz)
Radiated emission	EN 55022	Enclosure	Class B
Conducted emission	EN 55022	DC power ports	Class B
		Ethernet ports	Class B
Temperature		Operating	–40 to +70°C
		Storage & Transport	–40 to +85°C
Humidity		Operating	0 to 95% relative humidity non condensing.
		Storage & Transport	0 to 95% relative humidity non condensing.
Altitude		Operating	2000 m/70 kPa
MTBF	MIL-217-F	MRD-305-DIN	1 657 805 hours
Service life		Operating	10 year
Dimension W x H x D			31 x 103 x 103 mm
Weight			0.25 kg
Degree of protection	IEC 529	Enclosure	IP40
Cooling			Convection
Mounting			Horizontal on 35 mm DIN-rail

*crit A = no effect, crit B = restart without user intervention

Description

Remote access removes boundaries, eliminates the need for time consuming site visits and provides a network infrastructure suitable for today's "always-on" society. The MRD-305-DIN industrial M2M/3G gateway/router uses the Internet to cost effectively inter-connect systems, allowing HMI, PLCs, sensors etc to communicate with each other.

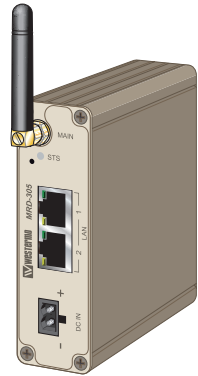
A compact case design with a power input range between 10 to 36 VDC make the unit well suited for industrial applications. Easy integration with other devices is achieved using the built-in two port Ethernet switch.

The stability of mobile connections can be affected by various different parameters and in order to ensure constant connectivity the MRD-series features a connection manager.

The MRD-305-DIN offers network protection from malicious eavesdroppers via encrypted communication tunnels (VPN), and features a simple, yet powerful, packet inspection firewall.

The requirements and needs vary between different types of M2M applications. Sometimes all that is needed is a reliable gateway to the internet as all the intelligence may be located in other devices in the system. Whereas other applications might have simpler devices that need to be securely connected to each other, or a server, via a VPN. Regardless of which type of M2M application you might have the MRD-305-DIN from Westermo can fulfill your communication needs. The unit works very well with any type of SIM card, such as static IP SIM, M2M SIM, or an off-the-shelf SIM in both packet mode or circuit switched data (CSD) mode.

Configuring the unit is very easy with the built-in web-interface, no need for special AT-commands or similar. The device can also provide both management and monitoring via SMS, for example an SMS could be sent to start a VPN.



Interface specifications

Power				
Rated voltage	12 – 24 VDC			
Operating voltage	10 – 36 VDC			
Start-up current (max)	400 mA			
Rated frequency	DC			
Consumption guidance*	Voltage	Mode	Consumption	
	24 VDC	Not registered	44 mA	1.056 W
	24 VDC	GSM and UMTS registered	50 mA	1.2 W
	24 VDC	GSM XMIT average	69 mA	1.656 W
	24 VDC	GSM XMIT peak	110 mA	2.64 W
	24 VDC	UMTS XMIT average	68 mA	1.632 W
	24 VDC	UMTS XMIT peak	68 mA	1.635 W

* For example purpose only. Hard to predict exact values since there are a lot of factors that affect the power consumption, such as signal strength. Example measurement was carried out in-doors in a 25°C room with "normal" signal strength.

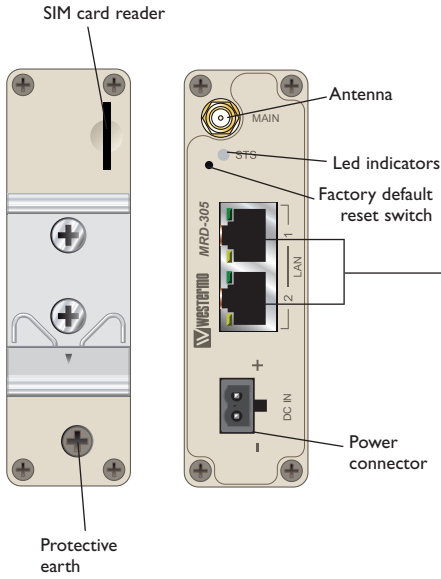
Ethernet TX	
Electrical specification	IEEE std 802.3. 2005 Edition
Data rate	10 Mbit/s, 100 Mbit/s, manual or auto
Duplex	Full or half, manual or auto
Circuit type	SELV
Transmission range	100 m/328 ft
Isolation to	All other
Connection	RJ-45 auto MDI/MDIX
Shielded cable	Not required, except when installed in Railway applications as signalling and telecommunications apparatus and located close to rails.*
Conductive housing	Yes
Number of ports	2

* To minimise the risk of interference, a shielded cable is recommended when the cable is located inside 3 m boundary to the rails and connected to this port. The cable shield should be properly connected (360°) to an earthing point within 1 m from this port. This earthing point should have a low impedance connection to the conductive enclosure of the apparatus cabinet, or similar, where the unit is built-in. This conductive enclosure should be connected to the earthing system of an installation and may be directly connected to the protective earth.

SIM	
Electrical specification	3 volts SIM supported
Number of slots	1

Antenna					
Mobile/ Cellular Technology	Max Connectivity Speed			Frequency (MHz)	
	Downlink	Uplink	Note		
GSM	14.4 kbit/s	14.4 kbit/s	–	850/900/1800/1900	
GPRS	85.6 kbit/s	85.6 kbit/s	Class 12		
EDGE	236.8 kbit/s	236.8 kbit/s	Class 12		
3G UMTS	384 kbit/s	384 kbit/s	–	850/900/1900/2100	
HSDPA	7.2 Mbit/s	–	Cat 8		
HSUPA	–	5.7 Mbit/s	Cat 6		
Antennas	Transmit (TX)	Receive (RX)	Required	Label	Connector
Main Antenna	YES	YES	YES	MAIN	SMA

Connections MRD-305-DIN



Ethernet TX Connections (RJ-45 connector) LAN1-2

Position	Direction	Description
1	In/Out	TD+
2	In/Out	TD-
3	In/Out	RD+
4	-	Not Connected
5	-	Not Connected
6	In/Out	RD-
7	-	Not Connected
8	-	Not Connected

LED Indicators

LED	State	Status	Description
STS	Startup/POST	NOT LIT	Power issue
		RED	Normal
	Running/Normal	RED FLASH	Cannot connect to wireless network
		GREEN	Everything OK

Status Indicator

The status indicator reports the health of the unit. In normal operation, the indicator will be GREEN, if a fault is detected either at boot-up or during normal operation the indicator will light RED, or flash RED. When the unit is first switched on or is reset, the indicator will first light RED, this is normal behavior during boot-up and does not indicate a fault. If the indicator does not light up when power is applied check the power supply voltage and connections.

Factory Default Reset Switch

The reset switch is used to restore the configuration of the MRD to factory default settings. The switch is accessed through a small hole on the rear of the unit adjacent to the power connector.

To reset the configuration:

- Power down the unit.
- Use a suitable tool and depress the reset switch.
- Power up the unit ensuring the switch remains depressed for approximately 10 seconds after power is applied. The STS LED will flash twice to indicate a reset.
- The router will now re-boot as normal with the factory default settings.

Note: Using the Factory Default Reset Switch will erase all existing configuration settings and restore the factory default settings. This includes the network connection profile settings APN, user name and password.

Protocols and Functionality MRD-305-DIN

Ethernet Technologies	IEEE 802.3 for 10BaseT IEEE 802.3u for 100BaseTX
Cellular Technologies	Circuit Switched Data mode (CSD) GSM GPRS Multi-slot class 12, mobile station class B, PBCCH support, coding schemes CS 1-4 EDGE Multi-slot class 12 (max 236.8 kbit/s), mobile station class B, modulation and coding scheme MCS 1-9 3G (WCDMA/UMTS) 384 kbit/s downlink/uplink HSUPA up to 5.7 Mbit/s uplink HSDPA up to 7.2 Mbit/s downlink
Layer-2 QoS	IEEE 802.1p Class of Service
IP Routing, Firewall, VPN and Cyber Security	Static IP routing Stateful inspection Firewall/ACL, NAT, Port Forwarding 1 x IPsec VPN, PSK & X.509 1 x OpenVPN/SSL VPN client 1 x WeConnect RADIUS PPP Dial in/Dial out
Manageability	Management tools <ul style="list-style-type: none"> • Web interface (HTTP and HTTPS) • Command Line Interface (CLI) via SSHv2 and TELNET • SNMPv1/v2c/v3 • SMS Control Flexible alarm/event handling system Syslog (log files and remote syslog server) SNTP (NTP client) DHCP client DHCP server DDNS (Dynamic DNS update client)

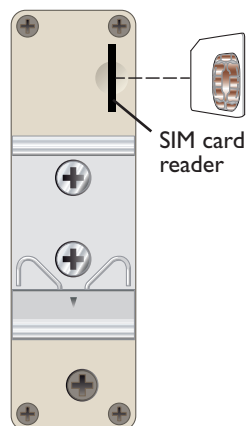
For more information, please refer to the Reference Guide on the product website.

Getting started

Installing the SIM Card

- Insert the SIM card into the SIM card reader with the contacts facing up.

Note: Before removing or inserting the SIM card, ensure that the power has been turned off and the power connector has been removed from the MRD.



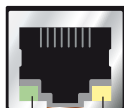
Connecting the Antenna(s)

The unit has one antenna connector (SMA). Please ensure that the connecting nut is done up tightly in order to make a good connection.

Connect the Power Supply

Connect the Power Supply The MRD requires a DC power source in the voltage range of 10 to 36 VDC. The unit is designed to self protect from permanent damage if the voltage exceeds 36 VDC or if reverse polarity is applied. The router may need to be returned for service if this occurs. The router can also be damaged if there is any potential difference between the chassisground, power (–) input, or antenna shield. Before connecting any wiring, ensure all components are earthed to a common ground point. An external isolator will be required if a positive earth power supply is used.

Ethernet



LAN 1

Connection speed LED

Activity LED

The Ethernet ports are on the front of the unit and are marked LAN 1 and LAN 2, each port has a LED indicating the connection speed and a LED indicating activity as shown in figure below. Both ports are capable of auto-negotiation, meaning cross-over cables are not required. The Ethernet ports are switched, allowing more than one Ethernet device to be connected to the unit at one time.

Configuration

Accessing and Using the Web Interface

All configuration of the MRD can be done via the web interface. In order to view the web pages a computer with a fixed IP address, on the same sub-net as the MRD, will need to be connected to one of the LAN ports.

The default IP settings of the MRD are:

- IP Address: 192.168.2.200
- Netmask: 255.255.255.0

The recommended IP settings for the PC used to configure the MRD Router:

- IP Address: 192.168.2.100
- Netmask: 255.255.255.0
- Default Gateway: 192.168.2.200
- Primary DNS: 192.168.2.200

Note: Although it is possible to connect the MRD directly to a Local Area Network (LAN) it is recommend that the network configuration as described in this section is performed prior to doing so. The DHCP server of the unit is by default disabled.

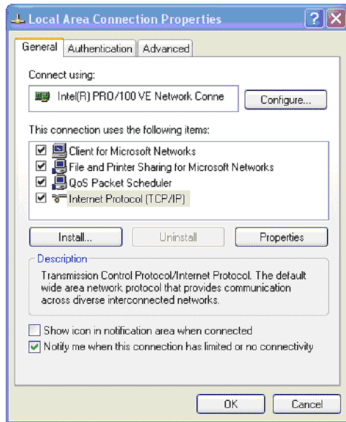
Windows PC Network Settings

The following describes how to configure the network settings of a Windows PC so that it can access the MRD.

Note: This procedure will change the network settings of the Windows PC, if the PC is connected to a network the connection should be removed before performing the changes. To restore the network, settings of the PC record the current settings at Step 6 in the following procedure, then when the MRD has been configured, follow the procedure again and use the recorded values at Step 6.

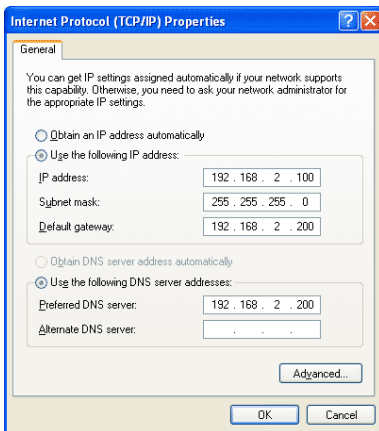
1. Open the Control Panel by selecting Start > Control Panel.
2. Double click the Network Connections icon.
3. Double click the Network icon.
4. The Local Area Connection Status dialog box will be displayed, click the Properties button.
5. The Local Area Connection Properties dialog box, as shown in Figure 1, will be displayed
Click on Internet Protocol (TCP/IP) to highlight it and then click the Properties button.

Figure 1



6. The Internet Protocol (TCP/IP) Properties dialog box, change the settings to match those shown in Figure 2, and then click "OK."

Figure 2



Note: If a web browser was open prior to making the network changes, then it will need to be closed and re-started before attempting to connect to the MRD.

Accessing the MRD

- Open a web browser on the PC and browse to <http://192.168.2.200> (the default MRD, IP address) .
- A login box will popup. If the box fails to display, re-check the cable connections to the unit and the IP address settings of the PC.

Enter the following login details:

- User Name: **admin**
- Password: **westermo**

- The Status summary page will be displayed, it will be similar to Figure 3.

Figure 3

Status	System	Wireless	Network	Routing	Firewall	VPN	Serial Server
Alarms	Wireless	LAN	VPN	Serial Server	System Log		
Logged in as admin Host: MRD-310-e0-00-01							
Alarms 10:00:28 30/09/2008							
System							
Power On Self Test							Passed
Temperature (°C)	now: 38.00, min: 38.00, max: 38.25						
Uptime	00:03:52						
Wireless							
Network Status							Fault
Connection Status							Fault
Network							
LAN							No Fault
Services							
DHCP Server							Disabled
VPN							Disabled
Serial Server							No Fault

Note: If the unit is not yet configured it is likely that the Network Status and Connection Status will indicate a fault condition. This is normal.

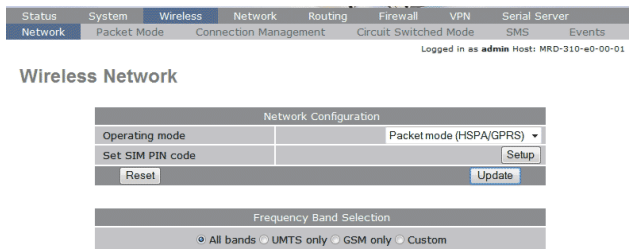
Basic Configuration

The three sections below detail the steps needed to configure the MRD for basic packet mode functionality. For details on how to configure the unit for Circuit Switched mode and for more advanced configuration refer to the Advanced Configuration section of the Reference Guide.

Configure the Wireless interface

To access the configuration page for the Wireless interface, click on Wireless. The Basic Wireless configuration page will be displayed as shown in Figure 4.

Figure 4



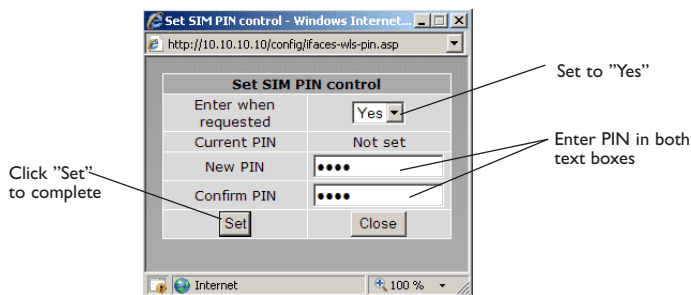
Network Configuration

The "Network Configuration" section contains the settings for the operational mode and the frequency band of the unit, the default settings will usually be adequate to connect the MRD to a packet based network.

Setting the SIM card PIN

The SIM card may have a PIN associated with it and may require the PIN to be entered before the unit can access the SIM. To set the SIM PIN click Setup. A dialog box as shown in Figure 5 will be displayed.

Figure 5



Set the field marked "Enter when requested" to "Yes" and enter the PIN in the "New PIN" and "Confirm PIN" entry boxes. Then click the "Set" button to save the PIN.

Adding a Network Connection Profile

To access the wireless packet mode settings click on the "Packet mode" tab. The screen shown in Figure 6 will be displayed. The page shows the connection configuration details and is divided into two sections. The first section shows the current connection state for the selected profile. The second section lists the available profiles. A connection profile contains the settings required to connect to a provider's network. The unit allows multiple profiles to be configured to allow quick changes to the network connection settings. For most applications only one profile is required.

Figure 6

Network Packet Mode Connection Management Circuit Switched Mode SMS Events

Logged in as admin Host: MRD-310-e0-00-01

Packet Mode

Connection Configuration

Connection state	Disabled
Current profile	---

Reset Update

Index	APN	Dial String	Authentication	Username	Password	Edit	Delete
No profiles configured.							

Add new profile

The 3G network provider will provide the items listed below which should be entered into the appropriate fields in the "Add new profile" section as shown in Figure 7.

- APN (Access Point Name)
- Dial string
- Authentication (None/PAP/CHAP)
- Username
- Password

Figure 7

Status	System	Wireless	Network	Routing	Firewall	VPN	Serial Server
Network	Packet Mode	Connection Management	Circuit Switched Mode	SMS	Events	Logged in as admin Host: MRD-310-e0-00-01	

Packet Mode

Add new profile

APN	<input type="text"/>	
Dial String	<input type="text" value="*99#"/>	
Authentication	<input type="text" value="None"/>	None <input checked="" type="checkbox"/>
Username	<input type="text"/>	
Password	<input type="text" value="Not set"/>	New: <input type="checkbox"/>

Enter APN

Enter dial string

Set Authentication

Enter username

Enter password

Click "Update" to save profile

Note: In order to set a password click the check-box marked New. The password can now be entered in the text field. The password is visible as it is being typed so that it can be checked for errors prior to being set. Once set the password will no longer be visible.

Note: The provider may not supply a username and password if network authentication is not required. In this case set the Authentication to "None", leave the username blank and do not set a password.

Once the data has been entered click the "Update" button to add the profile. The screen will now change to show the added profile. As this is the only profile entered it will be automatically selected as the current profile and the profile entry will be shaded green to indicate that it is the selected profile.

Enable the Wireless Connection

To complete the configuration of the wireless connection, set the "Connection state" to "Always connect" and click the "Update" button to save the changes. Once the changes have been set, the MRD will initiate a connection. Normally it will take up to 30 seconds to establish a connection. Figure 8 shows the completed wireless configuration.

Figure 8

Status	System	Wireless	Network	Routing	Firewall	VPN	Serial Server
Network	Packet Mode	Connection Management	Circuit Switched Mode	SMS	Events	Logged in as admin Host: MRD-310-e0-00-01	
Packet Mode							
Connection Configuration							
Connection state		Always connect ▼					
Current profile		1 ▼					
<input type="button" value="Reset"/>		<input type="button" value="Update"/>					
Index	APN	Dial String	Authentication	Username	Password	Edit	Delete
1	online.telia.se	*99#	None		Not set		
<input type="button" value="Add new profile"/>							

Checking the Status of the Connection

To check the status of the connection select "Status" from the top level menu and then select "Wireless" from the second level menu. The Wireless status page will be displayed which will look similar to the one shown in Figure 9. The status of the connection will change as the router connects to the network, first it will report "Checking" then "Connecting" and finally "Connected". To see the value changing the page will need to be reloaded.

Figure 9

Status	System	Wireless	Network	Routing	Firewall	VPN	Serial Server
Alarms	Wireless	LAN	VPN	Serial Server	System Log	Logged in as admin Host: MRD-310-e0-00-01	

Wireless

Network Status	
Network Registration	Yes
RF Level (RSSI)	13 / 30 (-87 dBm)
Provider	Telia UMTS (Location: 0018 / Cell ID: 1061)
Connection Status	
Status	Connected
Current Session Time	19:49:34
Total Session Time	19:49:34
IP Address	90.235.6.205
Packets Received	0
Bytes Received	0 B
Packets Transmitted	0
Bytes Transmitted	0 B

Configure the LAN interface and DHCP Server

To access the configuration page for the LAN interface and DHCP Server, select "Interfaces" from the top level menu. A LAN interface screen similar to the one shown in Figure 10 will be displayed.

Figure 10

Status	System	Wireless	Network	Routing	Firewall	VPN	Serial server
LAN	DNS	Diagnostics					

Logged in as admin Host: MRD-310-e0-00-01

LAN

Interface Configuration	
Enabled	<input checked="" type="checkbox"/>
IP Address	192.168.2.200
Netmask	255.255.255.0

DHCP Server Configuration	
Enabled	<input type="checkbox"/>
Start address	192.168.2.210
End address	192.168.2.240
Default lease time (mins)	1440
Maximum lease time (mins)	1440

Setting the IP Address

If it is desired to change the IP address of the LAN port, follow the steps below:

- Enter the new IP address and netmask in the "Interface Configuration table".
- Click Update to set the changes. Once the changes have been set, the IP address of the MRD will change. Enter the new address in the browser on the PC. It will be necessary to login again, following the procedure described in the previous section.

Enabling DHCP

The DHCP server allows clients on the local network to be automatically allocated IP addresses from the MRD. The unit will also provide the clients with network settings like their default route and DNS servers. By default the DHCP server is disabled but if enabled it will be configured to serve IP addresses in the range 192.168.2.210 through 192.168.2.240, and the Default and Maximum lease times have been set to 1440 minutes. So if these values are consistent with the network that the MRD is connected to, then the DHCP can be enabled by setting the Enabled field to Yes and clicking the Update button.

If the standard settings are not applicable for the connected network, then refer to Figure 10 and follow the steps below, to configure the DHCP server:

- Choose a group of available IP addresses on the local network. For example, if the IP address of the MRD-355 is 192.168.2.200 with a netmask of 255.255.255.0, a group chosen could be 192.168.2.100 to 192.168.2.150. This will provide 51 addresses for clients.

Under the "DHCP Server Configuration table":

- Set the "Enabled" option to "Yes".
- Enter the first address of the group in the "Start Address box".
- Enter the last address of the group in the "End Address box".
- Enter a lease time for the "Default Lease time".
- Enter a lease time for the "Maximum Lease time".
- Click "Update" to set the changes.

Figure 11

LAN

Interface Configuration	
Enabled	<input checked="" type="checkbox"/>
IP Address	192.168.2.200
Netmask	255.255.255.0
DHCP Server Configuration	
Enabled	<input checked="" type="checkbox"/>
Start address	192.168.2.210
End address	192.168.2.240
Default lease time (mins)	1440
Maximum lease time (mins)	1440
Reset	Update

Logged in as admin Host: MRD-310-e0-00-01

Check to enable DHCP server

Set the DHCP IP address range

Set the DHCP default lease time

Set the DHCP max lease time

Click "Update" to save changes

Configure clients to use the MRD as their gateway

The MRD will act as a gateway for connections destined over the wireless interface. The default configuration will provide Network Address Translation and firewalling to protect clients on the local network.

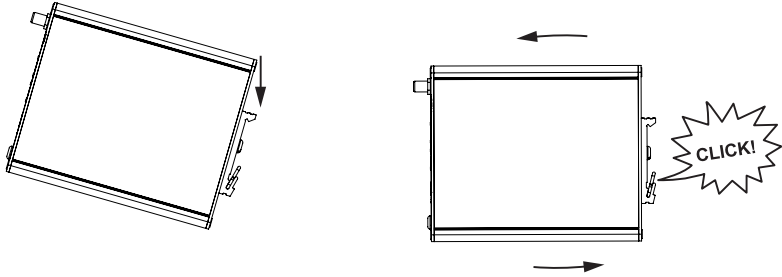
To configure clients to use the MRD as their gateway:

- If the clients have a DHCP address allocated by the MRD, they will have learned the necessary settings. No further configuration is needed.
- If clients have static IP addresses, set their default route and DNS server to the IP address of the MRD.

Mounting

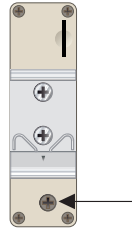
The MRD-305-DIN should be mounted on 35 mm DIN-rail, which is horizontally mounted inside an apparatus cabinet or similar. Snap on mounting, see figure.

Mount the MRD-305-DIN with the integrated DIN-clip:



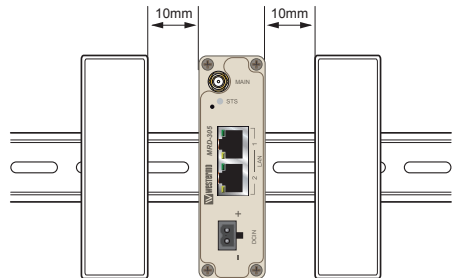
Earth connection

For correct function, the ground connection on the unit needs to be properly connected to a solid ground. See figure.



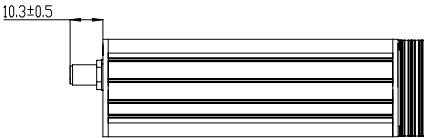
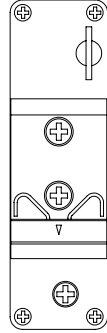
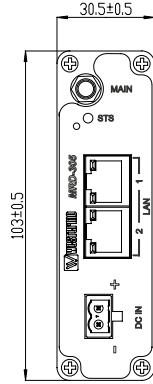
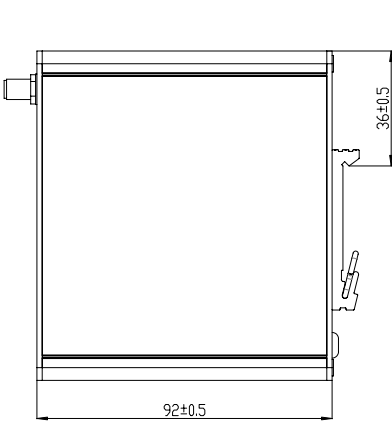
Cooling

The router should be mounted in a clean and dry location, protected from water, excessive dust, corrosive fumes, extremes of temperature and direct sunlight. Allow sufficient ventilation to ensure adequate cooling of the router.



Dimensions MRD-305-DIN

Measurements are stated in millimeters.





Westermo • SE-640 40 Stora Sundby, Sweden
Tel +46 16 42 80 00 Fax +46 16 42 80 01
E-mail: info@westermo.com
www.westermo.com

Sales Units

Westermo Data Communications

China

sales.cn@westermo.com
www.cn.westermo.com

France

infos@westermo.fr
www.westermo.fr

Germany

info@westermo.de
www.westermo.de

North America

info@westermo.com
www.westermo.com

Singapore

sales@westermo.com.sg
www.westermo.com

Sweden

info.sverige@westermo.se
www.westermo.se

United Kingdom

sales@westermo.co.uk
www.westermo.co.uk

Other Offices



For complete contact information, please visit our website at www.westermo.com/contact or scan the QR code