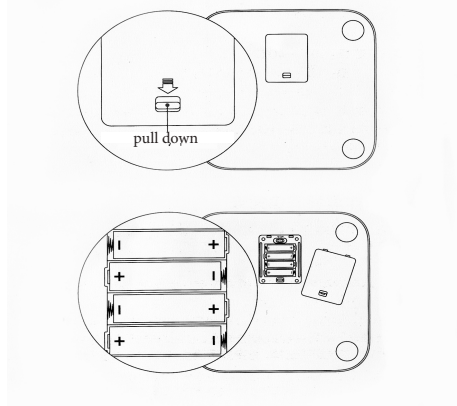


Xiaomi Smart Scales

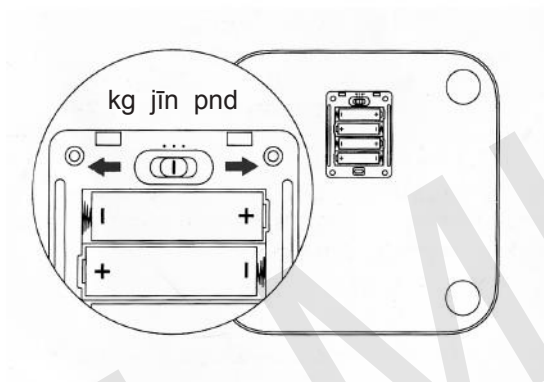
Battery Installation

On image, which is below, shown how to open unit cover for the battery. Then place 4 batteries in the unit. Pull down the button cover



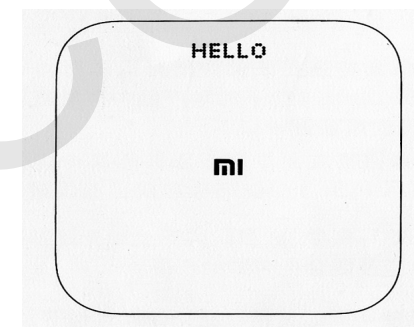
Setting unit for weight measurement

You can adjust and set required unit for weight measurement by moving to the right, left, Mi scales can measure weight in kg, jīn and pounds.



Getting Started

After installing batteries, close the cover and set scales in a stable, level ground. Wait until on scale appears «HELLO», and then you can stand on it. Once on the scales numbers will flash, it means that your weight is defined. To ensure accurate measurements, do not set scales on carpets, rugs, or other soft surfaces.



Installing «Mi Fit» APP on your mobile

To download and install the application «Mi Fit» for scales on mobile, in Mi Store or Apple Store find «Mi Fit» or scan QR-code.

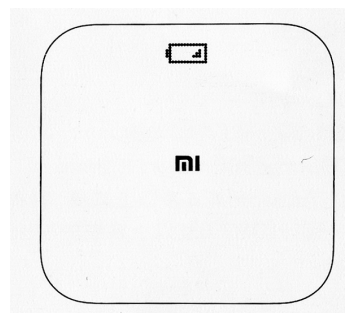


Attention! You need to login to your Mi-account.
Register there:
<http://i.mi.com>

Pairing scales with mobile

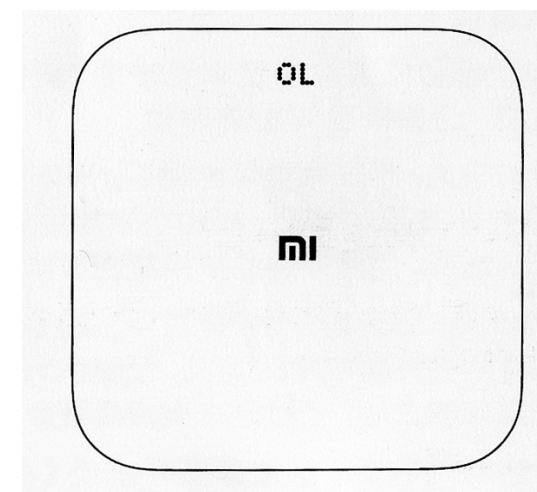
Switch on scales application «Mi Fit», basing on the registration number of Mi scales connect it to mobile. After pairing, you can save results in the «cloud» check your weight on your phone and history of weighing.

If during weighing battery icon appears with a small charge, which you see on a picture below, please change them immediately.



Meaning of symbols (characters)

If scales will flash OL (see picture below), this means the excess of the maximum weight 150 kg.



Cautions

- * Do not install scales on a slippery, wet surface, and do not stand on scales with wet feet to avoid falling.
- * While weighing get with your both feet on the middle of scales to avoid them overturned.
- * Surface is made of glass, so do not drop any items on scales, not to break them down or to damage.
- * Use scales only on a dry surface, can not be immersed in water.
- * Use wet and clean towel (cloth) to wipe the surface of scales, avoid contact with organic solvents, and other chemicals.
- * After batteries are fully discharged, immediately remove them from scales, to avoid battery leakage and corrosion of scales body.

Warranty

3. Within 12 months from the date of purchase, in case of a problem of «fault list» service center Xiaomi defines the problem, after which you are given a free repair.

XIAOMI-MI.COM

Основные характеристики

Weight range: 5-150kg
The lowest value of division: 50g
Net weight: 1,9kg
Weighing units: kg, pnd, jin
Surface material: tempered glass
Bottom surface material: ABS
Operating temperature: 10-40C
Power: 1.5W 4 AA batteries
Size: 300mm x 300mm x 28.2mm

Requirements: Android 4.4 system and higher, support for Bluetooth 4.0 Mi phone; iOS 7.0 system and iPhone 4s / 5 / 5c / 5s / 6/6 Plus and above.

Fault list

Product Name	List of faults
Scales Mi	Scales Mi Malfunction functions described in manual misincorporated weighing device or screen does not light up / misspelled words (characters) / it can not synchronize data leakage cracks due to construction or material devices

Conditions are not covered by warranty

- Damages caused by (because of) unauthorized repair, improper use, falling objects, water ingress, accidents, alteration, misuse, or if, due to software installation problems arises with the device; or if broken, changed tags or serial number;
- The warranty period has already expired;
- Damage caused by force majeure;
- Did not match to Xiaomi service center «fault list».

Warranty

Warranty service is carried out in accordance with the law on «rights of consumers of China» and «Law of the PRC on the quality of products.» The warranty service includes:

During warranty period you have right for repair, exchange or to return product. For repair, replacement or returned goods you need to submit a receipt.

1. Within 7 days from the date of purchase, in case of a problem of «fault list» service center Xiaomi determines cause of the problem, then you can choose a free replacement of product, return or repair.
2. Within 8-15 days from the date of purchase, in case of a problem of «fault list» service center Xiaomi defines the problem, and then you choose a free replacement or repair of the product.

Presence of toxic and hazardous substances

Name	Toxic and hazardous substances or elements					
	Pb	Hg	Cd	CrVI	PBB	PBDE
Mi Scales	x	0	0	0	0	0

O: toxic and harmful substances in all components of the device contained in an amount below the limit of value according to SJ / T11363-2006 «requirements limiting the presence of toxic and hazardous substances in products.»

X: indicates the presence of toxic and hazardous substances in at least one of the components in this product in excess of the limit, according to SJ / T11363-2006 «requirements limiting the presence of toxic and hazardous substances in products.»

This product complies to the European RoHS requirements and regulations for the protection of the environment; international countries still can not replace or reduce the aluminum content in copper alloy.