

How to use the RAMDISK Utility

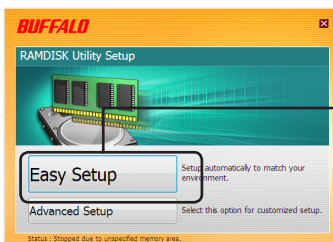
RAMDISK is software that uses some of the memory in your computer as a virtual hard drive or “RAM drive”. The RAM drive is recognized as a hard drive by your computer, and you can read and write data to it like any other drive. Because reading and writing to RAM is much faster than reading and writing to a regular hard drive, your software may run much faster when using RAMDISK.

Notes

- The message “Windows can’t verify the publisher of this driver software” may be displayed while installing this software. If this happens, select [Install software].
- Buffalo recommends that you back up data stored in the RAM drive. Any data stored in the RAM drive is erased whenever your computer is turned off or rebooted. Backup software is included with this product. Buffalo Technology is not responsible for lost data.
- Your computer needs at least 1 GB of memory to use RAMDISK.
- Your computer will recognize the RAM drive as a hard drive named BFRD-DRIVE.
- The size of RAM drive that you can create will depend on your computer.
- Log in with an administrator account to install, uninstall, or configure this software.
- This software is for the 64 bit and 32 bit versions of Windows 7 and Windows Vista and the 32 bit versions of Windows XP.

Installation and configuration

During installation, you can choose [Easy Setup] or [Advanced Setup]. To change settings after installation, go to [Start] > [(All) Programs] > [BUFFALO] > [RAMDISK Utility] > [RAMDISK Utility].



Click [Easy Setup].
Or, click [Advanced Setup] for more detailed choices.

•Easy Setup

The wizard will install RAMDISK for you automatically with default settings.

•Advanced Setup

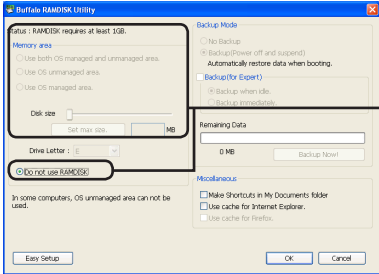
You will be allowed to change many of RAMDISK's default settings during configuration. For advanced users only.

Advanced Settings

To change RAMDISK's configuration settings, use [Advanced Setup]. Or, if you used [Easy Setup] already, click [Configuration] to get to the Advanced Settings screens below.

Memory Used

Select the memory area and capacity for RAMDISK from the choices below.



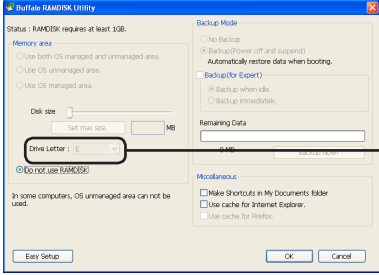
Select

Use both OS managed and unmanaged area	Allocates all memory not managed by Windows, and also part of the memory managed by Windows, to your RAM drive.
Use OS unmanaged area	Assigns the memory that Windows cannot manage to your RAM drive .
Use OS managed area	Assigns some of the memory managed by Windows to your RAM drive .
Do not use RAMDISK	Disables RAMDISK.

- All data in the RAM drive is deleted when memory settings are changed. Even if backup is configured, this data is not recovered when the computer is rebooted.
- Space for system memory is reserved by Windows and cannot be assigned to RAMDISK.

Drive Letter

Select a drive letter to assign to your RAM drive.



Select a drive letter.

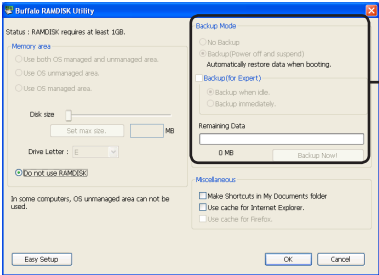
Go to Next Page

2 | RAMDISK

Backup

You can back up data stored on your RAM drive.

- If backup is not enabled, all data saved on the RAM drive will be erased when you turn off or reboot your computer.
- Backup data is saved in a hidden folder on your computer's hard drive. Data cannot be recovered manually.



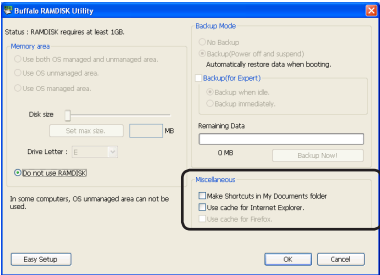
Select [Backup], or [Backup (for Expert)] for more options.

No backup	Data on the RAM drive will not be backed up. All data saved on the RAM drive will be erased when you turn off or reboot your computer.
Backup (Power off and suspend) Automatically restore data when boot.	A backup is stored when the computer is turned off or put into sleep or hibernation mode. Backed up data will be restored when the computer is restarted.
<p>[Backup (for Expert)] gives you more options. You can choose to refresh the backup data when the computer is not accessed for a while, or when it writes to the RAM drive.</p> <p>[Remaining Data] is the amount of data on the RAM drive that is not yet backed up.</p> <p>Click [Backup Now!] to back up all data on the RAM drive.</p>	

Go to Next Page

Configuration

Configure RAMDISK as below.



Select a setting to configure.

Make “My RAMDISK” in My Documents folder

Puts a RAMDISK icon in your My Documents folder.

Use cache for Internet Explorer.

Uses RAMDISK for Internet Explorer's cache. Since RAMDISK is faster than most hard drives, this may give you faster performance from IE.

Use cache for Firefox.

Uses RAMDISK for Firefox's cache. Since RAMDISK is faster than most hard drives, this may give you faster performance from Firefox.

After setup is complete, the RAM drive that RAMDISK created is recognized as another drive in [(My Computer)]. You can read and write data to and from it like any other hard drive.