

sailing 3

Leading steps build
Elites' choice





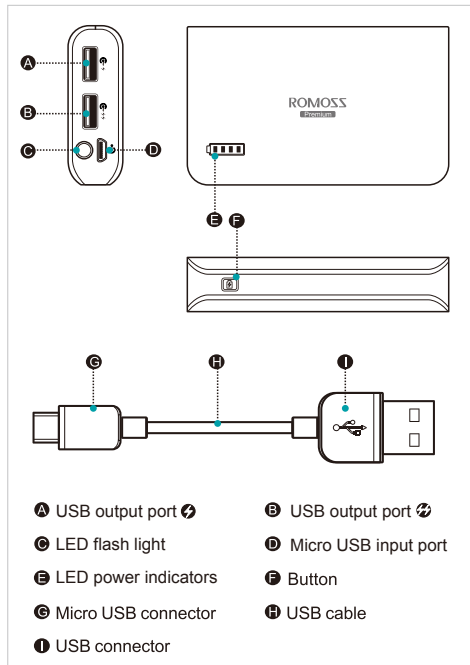
Product features

- Takes only 4.9 hours to charge itself, just half of that for ordinary products
- Plug and charge on any smartphone
- Charge and use, devices are fully charged before you go out
- Can charge both smartphone and iPad
- Unique and luxury craftsmanship
- Intelligent multi-level protection ensures safety and reliability
- Highly efficient voltage booster circuit, actual power output is 10% higher than ordinary products
- Alloy-plastic structure ensures ruggedness
- Smart sleep mode helps save power and prolongs endurance

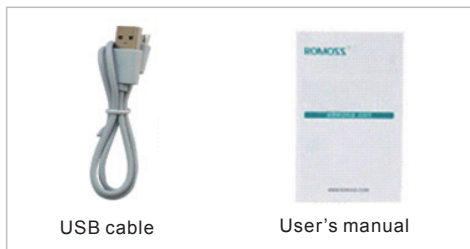
Specifications

Name	sailing 3	Model	PH30
Capacity	7800mAh	Weight	~193g/6.8ozs
Input	DC5V 2.1A MAX.		
Output	⚡ DC5V 1A MAX. ⚡ DC5V 2.1A MAX.		
Size	~L101x W61 x H21mm	~L3.98 x W2.4 x H0.83inches	
Charging time	~5 hours (using 2.1AAC adapter) ~10.5 hours (using 1AAC adapter) ~20.5 hours (using 500mA AC adapter or PC USB)		
Environment for Use	Outdoors/indoors/inside a vehicle		
Ambient Temperature for Use	Charging 0°C~45°C; discharging -10°C~60°C		
Environment for Storage	-20°C~60°C		
The electrical core will have 85% capacity left after 300 cycles. (From fully charged to fully discharged is a cycle)			

product appearance



Accessories



1 Charge sailing 3 with AC adapter (AC adapter is not bundled)

2 Charge sailing 3 by connecting it to USB port on computer

3 Charging digital products using sailing 3

Residual capacity indicator

LED Signal	Battery Percentage
1st signal lights up	0-25%
1st, 2nd signals light up	25-50%
1st, 2nd, 3rd signals light up	50-75%
1st, 2nd, 3rd and 4th signals light up	75-100%

sailing 3

High-performance External Battery

Support to most DC5V USB input smartphones, tablets, MP3, MP4 and other digital products charging.

! Thank you for using ROMOSS products. Please read the instructions carefully before using the product. Follow the instructions and use it properly.

Instructions

Charging sailing 3 (Figure 1 / Figure 2)

1. Use original USB data cable and connect micro USB to micro USB port on sailing 3;
2. Connect USB cable to USB port on DC5V USB charger or computer. If LED signal flickers, it means sailing 3 is being charged;

! Please pull out power supply after recharging fully.

Charging digital product with sailing 3 (Figure 3)

1. Check if the charging voltage of the digital product is compatible with the DC5V output voltage of sailing 3.
2. Use the digital product's original cable, and connect one end to the digital product, the other end to sailing 3. If battery signal (output signal) lights up, it means the charging process starts. When the signal (output signal) goes out, it means the digital product is fully charged.

Flashlight function

- Press the switch for 2-3 seconds to turn on the LED flashlight and another 2-3 seconds to turn it off.

!

1. When switching off, LED signal will go out in 5 seconds and the battery will enter sleep mode in about 1 minute. If users want to use the battery to charge digital products, please switch on to wake it up.
2. When switching off, the 1st signal (output signal) will flicker if the power is less than 5% to prompt users that the battery itself needs to be charged.